



DARLASTON ROAD, SW19

£650,000

- Two bedroom
- Two bathroom
- Gated development
- Under ground parking
- Communal grounds
- Energy rating: c

@marshandparsons
marshandparsons.co.uk

MARSH &
PARSONS

ABOUT THE PROPERTY

This spacious, purpose built apartment features two double bedrooms and is located within a private gated development on the slopes of Wimbledon.

Brunswick Court provides easy access to Wimbledon Common and Wimbledon Village. Frequent bus services connect to the Wimbledon town central shopping district and recreational facilities, as well as the mainline and District line station with direct access into the Capital. The area is well known for its excellent selection of state and independent schools.





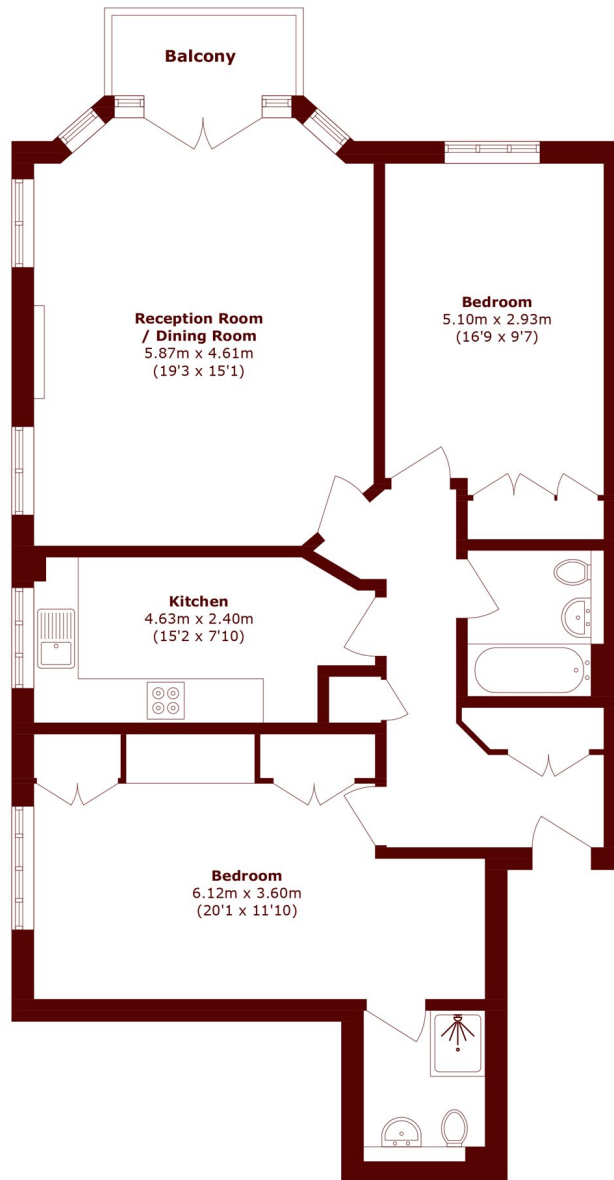


FURTHER DETAILS

This first floor apartment offers a large principal bedroom with ample wardrobe space, an en suite shower room, a second generous double bedroom, a family bathroom, a separate fully fitted kitchen and a large double aspect reception room with a balcony. Further benefits include access to communal gardens, a communal lift and allocated underground parking.



STEP INSIDE DARLASTON ROAD



Total area (approx.): 89.9 sq. m (967.6 sq. ft)

Balcony area (approx.): 2.8 sq. m (30.1 sq. ft)

Wimbledon
020 8879 6660

Energy Rating: C We aim to make our particulars both accurate and reliable. However, they are not guaranteed; nor do they form part of an offer or contract. If you require clarification on any points then please contact us, especially if you're traveling some distance to view. Please note that appliances and heating systems have not been tested and therefore no warranties can be given as to their good working order

**MARSH &
PARSONS**