



17 Princes Way, Bletchley MK2 2FB

£92,800 - 58% Share

NICOLA LANGFORD

exp[®] UK

@ nicola.langford@exp.uk.com

🌐 nicolalangford.exp.uk.com

📞 07396 394 255

17 Princes Way, Bletchley MK2 2FB

Located on Princes Way in the heart of Bletchley, this generously sized one-bedroom first floor apartment is offered on a 58% shared ownership basis with Peabody Housing Association, making it an ideal option for first-time buyers or those looking for an affordable and well-connected home.

The accommodation is well laid out and includes a large double bedroom with built-in wardrobes and a Juliet balcony, creating a bright and airy feel. The open-plan kitchen/living area offers a versatile space suited to both everyday living and entertaining, while the bathroom is conveniently positioned off the main hallway.

Further benefits include allocated parking and a highly convenient location, within easy reach of local shops, amenities, and Bletchley train station, providing excellent commuter links.

Financially, the property remains very accessible, with a monthly rent of £149.52 and a service charge of £138.39, making it a manageable and attractive option for buyers.

This is a great opportunity to secure a well-located home with strong potential – early viewing is recommended.

For all enquiries please quote property reference NL1208





Kitchen

3.2m x 2.26m (10'6" x 7'5")

Fitted with a range of high and low level units with work surfaces over. Stainless steel sink with mixer tap and drainer. Space for cooker and fridge. Open plan to lounge/dining area

Lounge

4.29m x 2.39m (14'1" x 7'10")

Open plan to the kitchen, with carpeted flooring and a rear-facing window providing natural light.

Bedroom

4.37m x 2.79m (14'4" x 9'2")

Generous bedroom currently arranged as two separate areas with a non-permanent partition, offering flexibility of use. Benefits from a Juliet balcony to the rear and built-in wardrobe.

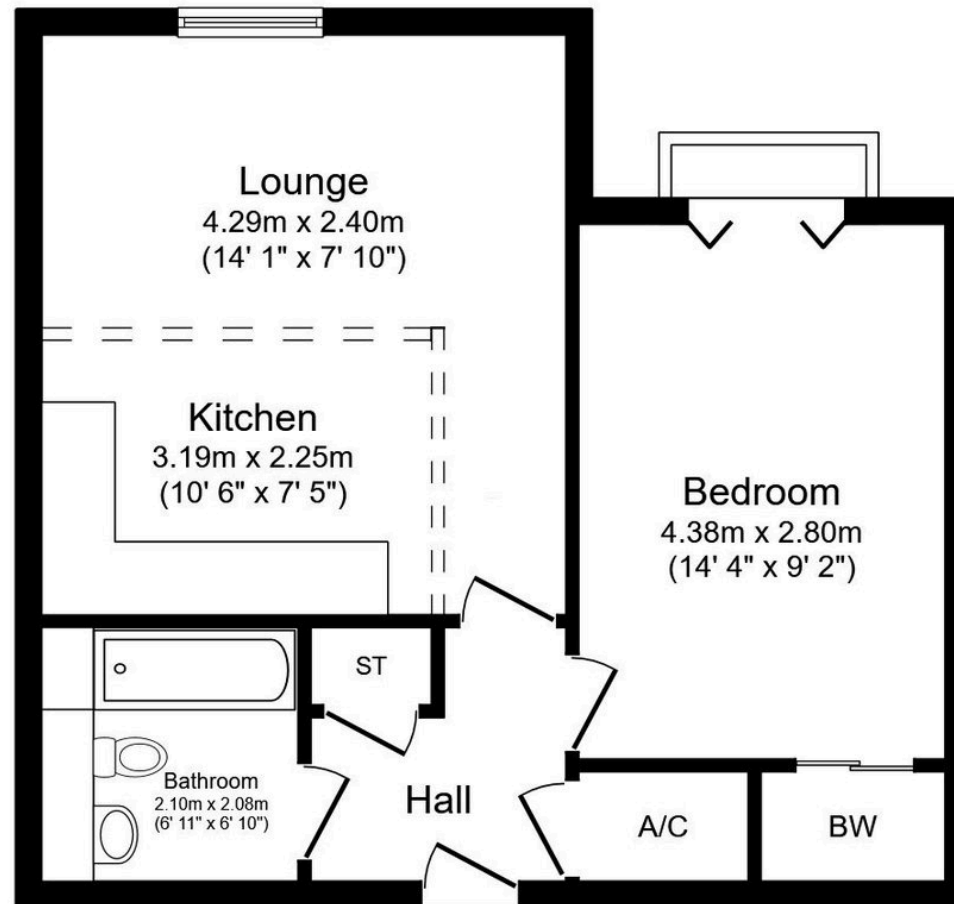


Bathroom

2.11m x 2.08m (6'11" x 6'10")

Neutral white suite including bath with shower over, low-level WC and wash hand basin.





Floor Plan

Floor area 46.4 sq.m. (500 sq.ft.)

Total floor area: 46.4 sq.m. (500 sq.ft.)

This floor plan is for illustrative purposes only. It is not drawn to scale. Any measurements, floor areas (including any total floor area), openings and orientations are approximate. No details are guaranteed, they cannot be relied upon for any purpose and do not form any part of any agreement. No liability is taken for any error, omission or misstatement. A party must rely upon its own inspection(s). Powered by www.Propertybox.io