

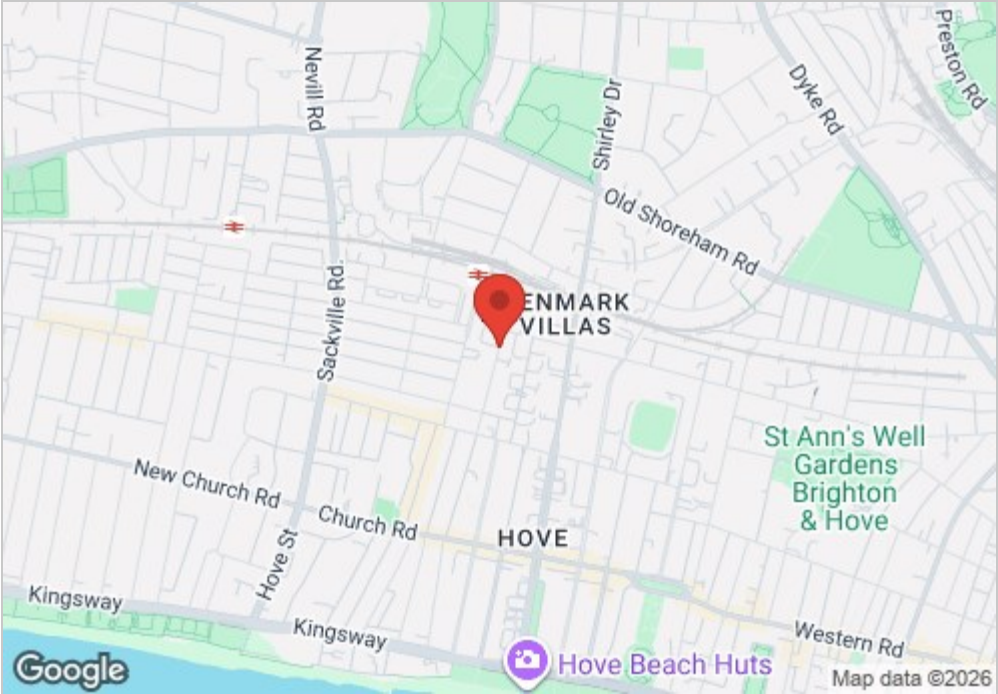
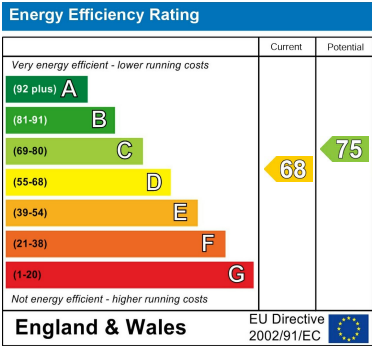
38 Denmark Villas

Hove, BN3 3TE

Offers in excess of £350,000

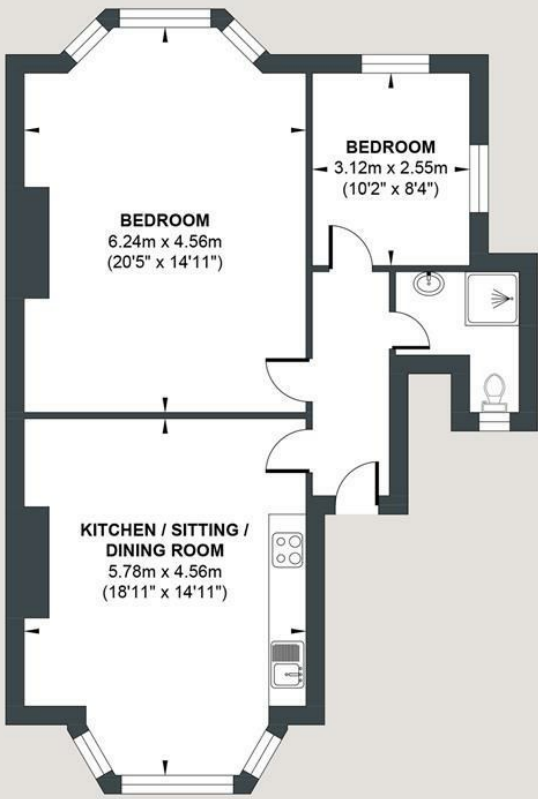
An immaculately presented 2 bedroom apartment boasting a wealth of period features including bay windows and high ceilings throughout. The property is positioned on the raised ground floor of this attractive period building and has had a recent renovation including a new kitchen (with appliances) and fully tiled bathroom. Denmark Villas is a popular area for commuters, located just minutes from Hove mainline railway station with direct links to Gatwick Airport and central London. Local amenities can be found within walking distance on Blatchington Road and Church Road whilst Hove seafront is also just a short distance from the property.

- Two bedroom apartment
- Close to station
- Newly refurbished
- Bathroom
- Raised ground floor
- Close to amenities
- No onward chain
- Kitchen lounge



DENMARK VILLAS

Approx. Gross Internal Floor Area = 68.52 sq m / 737.54 sq ft
Illustration for identification purposes only, measurements are approximate, not to scale.



GROUND FLOOR

Approximate Floor Area
737.54 sq ft
(68.52 sq m)

