



South Hill Park

London, NW3

£3,792 per month
(£875.08 per week)

Penthouse on the 3rd floor of this period building boasting amazing views across London and Hampstead Heath pond, wood floors throughout, air conditioning, Luton lighting and satellite/cable TV.

CHESTERTONS



South Hill Park

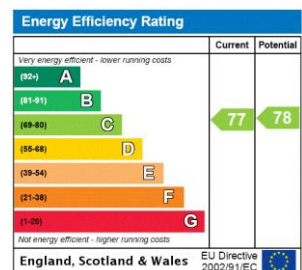
London, NW3

- 3rd Floor Penthouse Apartment
- 1 Bedroom, 1 Bathroom, Reception, Kitchen
- Excellent Views Across to Hampstead Heath Pond, Wood Floors Throughout, Cable TV, Satellite
- Situated in Premier Road in South End Green



Penthouse on the 3rd floor of this period building boasting amazing views across London and Hampstead Heath pond, wood floors throughout, air conditioning, Luton lighting and satellite/cable TV. The property is situated in this excellent location in South End Green, walking distance to the shops and amenities and Hampstead Heath Overground. Accommodation comprises spacious reception room, fully fitted kitchen, double bedroom with fitted wardrobes, bathroom.

Minimum Term: 12 months
Deposit Required: £4,375.38
Local Authority: London Borough Of Camden
Council Tax Band: E
EPC Rating: C
Unfurnished



Chestertons Hampstead Lettings

55-56 Hampstead High Street
 Hampstead
 London
 NW3 1QH
 hampsteadlettingsusers@chestertons.co.uk
 02077941125
 chestertons.co.uk

Additional tenant charges apply (fees apply to non-AST tenancies only)
 Tenancy Agreement Fee: £300
 References per Tenant/Guarantor: £60
 Inventory check (approx. £100 – £250 inc. VAT)
 chestertons.co.uk/property-to-rent/applicable-fees

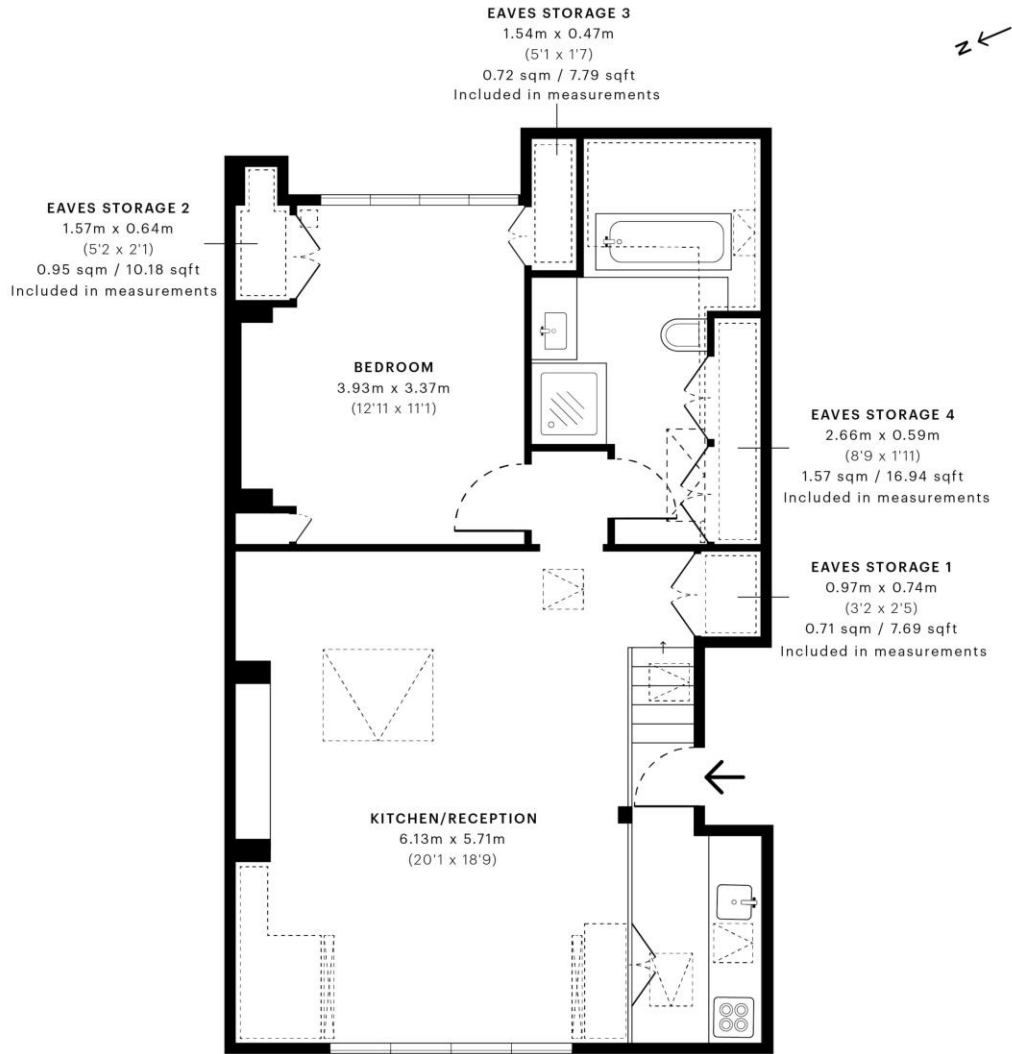


South Hill Park, NW3

CAPTURE DATE 17/01/2023 LASER-SCAN POINTS 33,857,306

GROSS INTERNAL AREA

59.49 sqm / 640.35 sqft



— Third Floor



Spec Verified floor plans are produced in accordance with Royal Institution of Chartered Surveyors' Property Measurement Standards. Plots and gardens are illustrative only and excluded from all area calculations. Due to rounding, numbers may not add up precisely. All measurements shown for the individual room lengths and widths are the maximum points of measurements captured in the scan.

#M6 28 RESIDENTIAL 58.08 sqm / 624.62 sqft
#M6 30 RESIDENTIAL 57.72 sqm / 621.38 sqft

SPEC ID 563c532cc1f7e710dfb63ad39

