



## Thames Close, TW12

£395,000

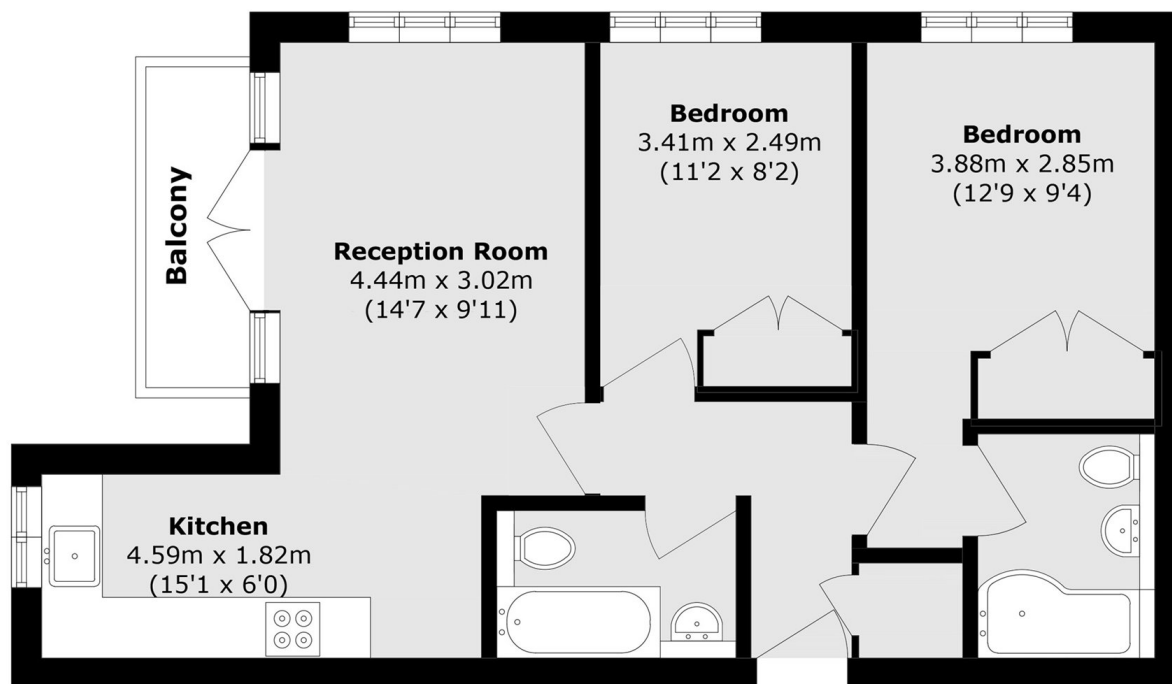
Ideally positioned within a gated riverside development is this lovely first floor two double bedroom, two bathroom apartment. The property also comes with underground parking, a share of freehold, no onward chain and a private balcony.

Located by the River Thames, this enviable location is a short walk to the village where you will find independent cafés and restaurants and the train station with its direct links into London Waterloo.

### Features

- Riverside Development
- Two Double Bedrooms
- En Suite
- Underground Parking
- Balcony
- Share Of Freehold

# Thames Close, Hampton, TW12



Total area (approx.): 57.1 sq. m (614.6 sq. ft)  
Balcony area (approx.): 3.2 sq. m (34.4 sq. ft)