



Town • Country • Coast



Cornwall Street
Bere Alston, Yelverton

Offers In Excess Of £170,000



Cornwall Street

Bere Alston, Yelverton

Nestled in the popular village of Bere Alston is this delightful end terrace cottage that is perfect for first time buyers or those looking for investment, with two double bedrooms, a large bathroom, utility room and generous garden.

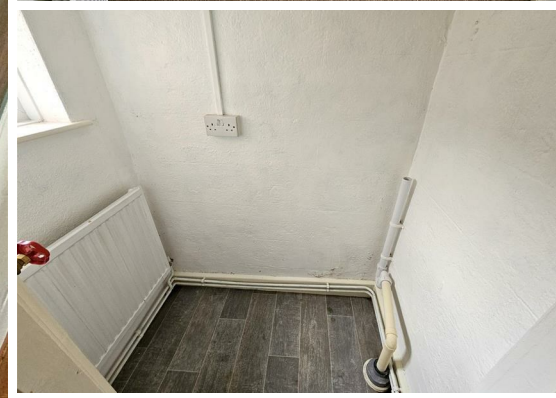
You enter the property into the bright Living Room with a focal multi-fuel stove, ideal for providing warmth in the winter months. The kitchen has a range of wall and base units and original flag stone flooring with stairs to the first floor leading from here. A door leads to the rear hall with access to the garden and a door to the generous bathroom with bath and shower over, low level WC and basin. Off the bathroom is a small room with space and plumbing for a washing machine.

Upstairs are two double bedrooms, the main boasting built in wardrobes.

The property enjoys a good-sized garden, large patio with steps leading down to a generous lawn offering a private outdoor space for gardening, play, or simply enjoying the fresh air. It is a perfect spot for summer barbecues or quiet evenings under the stars.

Located in a popular village with a strong sense of community and easy access to local amenities.

Whether you are a first-time buyer, searching for an investment opportunity or looking to downsize, this property offers an opportunity to embrace village life in a charming setting.





Living Room

13'9" x 13'3" (4.20 x 4.04)

Kitchen

12'6" x 8'0" (irregular shape) (3.82 x 2.46 (irregular shape))

Rear Hall

Bathroom

9'10" x 7'4" (3.01 x 2.24)

Utility Room

4'7" x 2'11" (1.40 x 0.89)

Bedroom 1

12'8" x 12'5" (3.88 x 3.79)

Bedroom 2

9'1" x 8'0" (2.79 x 2.45)

Tenure

Freehold

Services

Mains gas, electricity, drainage and water.

EPC

D/68

Council Tax Band

B

Situation

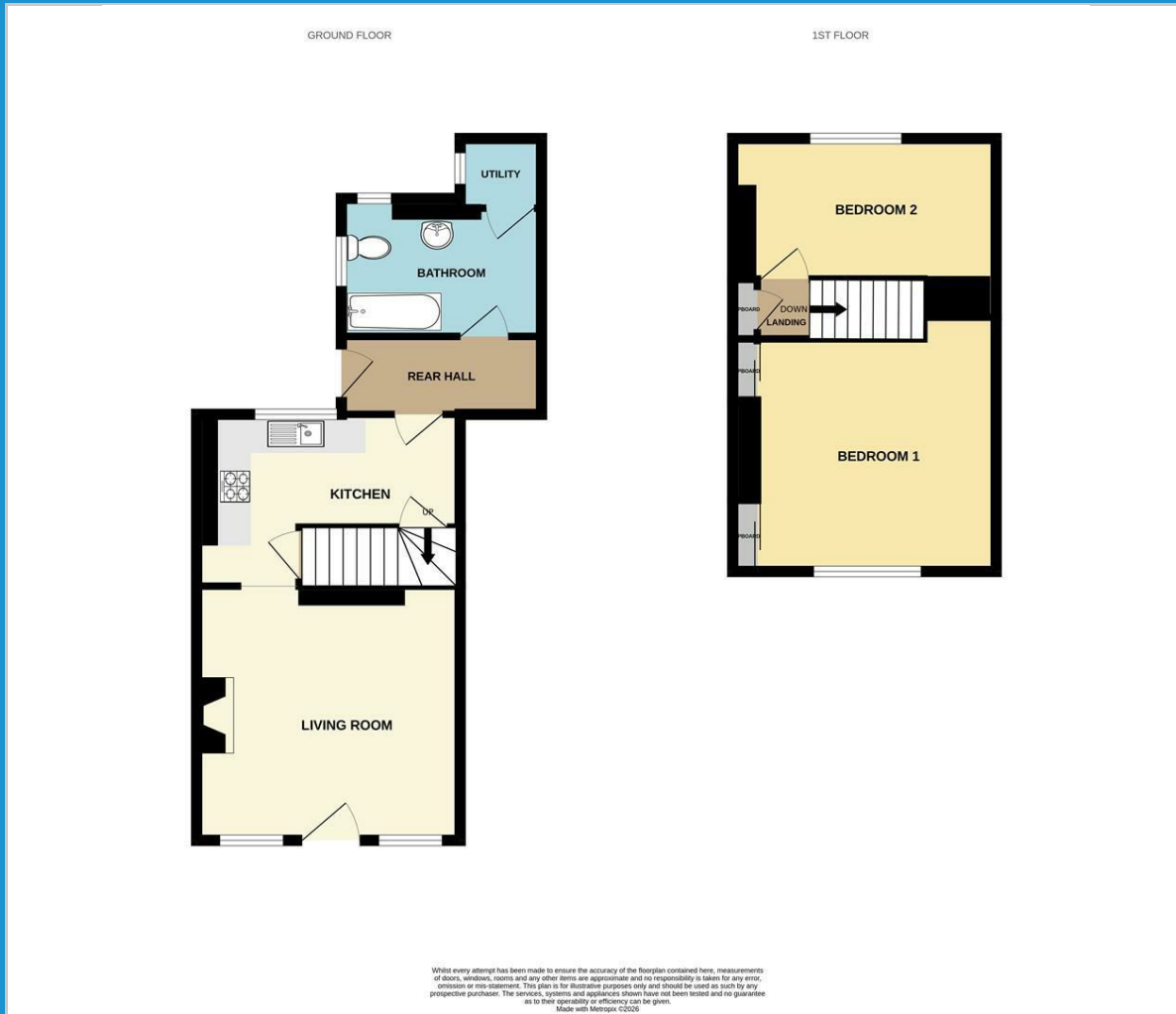
Bere Alston is a thriving village with the atmosphere and facilities of a small town. It has several shops including two convenience stores, a Post Office and bakery, a butcher's, a hairdresser and a pharmacy. There is also a primary school and health centre, plus a pub and takeaway. The village is situated in beautiful countryside within the Tamar Valley Area of Outstanding Natural Beauty. There are many footpaths radiating all around and there are also boatyards at nearby Weir Quay and Bere Ferrers on the River Tamar, making it an ideal location for those who enjoy the outdoor life. There are excellent public transport links, including regular buses to Tavistock, just six miles away, and a railway station on the scenic Tamar Valley Line giving access to Plymouth within 20 minutes.

Directions

As you enter the village of Bere Alston, follow the road down to the T-junction in the village centre and turn left onto Fore Street. Then take the first right into Cornwall Street, proceed down this road and the property will be found on the left hand side.



Floor Plan



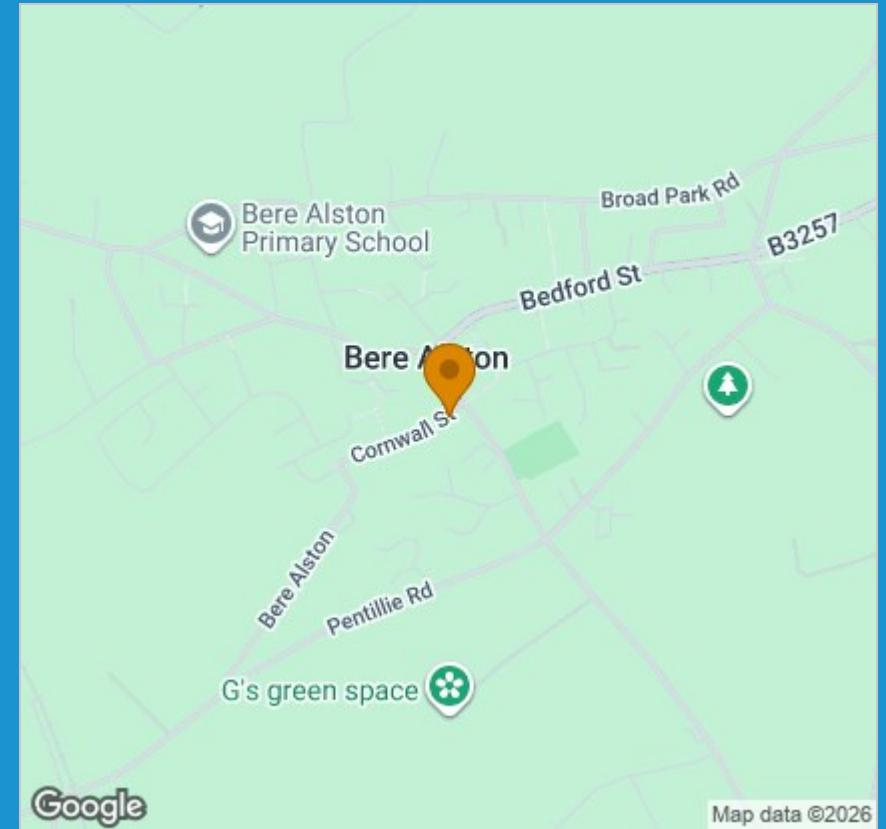
Viewing

Please contact our View Property Tavistock Office on 01822 614614 if you wish to arrange a viewing appointment for this property or require further information.

These particulars, whilst believed to be accurate are set out as a general outline only for guidance and do not constitute any part of an offer or contract. Intending purchasers should not rely on them as statements of representation of fact, but must satisfy themselves by inspection or otherwise as to their accuracy. No person in this firm's employment has the authority to make or give any representation or warranty in respect of the property.

Unit 1, The Old Dairy Paddons Row, Tavistock, Devon, PL19 0HF
 Tel: 01822 614614 Email: Tavy@viewproperty.org.uk www.viewproperty.org.uk

Area Map



Energy Efficiency Graph

