



BURLINGTON ROAD, W4

£550,000

One bedroom
High ceilings
Large cellar
Communal gardens
Allocated parking
Energy rating: d

@marshandparsons
marshandparsons.co.uk

MARSH &
PARSONS



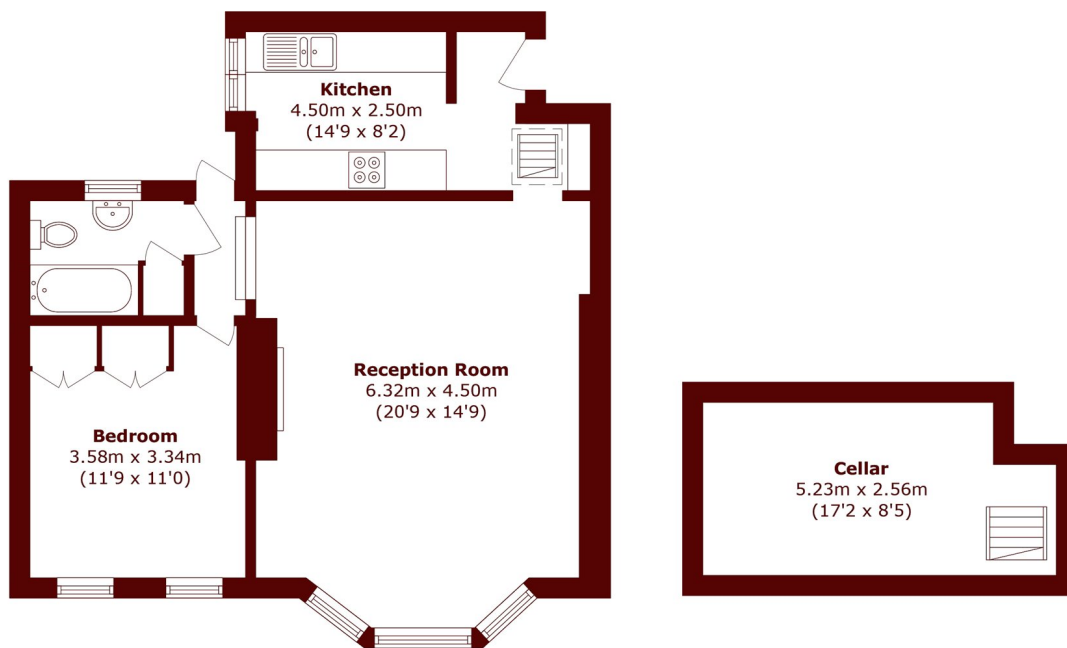
ABOUT THE PROPERTY

Set in this grand Victorian building, this one bedroom ground-floor period conversion is full of charm and character. It features high ceilings, decorative cornices, a large cellar, Dual entrances, a communal garden, allocated parking and a Share of the freehold.

Burlington Road is within walking distance of Chiswick High Road which has an array of Boutique shops, Restaurants, Bars and Superstores. It has excellent transport links, including Gunnersbury station (District Line & Overground) and Chiswick Park (District Line).



STEP INSIDE BURLINGTON ROAD



Ground Floor

Cellar

Total area (approx.): 71.8 sq. m (772.8 sq. ft)
(Including Cellar)

Chiswick
020 8994 2556

Energy Rating: D We aim to make our particulars both accurate and reliable. However, they are not guaranteed; nor do they form part of an offer or contract. If you require clarification on any points then please contact us, especially if you're traveling some distance to view. Please note that appliances and heating systems have not been tested and therefore no warranties can be given as to their good working order

**MARSH &
PARSONS**