

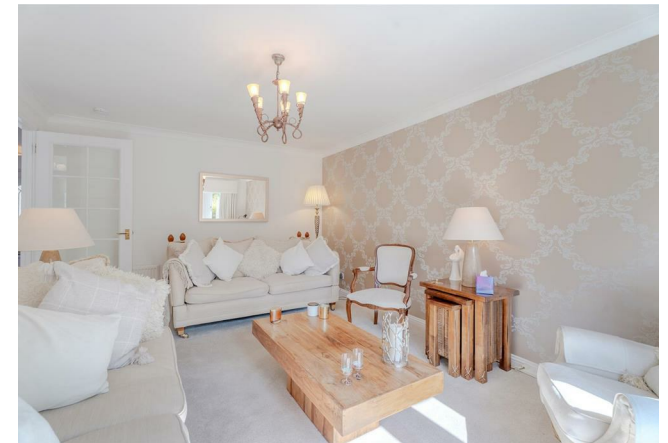


OFFERS OVER
£330,000
Imlach Place
Motherwell, ML1 3FD



TOTAL: 1509 sq. ft, 141 m²
 Ground floor: 802 sq. ft, 75 m², 1st floor: 707 sq. ft, 66 m²
 EXCLUDED AREAS: PATIO: 38 sq. ft, 4 m², WALLS: 133 sq. ft, 12 m²

Floor Plan Created By Cubic8 App. Measurements Deemed Highly Reliable But Not Guaranteed.



Energy Efficiency Rating		Current	Potential
Very energy efficient - lower running costs			
(92 plus)	A		
(81-91)	B		
(69-80)	C		
(55-68)	D		
(39-54)	E		
(21-38)	F		
(1-20)	G		
Not energy efficient - higher running costs			
Scotland		76	80
		EU Directive 2002/91/EC	

Agents Note: Whilst every care has been taken to prepare these particulars, they are for guidance purposes only. All measurements are approximate and are for general guidance purposes only and whilst every care has been taken to ensure their accuracy, they should not be relied upon and potential buyers/tenants are advised to recheck the measurements



HEMMINGS HOMES

OFFICE ADDRESS

376 Brandon Street
 Motherwell
 North Lanarkshire
 ML1 1XA

OFFICE DETAILS

01698 263413
 enquiries@hemmingshomes.co.uk
 hemmingshomes.co.uk