



FIELDHOUSE

T: +44 (0)20 7013 0770
F: +44 (0)20 7731 1964
PROPERTY@FHRES.CO.UK
FHRES.CO.UK



Flat 7, 23-25 Islington High Street, Islington, London, N1 9LQ

BRAND NEW TOP FLOOR TWO BEDROOM APARTMENT IDEALLY LOCATED IN ISLINGTON TOWN CENTRE. This beautifully presented, unfurnished apartment is finished to a high standard throughout. Available April 2026!

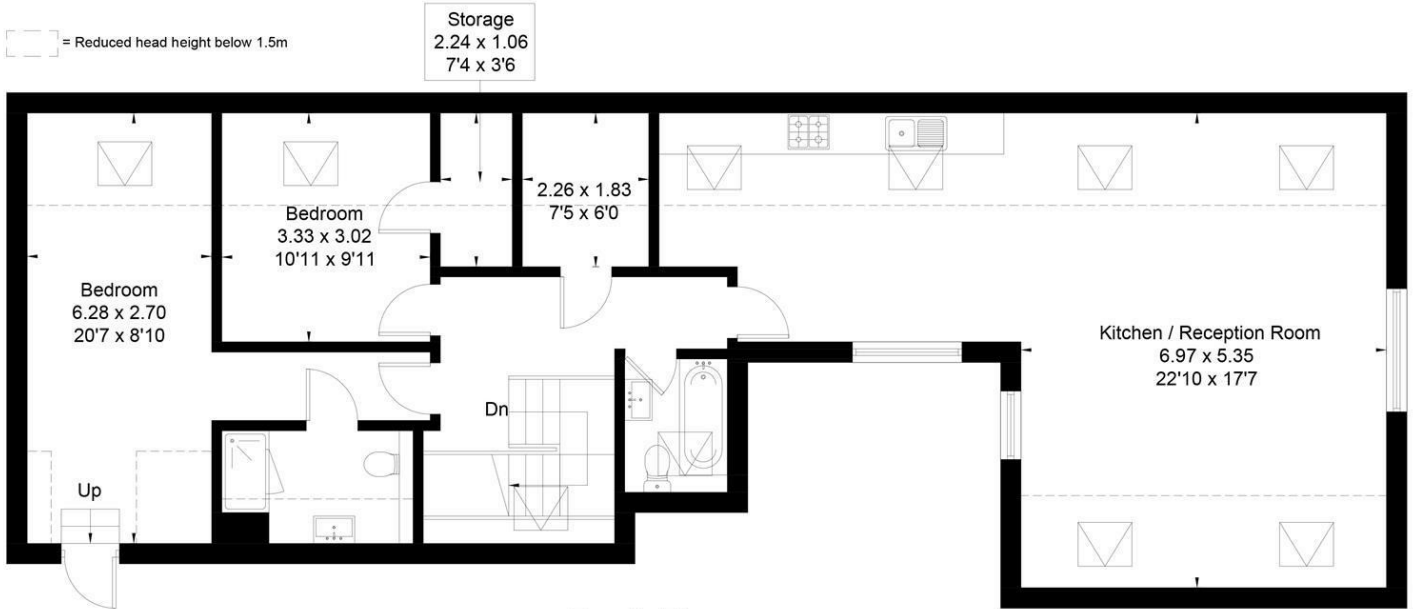
This apartment comprises of stairs leading to open plan kitchen and living room, master bedroom with en-suite shower room, second double bedroom and bathroom with shower over bath. This property also benefits from gas central heating. Available May 2026!

Minimum Length of Tenancy: 12 Months
Council Tax: Islington Borough Council
Council Tax Band: TBC

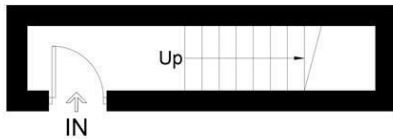
- BRAND NEW
- TOP FLOOR
- OPEN PLAN KITCHEN AND LIVING ROOM
- TWO DOUBLE BEDROOMS
- EN-SUITE SHOWER ROOM
- BATHROOM
- CENTRAL LOCATION
- AVAILABLE APRIL 2026

£4,117 PCM*

Approximate Floor Area = 118.8 sq m / 1279 sq ft



Fourth Floor



Third Floor



This floor plan has been drawn in accordance with RICS Property Measurement 2nd edition.
All measurements, including the floor area, are approximate and for illustrative purposes only. @fourwalls-group.com #106639

Energy Efficiency Rating		Current	Potential
Very energy efficient - lower running costs			
(92 plus) A			
(81-91) B			
(69-80) C			
(55-68) D		74	74
(39-54) E			
(21-38) F			
(1-20) G			
Not energy efficient - higher running costs			
England & Wales		EU Directive 2002/91/EC	

Environmental Impact (CO ₂) Rating		Current	Potential
Very environmentally friendly - lower CO ₂ emissions			
(92 plus) A			
(81-91) B			
(69-80) C			
(55-68) D			
(39-54) E			
(21-38) F			
(1-20) G			
Not environmentally friendly - higher CO ₂ emissions			
England & Wales		EU Directive 2002/91/EC	



FIELDHOUSE RESIDENTIAL LIMITED

Registered Address: 94 Wandsworth Bridge Road, London SW6 2TF
Registered in England No. 5097508 VAT No. GB 839 5267 87

