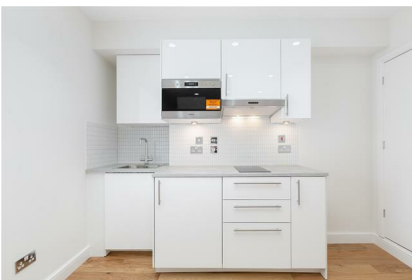


# Parkheath

*Sold on Service*

**Christchurch Avenue NW6**  
**£1,250 PCM (£288 per week) - Brent Band A**

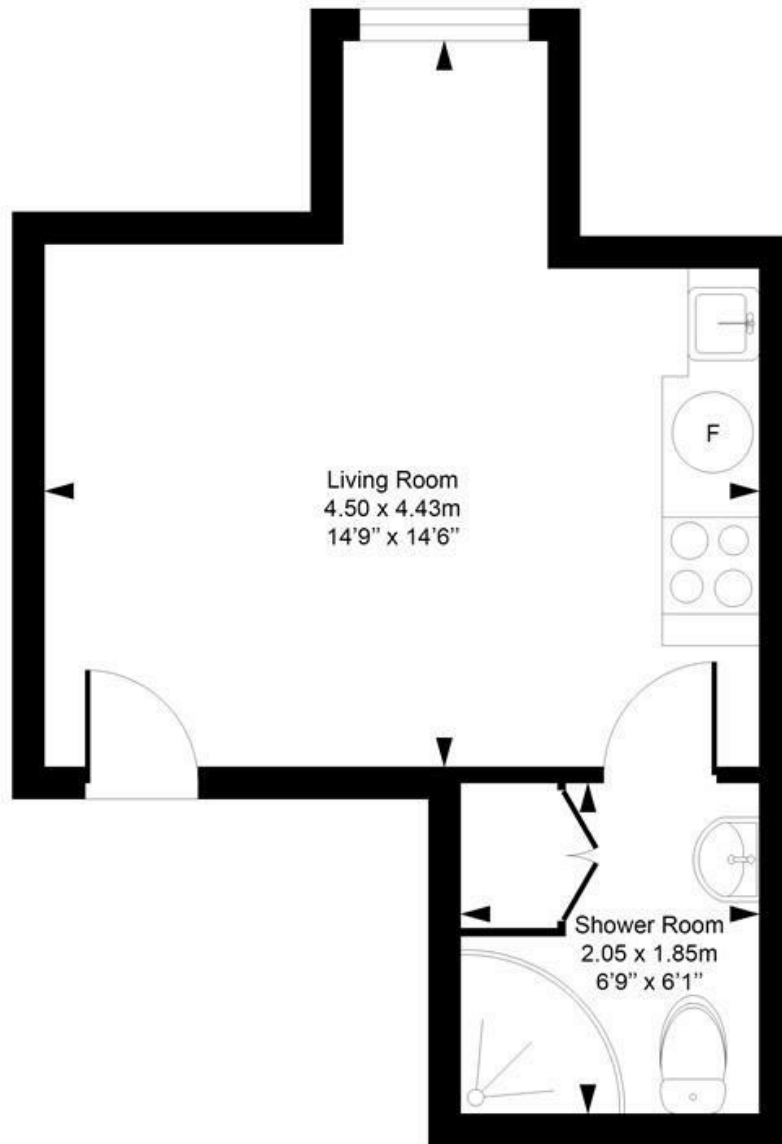


Studio apartment within period conversion  
En-suite shower room with storage  
Studio room with open plan kitchen  
6 minute walk to Brondesbury overground

Rent inclusive of heating and hot water  
Wood flooring  
3 minute walk to Kilburn underground  
EPC: Rating C, Council Tax: Camden band A

West Hampstead Office 020 7794 7111

**Christchurch Avenue**  
Approximate Gross Internal Area = 19.7 Sq m / 212 sq ft



This plan is for layout guidance only. Drawn in accordance with RICS guidelines. Not drawn to scale unless stated. Windows & door openings are approximate. Whilst every care is taken in the preparation of this plan, please check all dimensions, shapes & compass bearings before marking any decisions reliant upon them.

ELLIE CLAIRE PHOTOGRAPHY LTD  
[www.ellieclairephotography.com](http://www.ellieclairephotography.com)

The particulars do not constitute part of an offer or contract. The particulars, including text, photographs and plans, are for the guidance only of prospective purchasers/tenants and must not be relied upon as statements of fact. The descriptions provided therein represent the opinion of the author and whilst given in good faith should not be construed as statements of fact. Nothing in these particulars shall be deemed a statement that the property is in good condition or otherwise or that any services or facilities are in good working order. All measurements are approximate