

A modern bedroom with a light wood bed frame and white bedding. A large wardrobe with full-length mirrors is on the left. A fireplace with a dark wood surround and a tiled hearth is on the right, with a large TV mounted above it. The room has light wood flooring, white walls, and recessed ceiling lights.

Kings Avenue
Loughborough

1 Bed Room In A Shared House • LE11 5HY • £800 pcm • £920 Deposit



Kings Avenue, Loughborough

Suitable for couples, a contemporary double BEDROOM in a shared house with 4K TV. STYLISH kitchen, maintained GARDEN. Kitchen & Lounge. Fully FURNISHED to a high standard. DRIVEWAY parking. All the kitchen APPLIANCES included. BILLS and WIFI included. Just a short walk to the town.

Lounge / Diner

The hub of the home with smart wood flooring, modern decor and large 4K flat screen TV. French doors to the Kitchen keeps the home social. French doors to the garden.

Kitchen

Situated to the rear of the property on the ground floor, a practical kitchen with access to the rear garden. A washing machine, dryer, oven and hob are included with utensils and crockery stored in the cupboards. Two large fridge freezers are located in the diner.

The Bedroom

Situated at the front of the property on the ground floor, a sizeable double bedroom with all furniture and 4K TV pictured included. Lockable bedroom door.

Bathroom

A contemporary four piece washroom including a corner bath, walk-in-shower, sink and toilet. Situated on the first floor overlooking the rear garden.

Garden

A sizeable garden area to the rear with access along the side of the house. Sorry, the garage is locked for landlord's use.

Parking

Driveway parking available with further parking available without restriction on Kings Avenue.

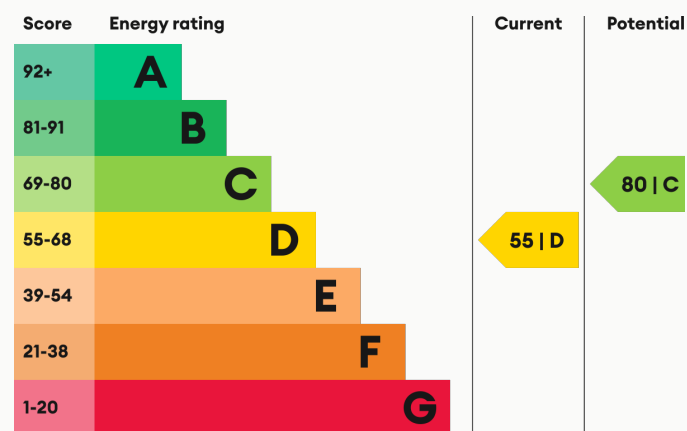
Heating

Gas-fired central heating.

Glazing

Modern, good quality, uPVC double glazing.

Energy Performance



We aim to make our particulars both accurate and reliable. However they are not guaranteed; nor do they form part of an offer or contract. If you require clarification on any points then please contact us, especially if you are traveling some distance to view. All measurements are to widest point.



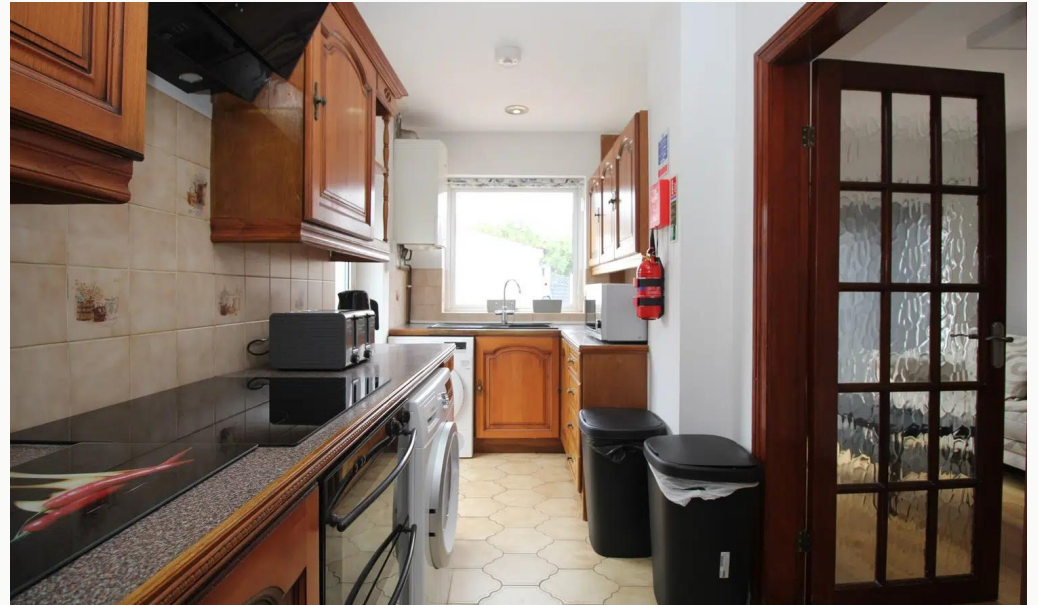
Bedroom



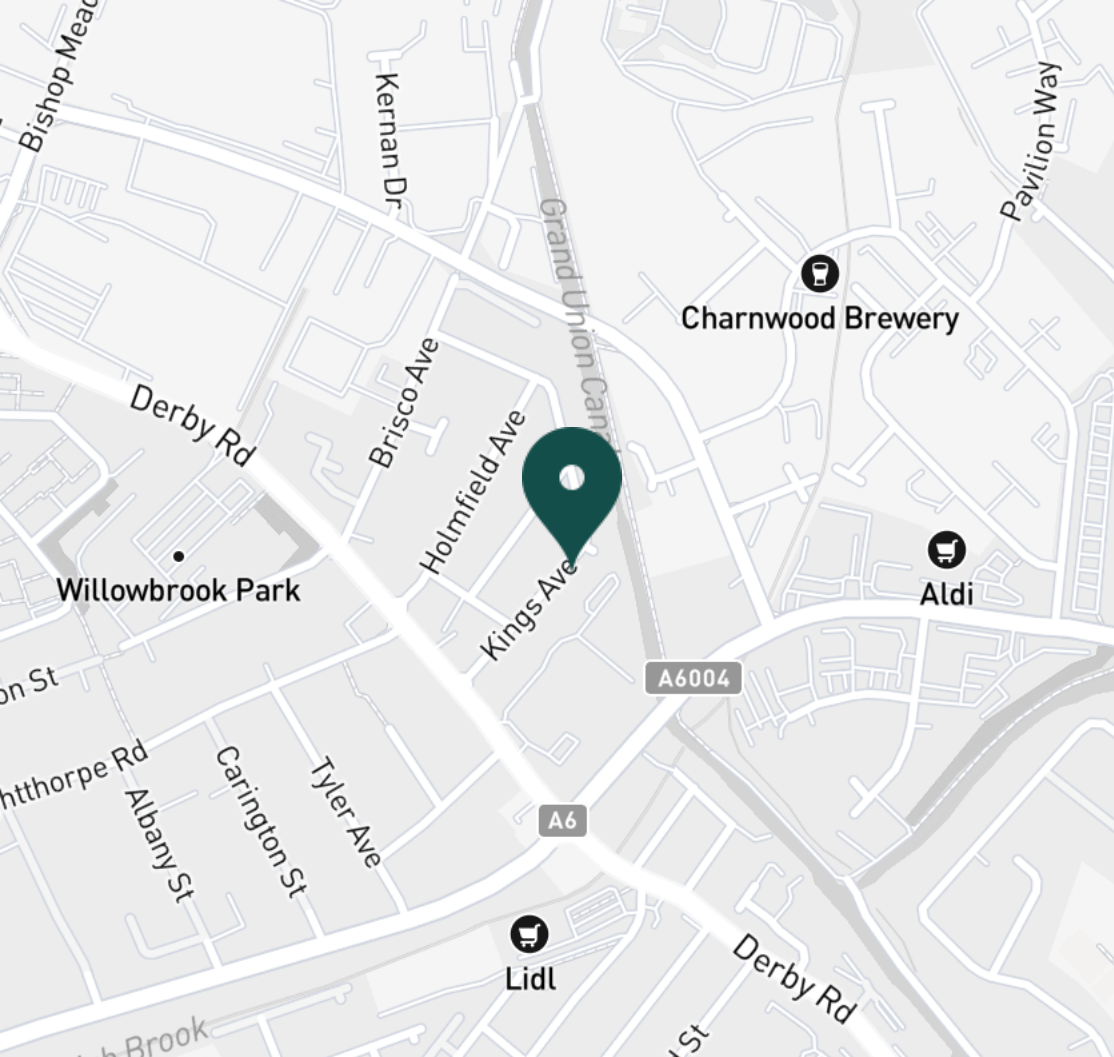
Bedroom



Kitchen



Kitchen



SUPERMARKETS

Lidl Loughborough	0.3 mi
Aldi Loughborough	0.6 mi
Tesco Superstore Loughborough	0.7 mi
Marks & Spencer	0.8 mi
Sainsburys Loughborough	0.9 mi

GYMS

Anytime Fitness Loughborough	0.6 mi
PureGym Loughborough	0.8 mi
Dynamite Gym Ltd	0.9 mi
CrossFit Loughborough	1.1 mi
Loughborough University Pool	1.3 mi

TRAIN STATIONS

Loughborough	1.4 mi
Barrow upon Soar	4.6 mi
Sileby	6.4 mi
East Midlands Parkway	9.4 mi
Syston	10.7 mi

NURSERY SCHOOLS

Busy Bees in Loughborough	0.7 mi
Babblebrooke Day Nursery	0.7 mi
Robert Bakewell Playgroup	0.7 mi
Kingscliffe Day Nursery	0.8 mi
Small World Nursery	0.9 mi

PRIMARY SCHOOLS

St Marys Catholic PS	0.8 mi
Robert Bakewell PS	0.8 mi
Rendell Primary School	1.1 mi
Loughborough CE PS	1.1 mi
Thorpe Acre Junior Sch	1.2 mi

HIGH SCHOOLS

Limehurst Academy	0.8 mi
RNIB College Loughborough	1.0 mi
The Garendon High Sch	1.3 mi
De Lisle Catholic Science C	1.3 mi
Loughborough College	1.4 mi

Discover
Loughborough



- ✓ Room in Shared House
- ✓ Bills & Wi-fi Included
- ✓ Council Tax Included
- ✓ Recently Decorated
- ✓ Fully Furnished
- ✓ Students or Professionals





Kitchen



Lounge / Diner



Lounge / Diner



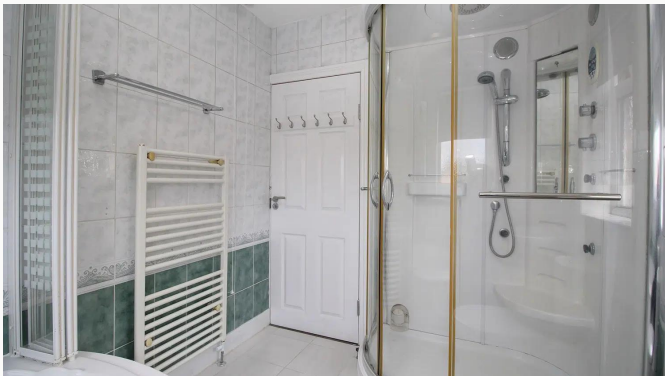
Lounge / Diner



Lounge / Diner



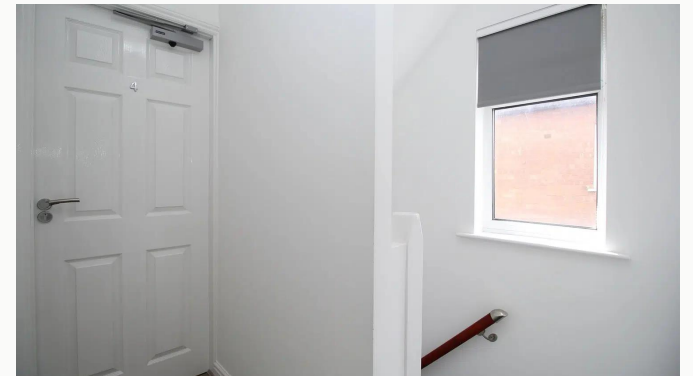
Bathroom



Bathroom



Water Closet



Landing



Hallway



Porch



Garden



Garden



Garden



Garden



Kings Avenue

Available
From 08/06/2026

Comes
Furnished

Bedrooms
1

Receptions
1

Bathrooms
1

Parking
Driveway

Postcode
LE11 5HY

Rent
£800 pcm

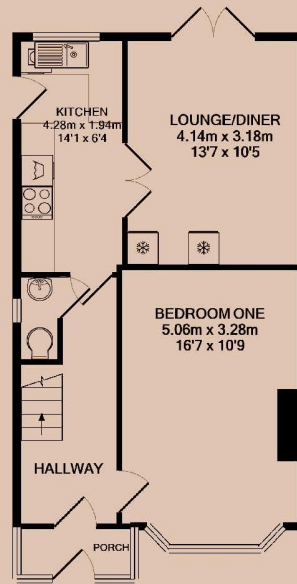
Deposit
£920

EPC
55 | D

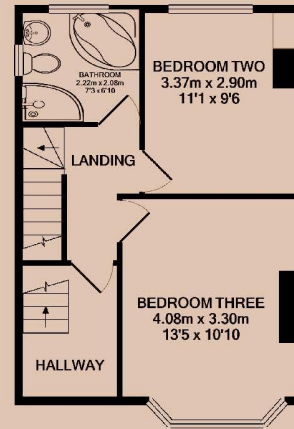
Council Tax Band
B

ID
#11017

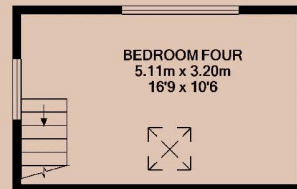
Updated
30/04/2026



GROUND FLOOR



1ST FLOOR



2ND FLOOR

Have a property like this? Let's work together.

Design and marketing are at the heart of our approach. With most people now looking for property online, we can get our clients' properties in front of as many people as the most prominent national agents. Where we differ is in the quality of our work. We create stunning digital particulars that highlight the individual attributes of every property we market, with videos and floor plans as standard.



OUR OFFICE
7 Biggin Street
Loughborough, LE11 1UA

CONTACT US
01509 320 320
let@huntleys.net



Huntleys

