





- Professional Landlord
- White Goods Included
- Pets Considered
- Call For More Information
- New Property
- Two Allocated Parking Bays
- Zero Deposit Option Available
- Long Term Tenancies Available





\* SECOND MONTH RENT FREE \*

ZERO DEPOSIT OPTION AVAILABLE. Jan Forster Estates are delighted to offer this brand new 'Kingsville', located in the new development in Meadow Hill, in Throckley.

Presenting a contemporary three-storey residence, this property provides a versatile layout of 3-4 bedrooms, with the fourth room adaptable as a study or bedroom.

The fully integrated kitchen seamlessly connects with the family and dining areas, creating an ideal space for entertaining, with French doors leading from the family area to the rear garden. Ascending to the first floor, you'll find bedroom one with an ensuite, alongside a family lounge illuminated by a large window. The second floor encompasses two additional bedrooms and a family bathroom.

Meadow Hill lies at the centre of Throckley in Northumberland. Located just 7 miles west of Newcastle city centre, it's the ideal base yet is still within easy reach of the city's shops, bars, restaurants, theatres and museums. Just a short drive to Ponteland (4.2 miles) or Jesmond (8.1 miles) open a further choice of green spaces, riverside walkways, boutiques, cafes and restaurants.

Lomond, on behalf of Lloyds Living, part of Lloyds Banking Group, operates a growing portfolio of more than 3,000 professionally managed homes for rent, improving access to good value, quality, sustainable housing across the UK. Lloyds Living helps to support investment into local communities by building and renting homes that people want, in the places they are needed.

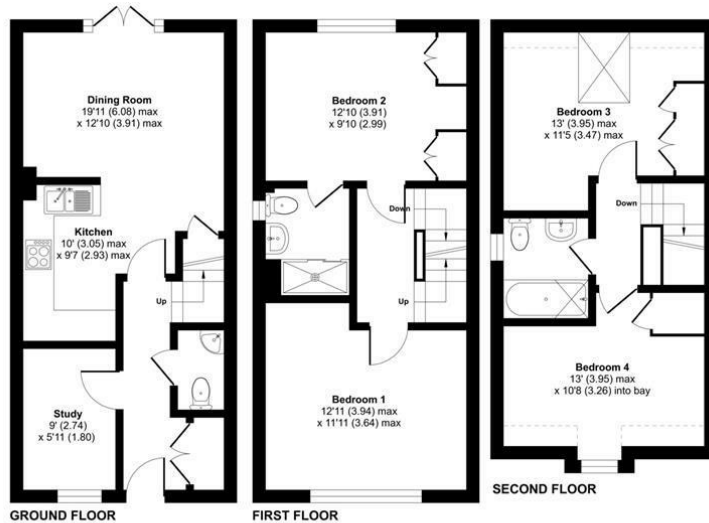
Property features and specifications may vary on a plot-by-plot basis. Whilst every attempt has been made to ensure accuracy, all measurements are approximate and not to scale. Computer-generated images, floor plans, and photos (CGIs) are for illustrative purposes only and may not represent the final design or finish of the property. For further information on layouts and specifications, please speak to your Lloyds Living representative.



Approximate Area = 1069 sq ft / 99.3 sq m  
 Limited Use Area(s) = 23 sq ft / 2.1 sq m  
 Total = 1092 sq ft / 101.4 sq m  
 For identification only - Not to scale



Denotes restricted head height



Floor plan produced in accordance with RICS Property Measurement Standards incorporating International Property Measurement Standards (IPMS2 Residential). © richecom 2025. Produced for Lomond Property (Lettings). REF: 1344661

## The difference between house and home

You may download, store and use the material for your own personal use and research. You may not republish, retransmit, redistribute or otherwise make the material available to any party or make the same available on any website, online service or bulletin board of your own or of any other party or make the same available in hard copy or in any other media without the website owner's express prior written consent. The website owner's copyright must remain on all reproductions of material taken from this website.

[www.janforsterestates.com](http://www.janforsterestates.com)

Should you decide to rent a property, a completed Rental Application Form is required for each adult proposing to rent the property, along with 2 forms of identification, including verification of your Right To Rent in the United Kingdom and a **Holding Deposit Fee equivalent of one week's rent rounded down to the nearest £5.00**. This Holding Deposit will be off-set against the first month's rental payment received.

The Holding Deposit is non-refundable should you fail the Right To Rent checks, you provide misleading information, you withdraw from the property or you fail to take reasonable steps to enter into a tenancy within the agreed timescale. The Holding Deposit does not constitute the offer of acceptance of a tenancy until such time as successful referencing is completed and the Tenancy Agreement is signed and executed by both parties. We will liaise with you to agree on a start date for the tenancy.

Schedule 2 of the Tenant Fees Act 2019 – Treatment of the Holding Deposit – governs how we deal with the Holding Deposit. This Schedule applies where a Holding Deposit is paid to either a Landlord or Letting Agent in respect of a proposed tenancy of housing in England. In this Schedule, 'the deadline for agreement' means the fifteenth day of the period beginning with the day on which the Landlord or Letting Agent receives the Holding Deposit. Unless both parties agree otherwise, this Holding Deposit must be returned to you if it is decided by the Landlord or Letting Agent not to proceed with the tenancy after a Holding Deposit has been paid. The deposit must be returned to you no later than 7 days after a decision is made not to proceed.

Energy Efficiency Rating		
	Current	Potential
Very energy efficient - lower running costs		
(92 plus) <b>A</b>	91	91
(81-91) <b>B</b>		
(69-80) <b>C</b>		
(55-68) <b>D</b>		
(39-54) <b>E</b>		
(21-38) <b>F</b>		
(1-20) <b>G</b>		
Not energy efficient - higher running costs		
<b>England &amp; Wales</b>	EU Directive 2002/91/EC	

Contact Us: 0191 236 2070

