



Guildhouse Street
London, SW1V

CHESTERTONS





Beautiful four double bedrooms, two bathrooms townhouse arranged over three storeys conveniently located for the transport links of Victoria Station. Offered exclusively by Chestertons.

- Spacious 4 bedroom house
- Arranged over 3 floors
- Recently refurbished throughout
- Ample storage space throughout
- Utility room and extra storage vault
- Patio garden

£6,000 pcm

Additional tenant charges apply (fees apply to non-AST tenancies only)

Tenancy Agreement Fee: £300

References per Tenant/Guarantor: £60

Inventory check (approx. £100 – £250 inc. VAT)

chestertons.co.uk/property-to-rent/applicable-fees

Energy Efficiency Rating		Current	Potential
90-100	A		90
81-89	B	78	
69-80	C		
55-68	D		
49-54	E		
35-48	F		
1-34	G		

Not energy efficient - higher running costs

England, Scotland & Wales EU Directive 2002/91/EC

Minimum Term: 12 months
Deposit Required: 6 weeks
Local Authority: Westminster
Council Tax Band: G
EPC Rating: D
Furnished, Part Furnished, Unfurnished

Chestertons Westminster & Pimlico Lettings

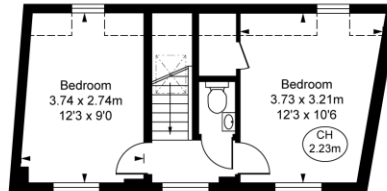
105 Wilton Road
London
SW1V 1DZ

westminsterlettingsusers@chestertons.co.uk
02030408220
chestertons.co.uk

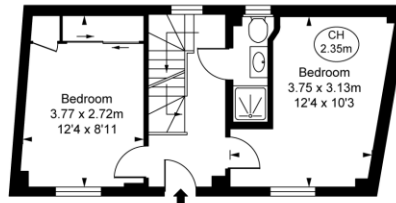
Guildhouse Street, SW1V

Approximate Gross Internal Area
116.75 sq m / 1,257 sq ft

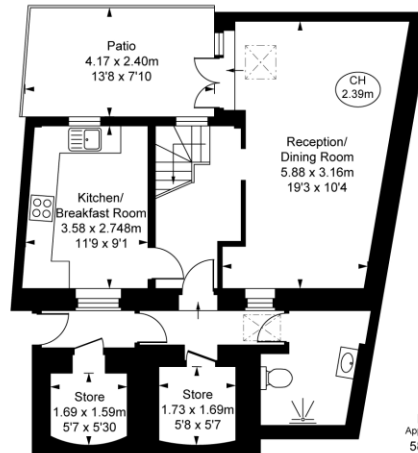
(Including restricted height
under 1.5m (-----))
(CH = Ceiling Heights)



First Floor
Approximate Gross Internal Area
28.41 sq m / 306 sq ft



Ground Floor
Approximate Gross Internal Area
29.48 sq m / 317 sq ft



Lower Ground Floor
Approximate Gross Internal Area
58.85 sq m / 633 sq ft

This plan is not to scale. It is for guidance and not for valuation purposes.
All measurements and areas are approximate only, and have been prepared in accordance with the current edition of the RICS Code of Measuring Practice.
© Fulham Performance

Chesterton UK Services Limited trading as Chestertons for themselves and for the vendor of this property whose agents they are, give notice that (i) these particulars do not constitute any part of an offer or contract, (ii) all statements contained within these particulars are made without responsibility on the part of Chestertons or the vendor, (iii) whilst made in good faith, none of the statements contained within these particulars are to be relied upon as a statement or representation of fact, (iv) any intending purchasers must satisfy themselves by inspection or otherwise as to the correctness of each of the statements contained within these particulars, (v) the vendor does not make or give either Chestertons or any person in their employment any authority to make or give representation or warranty whatsoever in relation to this property. Wide angle lenses may be used. ©Copyright Chestertons | Chesterton Global Ltd | Registered Office 40 Connaught Street, Hyde Park, London W2 2AB Registered Company Number 05334580.



This paper is
100% recyclable