



## Scotts Avenue, TW16

£779,950

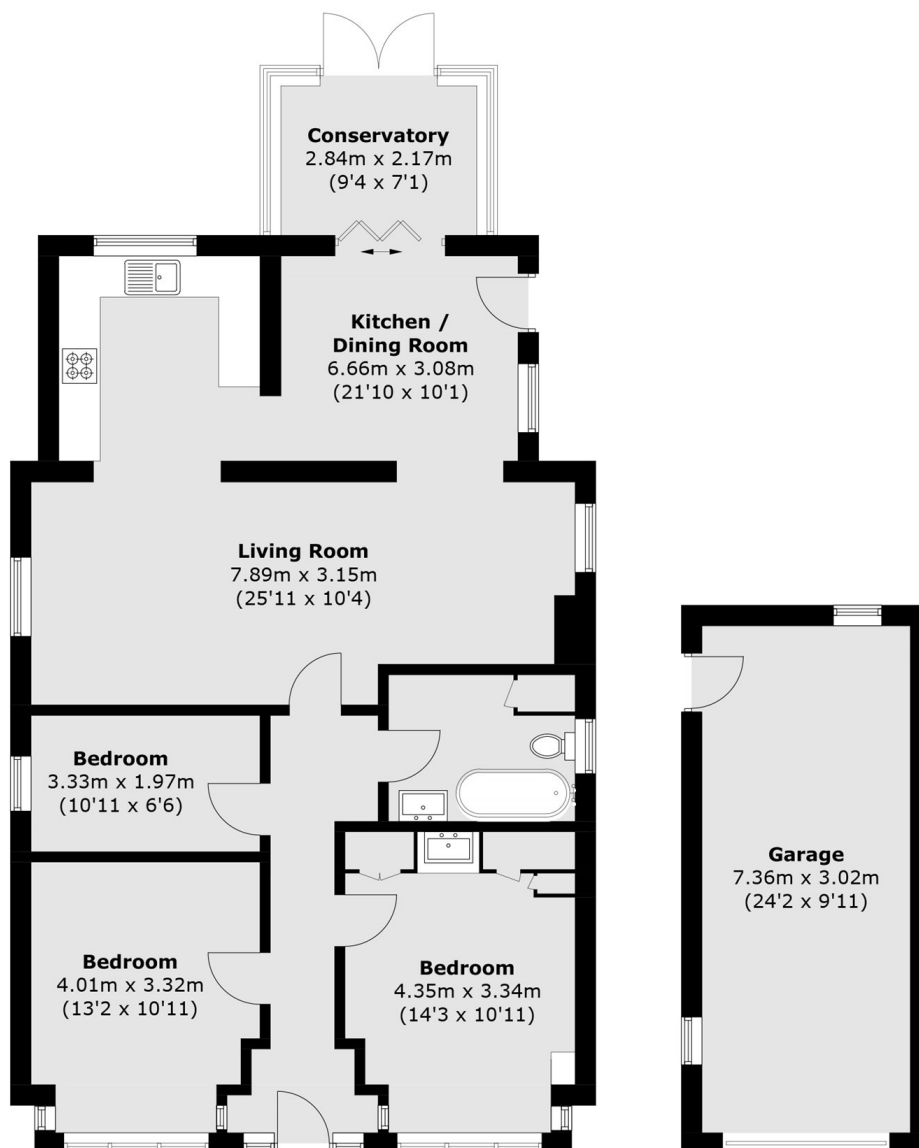
An extended three bedroom detached bungalow with a large rear garden, off-street parking, a car port and a garage. This spacious property is full of potential and ideal if you were looking for a home that you can put your own stamp on. There is the added bonus of no forward chain.

Scotts Avenue is a prestigious tree lined road located off Cadbury Road and the Staines Road West. Sunbury Station which provides a direct service into Waterloo and the local shops and amenities at Sunbury Cross are just over half a mile away.

### Features

- Detached
- Three Bedrooms
- Conservatory
- Large Garden
- Off-Street Parking
- Garage

# Scotts Avenue, Sunbury-On-Thames, TW16



## Ground Floor

(Not Shown In Actual  
Location / Orientation)

Total area (approx.): 103.4 sq. m (1,113.0 sq. ft)

Garage: 22.3 sq. m (240.0 sq. ft)