



PERIOD
HOMES

Front Lane, Upminster. RM11 1LL

Guide Price £650,000 - £700,000

Guide Price - £650,000 - £700,000

Occupying a substantial corner plot is this spacious four bedroom semi-detached mock-Tudor style property, bursting with character features. With two reception rooms alongside a separate kitchen and conservatory to the ground floor, with four bedrooms and family bathroom to the first, there is still further potential to extend and develop (STPP). Further benefits include an integral garage and large driveway.

The internal accommodation commences with a spacious and welcoming entrance hallway. From here a pair of internal double doors open through to the principal reception room. Drawing light from a window to the front elevation, the room is centered around an impressive brick fireplace. A small lobby area provides access to the ground floor WC and the separate kitchen. The kitchen area comprises of a range of above and below counter storage units, ample worktop space and various integrated appliances. The conservatory is also accessed from the kitchen. A separate wood paneled dining room completes the ground floor layout.

Heading upstairs, the master bedroom is a generously proportioned double room, as is the second bedroom, which features a built-in shower. Bedrooms three and four are both spacious enough to accommodate double beds if required. Finally, there is a four piece family bathroom suite.

Externally, the property enjoys a mature and private wrap around garden, ensuring sunny areas throughout the day. The integral garage is large enough to accommodate a modest size vehicle, with plenty of further off road parking available via the large driveway.



Front Lane

Upminster, RM11 1LL

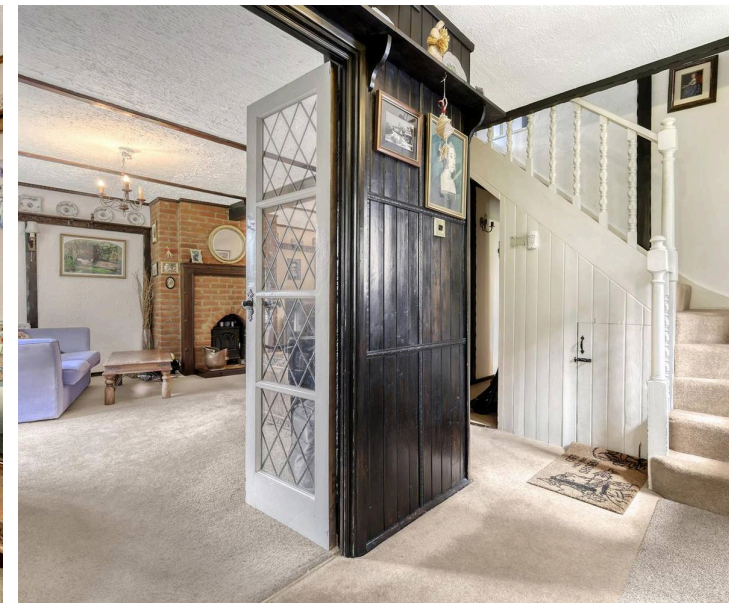
****Guide Price - £650,000 - £700,000**** Occupying a substantial corner plot is this spacious four bedroom semi-detached mock-Tudor style property, b...

Council Tax band: F

Tenure: Freehold

EPC Energy Efficiency Rating: D

EPC Environmental Impact Rating: E









FRONT LANE

Approx. Gross Internal Area 169.6 Sq M (1826 Sq Ft)

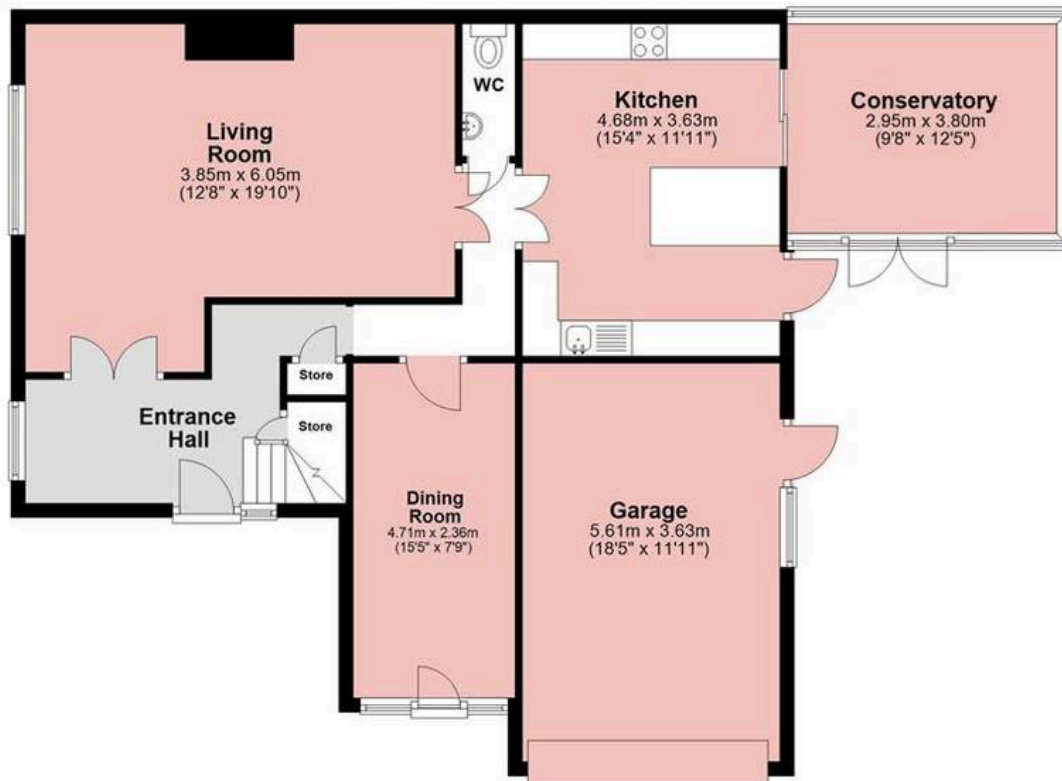


PERIOD HOMES



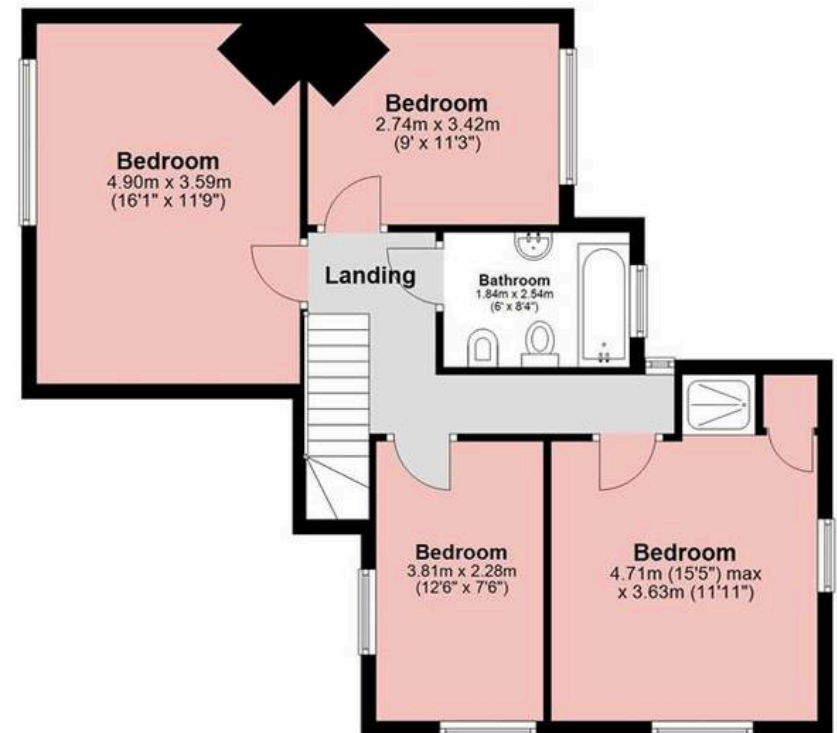
Ground Floor

Approx. 103.2 sq. metres (1111.3 sq. feet)



First Floor

Approx. 66.4 sq. metres (714.8 sq. feet)



Measurements are approximate and for illustration purposes only. While we do not doubt the accuracy and completeness, we advise you conduct a careful independent assessment of the property to determine monetary value.

About Us

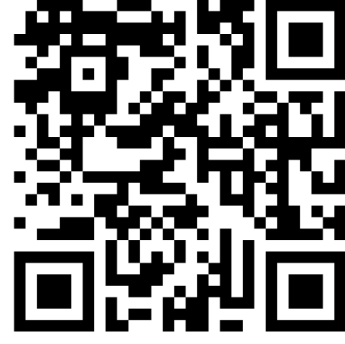
From charming cottages to country estates, all our homes have a story to tell... 'Period Homes' is one of a kind, an agency dedicated to the sale of character and period properties across Essex.

If you would like to buy a period home but you have a modern home to sell first, we can assist via our sister company, Walkers, which just so happens to have been voted Britain's Best Estate Agency in the British Property Awards. That way, both elements of your move are in the very best of hands.

Get In Touch



Browse Properties



Contact Us
01277 288000



Our Website
periodhomes.co.uk



Our Address

Eaton House
High Street
Ingestone
CM4 9DW



PERIOD
HOMES

Psst... Have you heard of
discreet marketing?

Many people lose out on their dream home to someone in a better position.

Often, it is because they have delayed putting their house on the market, preferring to find somewhere first and then sell.

That is why we have innovated a totally unique and high confidential moving home solution to put you in a competitive position.

Let us find you a buyer without any advertising or pressure and without the neighbours knowing.

Your secret is safe with us...

Get in touch for a
complimentary valuation.

Looking To Sell Or Let Your Home?

Book your free valuation to see how much your home is worth.