



Flat 22 East Quay House, 17 Marrowbone Slip, Sutton Harbour, Plymouth, PL4 0HX



## Guide Price £275,000



'East Quay House' is a much sought-after waterside development located on the eastern quay in Sutton Harbour with a delightful westerly aspect and exceptional panoramic views across the marina, city and towards Plymouth Sound. This immaculate and well-maintained apartment is a must view for serious buyers looking for a waterside home. 'East Quay House' was completed by Charles Church Developments in 2006 and comprises 56 apartments, many with delightful waterside views and gated parking for all properties.

From a security-controlled reception area on East Quay, with mailboxes and a TV entry phone system, there is access to an inner hall with door to car park, lift and stairs to all floors. There is level access throughout the building ideal for those looking for single level living.

From the first level landing, shared between only 4 apartments, a corridor leads to the apartment front door. An Oak door leads into apartment with doors off to all rooms. The superb living room is spacious and has a picture bay window with truly impressive views of the waterfront, Sutton Harbour Marina, and westerly towards The Barbican and The Hoe. There is a glazed door to the covered balcony which is a delightful size offering ample space for alfresco dining and has views in full, a wonderful space to relax and take in the views during the day and evening.

The separate kitchen is comprehensively fitted with a range units and integrated appliances including dishwasher, washer dryer, four ring gas hob with oven below, a microwave, larder fridge and freezer, stainless steel sink with mixer tap and waste disposal, and under unit lighting.

The master bedroom is luxurious and spacious, there is a built-in wardrobe and ample space for a dressing table, etc. The en-suite shower room has a suite comprising a double walk-in shower enclosure and glazed screen/door, sink with chrome mixer tap and mirror over, dual flush w.c., ladder heated towel rail, and fully tiled walls and floor.

The second bedroom is deceptively spacious and is ideal for guests/study room. The family bathroom has a shower, with screen, over the bath, recessed sink with chrome mixer, dual flush w.c., chrome ladder heated towel rail, fully tiled walls with feature glazed tile, and tiled floor.

Within the apartment hall there are a pair of cupboards, one houses a pressurized hot water system and offers airing cupboard space, the other houses the gas central heating boiler and space for further storage. There is also a double door cupboard to provide extra storage.

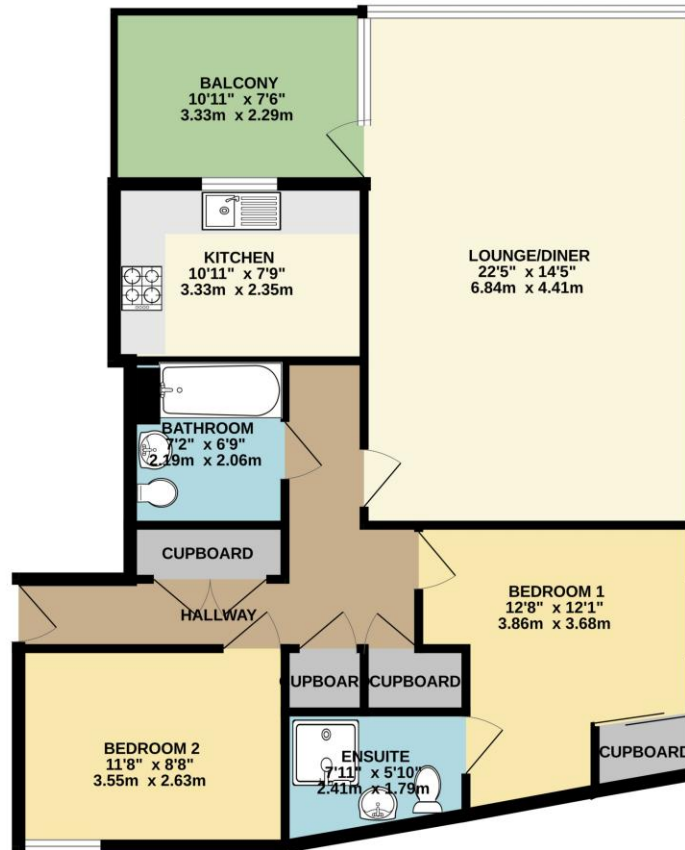
Outside there is allocated parking for one vehicle within a gated car park. This apartment has a real 'Wow factor' as soon as you enter, and an early viewing is recommended to avoid disappointment.

We understand the apartment is held on Lease with 975 years remaining and subject to a service charge of approximately £4019.38 per year, but this is subject to periodic review and an annual ground rent of approximately £100. The above information is provided in good faith although we would recommend that prospective purchasers consult their own solicitor for formal verification.



To view this property call Lang Town & Country Estate Agents on [01752 200909](tel:01752 200909).





TOTAL FLOOR AREA : 857 sq.ft. (79.6 sq.m.) approx.  
 Whilst every attempt has been made to ensure the accuracy of the floorplan contained here, measurements of doors, windows, rooms and any other items are approximate and no responsibility is taken for any error, omission or mis-statement. This plan is for illustrative purposes only and should be used as such by any prospective purchaser. The services, systems and appliances shown have not been tested and no guarantee as to their operability or efficiency can be given.  
 Made with Metropix ©2026



Lang Town & Country  
 6 Mannamead Road  
 Mutley  
 Plymouth  
 PL4 7AA  
 Email: [waterside@langtownandcountry.com](mailto:waterside@langtownandcountry.com)  
 Tel: 01752 200909

Lang Town & Country endeavour to ensure the accuracy of property details produced and displayed, we have not tested any apparatus, equipment, fixtures, fittings or services and so cannot verify that they are connected, in working order or fit for purpose. A buyer must check the availability of any property and make an appointment to view before embarking on any journey to see a property.

