



Waltwood Park Drive | Llanmartin | Newport | NP18 2HE

£900 Per Month

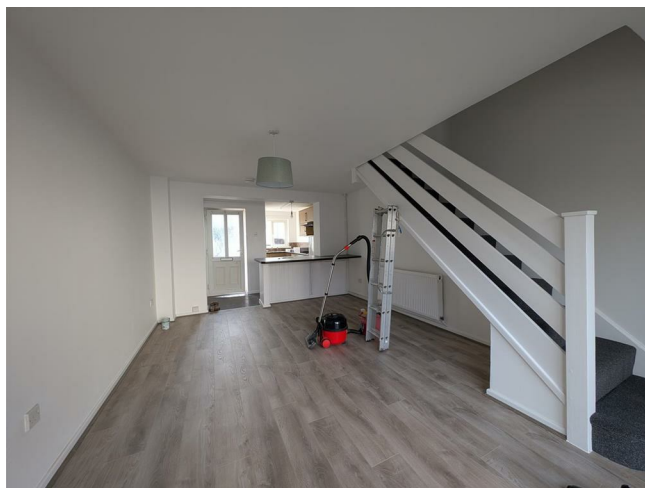


## Key features

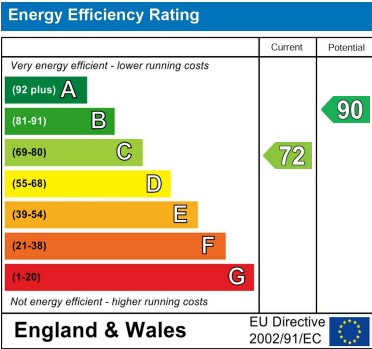
## Description

ONE BEDROOM END OF TERRACE HOUSE \* Entrance Hallway \* Modern Kitchen with Range of Units, Integral Electric Hob and Oven, Freestanding Fridge/Freezer, Space for Washing Machine \* Large Breakfast Bar Dividing Kitchen from Lounge \* Large Lounge with Patio Doors to the Garden and Stairs to First Floor, new laminate flooring\* Double Bedroom, new carpet \* Bathroom with White Suite, Bath with Electric Shower Over, Washbasin and W/C \* Gas Central Heating \* One Parking Space \* Pets May be Considered \* This property is managed by the Landlord, who is Licensed by Rent Smart Wales \* AVAILABLE NOW \* Holding Deposit £205, Security Deposit £1245 Council Tax Band B

## Directions







8 Newport Road  
Caldicot  
Monmouthshire  
NP26 4HX  
01291 421600

[nj@nathanjamesestateagents.co.uk](mailto:nj@nathanjamesestateagents.co.uk)  
[nathanjamesestateagents.com](http://nathanjamesestateagents.com)