



The Hollins offers over £300,000

- Exceptional Family Home
- Sizable, Wrapping Corner Plot
- Driveway for Ample Off-Street Parking
- Open Plan Living Spaces
- Four Double Bedrooms
- EPC Rating: D



 4  1  1

 **peter
alan**

01639 635115
neath@peteralan.co.uk



About the property

This deceptively spacious and well presented family home is now available for sale with the heart of Cimla, Neath! Excellent for attendance to popular schools such as Gnoll/Crynalit Primary, Cefn Saeson Community Comprehensive and Neath College! Perfect for commuters with great links to public transport via bus or train as well as the M4 corridor/A465! The home is approached through a lawned frontage and driveway toward the garage door. Side access is available through to an enclosed rear garden, low maintenance and mainly laid with paved patio. Atop stands a wooden shed with potential for use as a home office or summer house. Internally, the property comprises of an entrance porch and hallway, with horse-shoe stairs to the landing and doors through to a ground floor w.c., open plan lounge and dining area, a conservatory and the fitted kitchen with 'converted' rear of the garage, perfect for dining space or soaking in the sun! The front of the garage now houses storage space and utilities. The first floor comprises of all four double bedrooms and the four piece family bathroom suite. Internal viewings are highly recommended to truly appreciate this lovely home.

Accommodation

Entrance Porch

Entrance Hall

Cloakroom

Lounge Area

17' 9" x 11' 9" (5.41m x 3.58m)

Dining Area

11' x 9' 8" (3.35m x 2.95m)



Conservatory

11' 2" x 8' 4" (3.40m x 2.54m)

Kitchen Area

12' 1" x 10' 7" Plus Recess (3.68m x 3.23m Plus Recess)

Sun Room

14' 5" x 7' 4" (4.39m x 2.24m)

Landing

Bedroom One

12' x 11' 1" (3.66m x 3.38m)

Bedroom Two

11' 1" x 10' 3" (3.38m x 3.12m)

Bedroom Three

11' 2" x 9' 2" (3.40m x 2.79m)

Bedroom Four

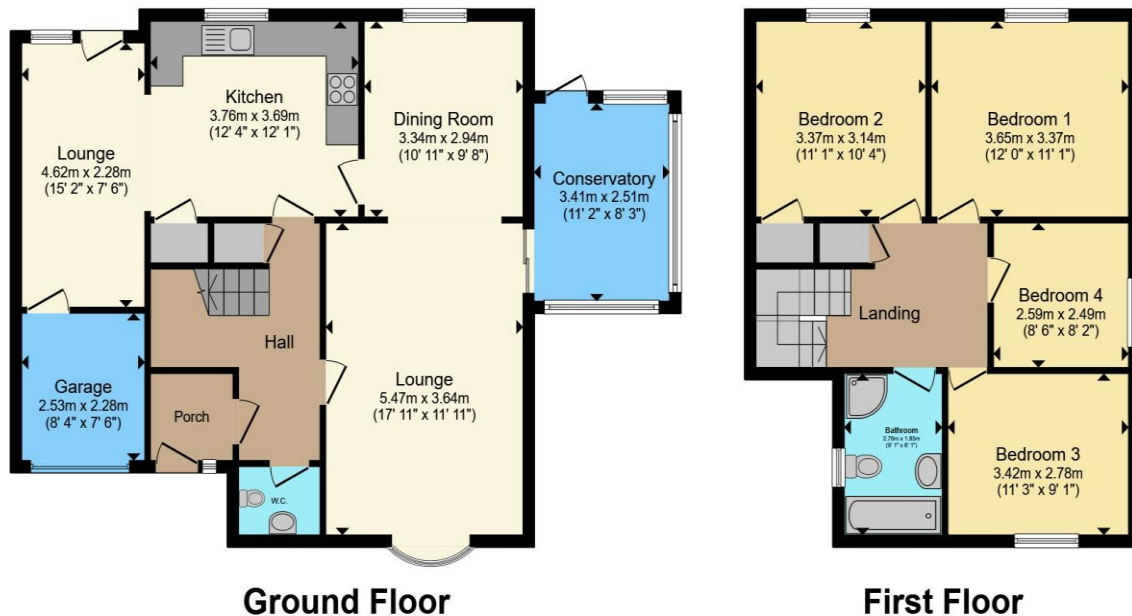
8' 5" x 8' 1" (2.57m x 2.46m)

Bathroom

Front & Rear Garden

Driveway

Floorplan



Total floor area 141.9 m² (1,527 sq.ft.) approx

This floor plan is for illustrative purposes only. It is not drawn to scale. Any measurements, floor areas (including any total floor area), openings and orientation are approximate. No details are guaranteed, they cannot be relied upon for any purpose and they do not form part of any agreement. No liability is taken for any error, omission or misstatement. A party must rely upon its own inspection(s). Powered by www.propertybox.io



Important Information

Note while we endeavour to make our sales details accurate and reliable, if there is any point which is of particular interest to you, please contact the office and we will be pleased to confirm the position for you. We have not personally tested any apparatus, equipment, fixtures, fittings or services and cannot verify they are in working order or fit for their purposes. Nothing in these particulars is intended to indicate that carpets or curtains, furnishings or fittings, electrical goods (whether wired or not). Gas fires or light fittings or any other fixtures not expressly included form part of the property offered for sale. This computer generated Floorplan, if applicable, is intended as a general guide to the layout and design of the property. It is not to scale and should not be relied upon for dimensions. Tenure: We cannot confirm the tenure of the property as we have not had access to the legal documents. The buyer is advised to obtain verification from their solicitor or surveyor.

Peter Alan Limited is registered in England and Wales under company number 2073153, Registered Office is Cumbria House, 16-20 Hockliffe Street, Leighton Buzzard, Bedfordshire, LU7 1GN. VAT Registration Number is 500 2481 05. For activities relating to regulated mortgages and non-investment insurance contracts, Peter Alan Limited is an appointed representative of Connells Limited which is authorised and regulated by the Financial Conduct Authority. Connells Limited's Financial Services Register number is 302221. Most buy-to-let