



RESIDE
MANCHESTER

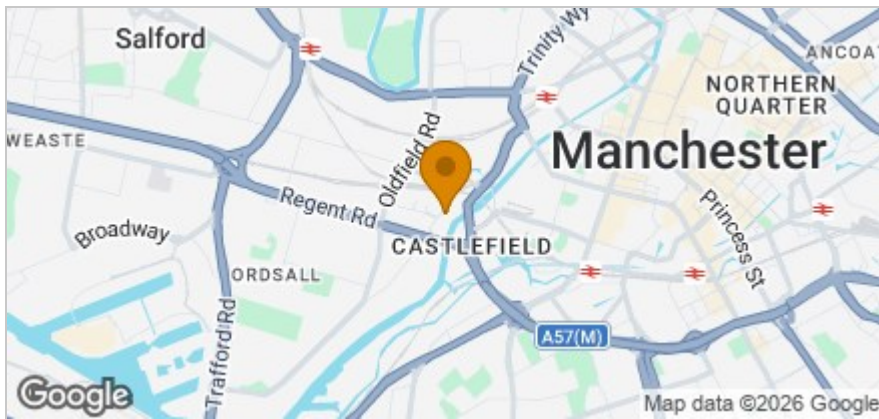
Wilburn Basin, Salford, M5 4XS
£1,350 PCM



Floor Plan



Area Map



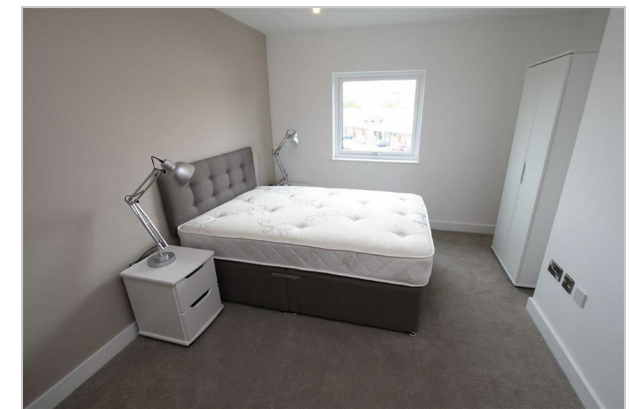
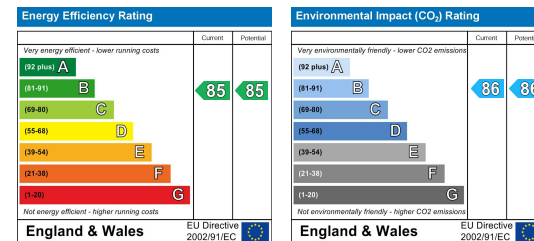
Accommodation

- Two Spacious Double Bedrooms
- Two Bathrooms
- Furnished Throughout
- Secure Allocated Car Parking Space
- Available 30th April 2026
- EPC Rating B
- Video Tour Available
- Walking Distance to Castlefield & City Centre
- Residents' Gym, Cinema Room & 24-Hour Concierge
- Popular Wilburn Basin Development

Viewing

Please contact our Reside Manchester Office on 0161 837 2840 if you wish to arrange a viewing appointment for this property or require further information.

Energy Efficiency Graph



These particulars, whilst believed to be accurate are set out as a general outline only for guidance and do not constitute any part of an offer or contract. Intending purchasers should not rely on them as statements of representation of fact, but must satisfy themselves by inspection or otherwise as to their accuracy. No person in this firm's employment has the authority to make or give any representation or warranty in respect of the property.

Upper Ground, 4 Jordan Street, Manchester, Greater Manchester, M15 4PY

Tel: 0161 837 2840 Email: info@residemanchester.com www.reside-property.com