



OFFERS OVER

**£425,000**

**The Barn, East Browncastle**  
Strathaven, ML10 6QW

## PROPERTY SUMMARY

Set amidst a stunning rural location within close proximity to Strathaven is the attractive, four-bedroom, detached barn conversion. Forming part of a small and exclusive, gated development this unique property has been cleverly and sympathetically constructed to offer bright and spacious accommodation conducive with modern family living, whilst retaining the rural charm expected of a country home.

The perfectly formed layout of apartments comprises; broad and welcoming reception hallway with striking double height galleried balcony, two-piece cloaks/wc, hall storage, substantial lounge with log burning stove; this lovely room is flooded with light coming from a full length window and French doors to garden, dining room with French doors opening onto raised timber decking area ideal for outdoor entertaining, and utility room with access to side garden and integrated garage.

On the upper level is a generous mezzanine landing large enough to be utilised as a lounge area and/or home office, four, well-proportioned bedrooms, the master bedroom with its own en-suite shower room. The fourth bedroom is currently being used as a fully fitted dressing room. All four bedrooms enjoy the wonderful rural outlook. Completing the first-floor accommodation is a four-piece family bathroom.

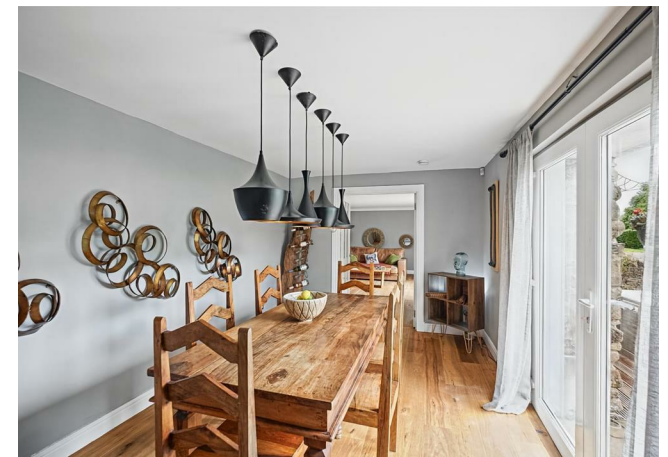
4



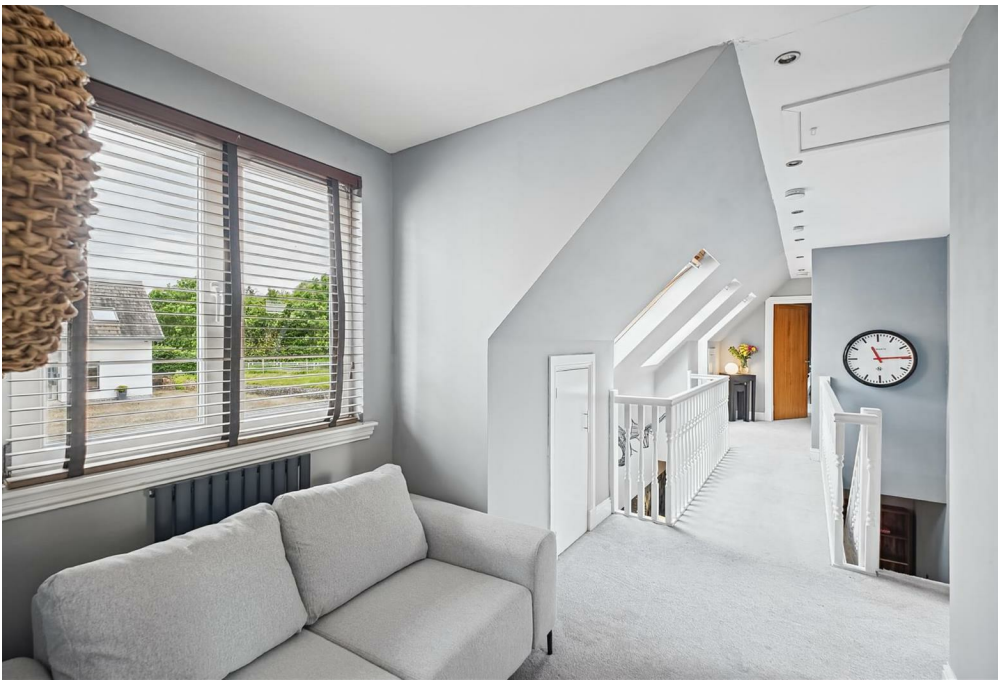
2



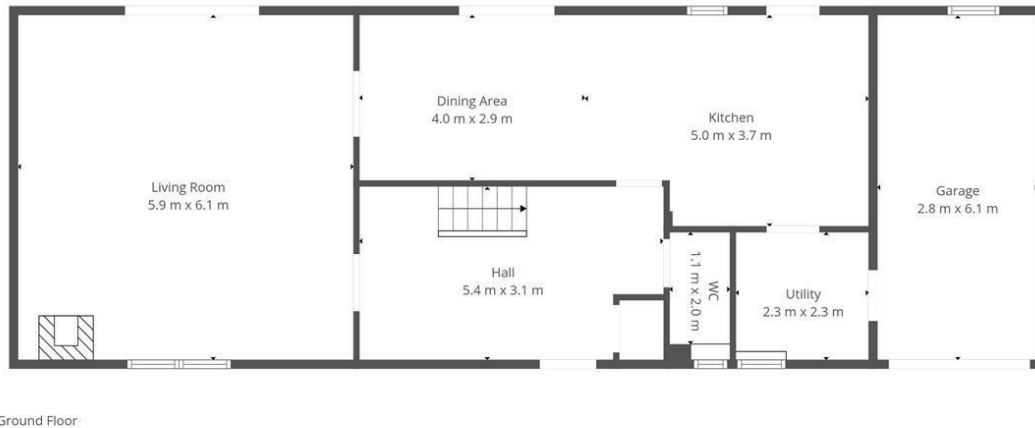
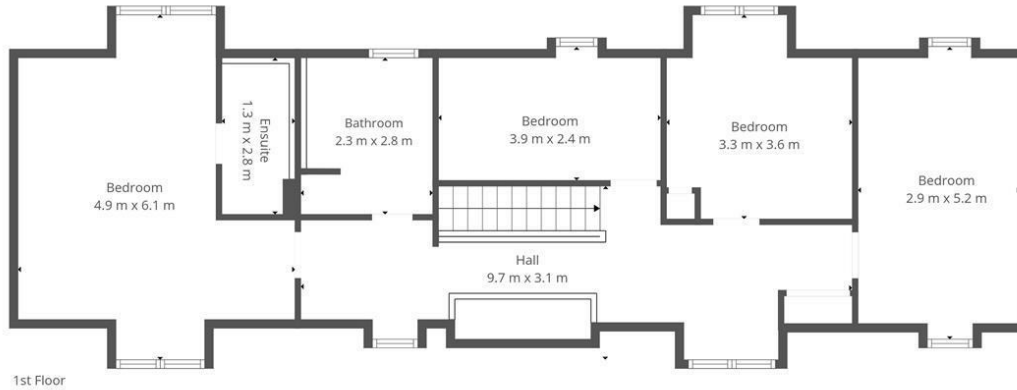
2











## LOCAL AUTHORITY

South Lanarkshire

## TENURE

Freehold

## COUNCIL TAX BAND

F

## VIEWINGS

By prior appointment only

Energy Efficiency Rating		Current	Potential
<i>Very energy efficient - lower running costs</i>			
(82 plus)	A		81
(81-81)	B		
(69-80)	C	75	
(55-68)	D		
(39-54)	E		
(21-38)	F		
(1-20)	G		
<i>Not energy efficient - higher running costs</i>			
<b>Scotland</b>		EU Directive 2002/91/EC	

Agents Note: Whilst every care has been taken to prepare these particulars, they are for guidance purposes only. All measurements are approximate and are for general guidance purposes only and whilst every care has been taken to ensure their accuracy, they should not be relied upon and potential buyers/tenants are advised to recheck the measurements



This Floorplan Is Intended To Give An Indication Of The Layout Only.



**OFFICE ADDRESS**  
9 Townhead Street  
Strathaven  
ML10 6AB

**OFFICE DETAILS**  
01357 510088  
judithmcgill@cruive-  
estateagents.co.uk