



A Stylish and Modern Detached home in the heart of Clenchwarton

what3words; crazy.punt.vote

Offers Over
£325,000

Bedrooms: 3 | Bathrooms: 1 | Receptions: 1

The best family homes don't just offer space, they make everyday life that little bit better.

Positioned in the heart of the ever-popular village of Clenchwarton, this beautifully presented detached home offers the perfect balance of modern living and village life. From highly regarded schools and everyday amenities to the welcoming community that makes the village so special, everything you need is close at hand, while the comfort and style of this home make it somewhere you'll look forward to returning to every day.

From the moment you step inside, there's an immediate sense of warmth. Bright, contemporary interiors are complemented by generous room proportions, creating a home that's as practical as it is inviting.

At its heart lies the stunning kitchen and dining room. Stretching to over 24 feet in length, it's the space where family life naturally unfolds. Busy weekday breakfasts, homework around the table, Sunday lunches with family or evenings entertaining friends, it effortlessly adapts to every occasion. The beautifully designed kitchen offers excellent storage and workspace, while the bi-fold doors open the room directly onto the south-facing garden, allowing indoor and outdoor living to become one during the warmer months.

For quieter moments, the living room provides the perfect retreat. Comfortable, light-filled and welcoming, it's somewhere to relax at the end of a busy day or simply enjoy a peaceful evening with the family.

The practical touches continue throughout the ground floor. A generous utility room keeps the everyday essentials neatly tucked away, while a cloakroom and under-stairs storage add the kind of convenience that makes family life run that little bit more smoothly.

Upstairs, the home continues to impress. The spacious landing is more than simply a route between rooms, it offers the flexibility to become a reading nook, a study area or even a comfortable space for working from home. All three bedrooms are genuine doubles, offering exceptional versatility, but it's the principal bedroom that truly steals the show. Stretching to over 18 feet in length, it feels more like a private suite than simply a bedroom, creating a peaceful sanctuary to escape to at the end of the day. A beautifully appointed family bathroom completes the first floor.

Outside, the lifestyle appeal continues. To the front, ample off-road parking and a garage provide everyday practicality, while the garage itself offers exciting future potential. Subject to the necessary permissions, it could be converted into additional living accommodation, a home office or even a ground-floor bedroom with en-suite, allowing the home to evolve as your family's needs change.

The south-facing rear garden is the perfect finishing touch. Wonderfully private and fully enclosed, it provides a safe space for children and pets to play, while the patio creates an ideal setting for summer barbecues, evening drinks or simply soaking up the sunshine. Easy to enjoy and beautifully proportioned, it's a garden designed for making memories.

Ready to move straight into and thoughtfully designed for modern family life, this is more than just a house, it's a home where life's everyday moments become the ones you'll remember for years to come.

Tenure: Freehold

Property Type: Detached House

- Modern Detached House
- Three Bedrooms
- Set in Heart of Village - Close to Shop, School, Pub and More
- Contemporary Kitchen/Dining Room
- Off-road Parking and Garage
- Private, South-facing Rear Garden
- Popular Norfolk Village
- Wonderfully Presented - Move in Ready
- Oil Fired Central Heating
- Ideal Family Home

Disclaimer

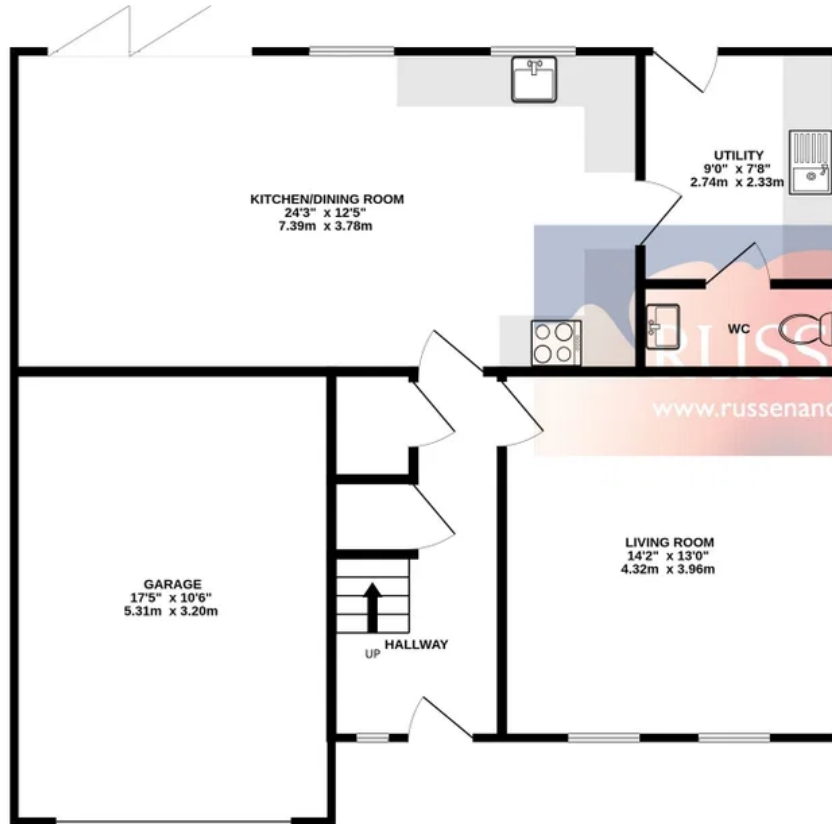
1. To meet money-laundering regulations, all buyers will need to complete an ID check. We'll ask you to provide the necessary documents, and there's a small fee of £24.50 per client for this service.
2. We do our best to make sure our property details are fair, accurate, and up to date, but they're meant as a general guide only. If there's anything particularly important to you, please get in touch, we'll be happy to look into it further.
3. All measurements are provided as a guide and may not be exact.
4. We haven't tested any of the property's services, equipment, or appliances. We recommend that buyers arrange their own survey or service checks before making a final offer.
5. These details are provided in good faith, but they don't form part of any offer or contract. Buyers should verify any points that are important to them before proceeding.

Referral Disclosure

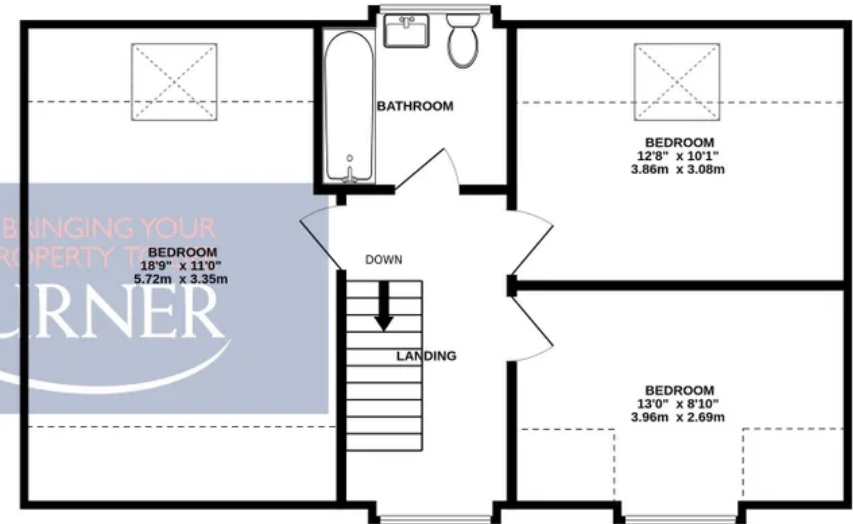
We may recommend / refer solicitors, mortgage advisers, surveyors and other property professionals who we believe provide a good service. Should you choose to use one of these providers, Russen & Turner may receive a referral fee. You are under no obligation to use any service we recommend and are free to choose your own adviser or provider.



GROUND FLOOR
887 sq.ft. (82.4 sq.m.) approx.



1ST FLOOR
601 sq.ft. (55.9 sq.m.) approx.



TOTAL FLOOR AREA : 1488 sq.ft. (138.2 sq.m.) approx.

Whilst every attempt has been made to ensure the accuracy of the floorplan contained here, measurements of doors, windows, rooms and any other items are approximate and no responsibility is taken for any error, omission or mis-statement. This plan is for illustrative purposes only and should be used as such by any prospective purchaser. The services, systems and appliances shown have not been tested and no guarantee as to their operability or efficiency can be given.
Made with Metropix ©2026