



Cavendish Gardens, SW4

£625,000

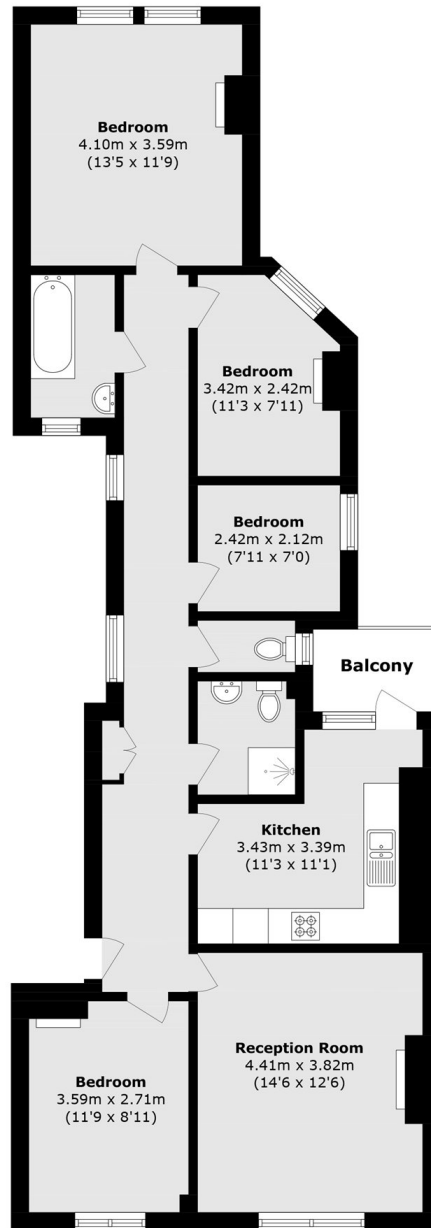
Representing one of the best purchase opportunities locally, this top floor period mansion apartment provides over 1,000 sq.ft of versatile accommodation, has access to a superbly maintained communal garden and off-street parking on a first come, first served basis. Comprising a large reception room, a separate kitchen, four bedrooms and two bathrooms. Offered with a share of freehold and no onward chain.

Trouville Road is a tree-lined residential road located in the Abbeville Village, an area renowned for its many local restaurants and boutique shops. Clapham Common and Clapham South station (Northern Line) are a short walk away.

Features

- Period Mansion Apartment
- Four Bedrooms
- Two Bathrooms
- Communal Garden
- Share Of Freehold
- Chain Free

Cavendish Gardens, , SW4



Total area (approx.): 94.2 sq. m (1013.9 sq. ft)
Balcony total (approx.): 2.9 sq. m (31.2 sq. ft)