



jt | JORGENSENTURNER



Coningham Road,
Shepherds Bush, W12
Offers In Excess Of £300,000



1



1



1

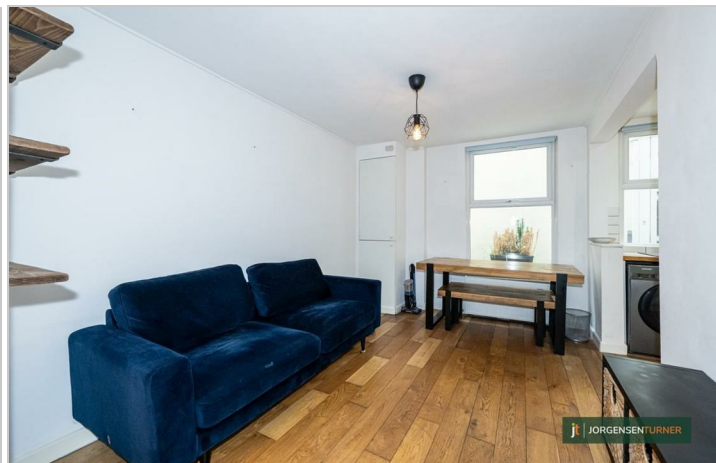
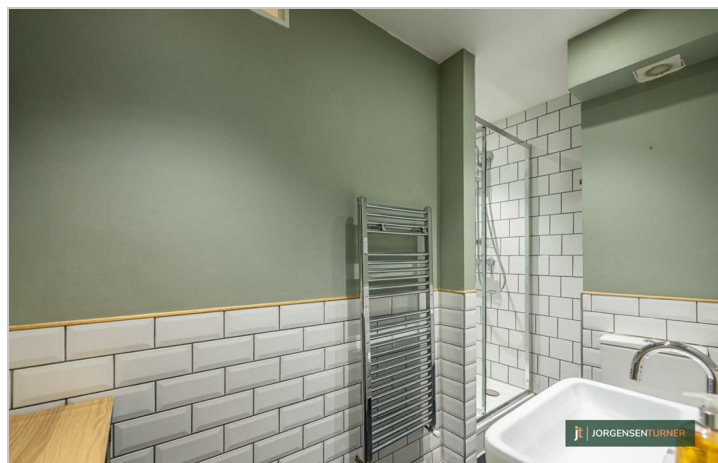
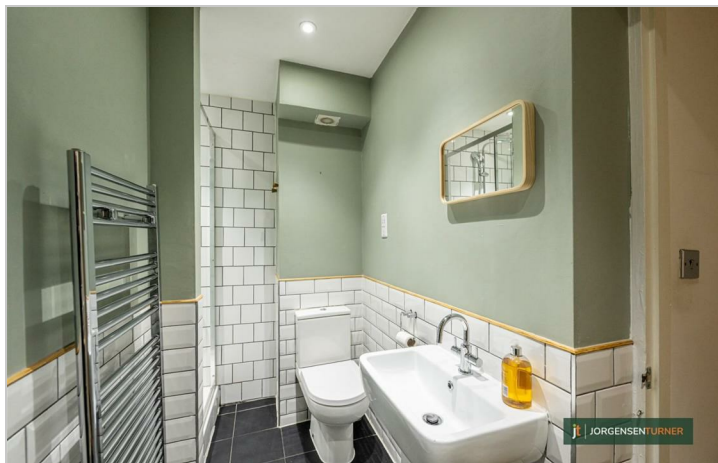


D



Coningham Road, Shepherds Bush, W12

Offers In Excess Of £300,000



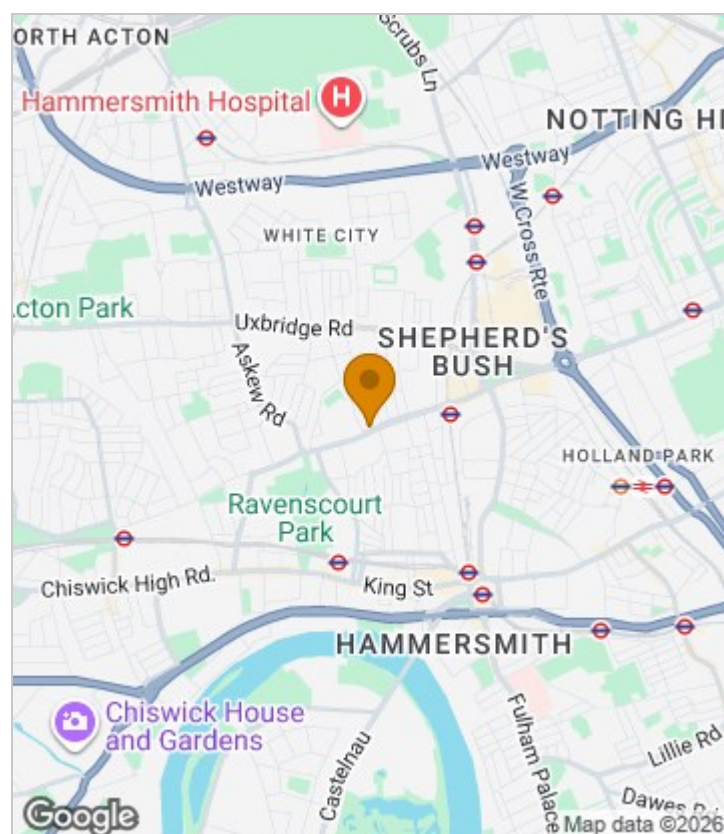
Summary Description

A beautifully presented one-bedroom conversion flat, ideally situated in the vibrant heart of Shepherd's Bush. This stylish home has been thoughtfully modernised throughout, showcasing a sleek, recently refurbished kitchen and a contemporary shower room. The bright and generously proportioned reception room features elegant wood flooring, while the double bedroom-positioned at the front of the property-enjoys an abundance of natural light.

Coningham Road enjoys a prime location between Goldhawk Road and Uxbridge Road, placing a wide array of shops, cafes, and restaurants within easy reach in both Shepherd's Bush and neighbouring Hammersmith. Excellent transport connections include numerous bus routes and several Underground stations within walking distance: Goldhawk Road (Hammersmith & City Line), Shepherd's Bush (Central Line), and Shepherd's Bush Overground. For those seeking green space, the open expanses of Ravenscourt Park are just a short stroll away-perfect for outdoor leisure.

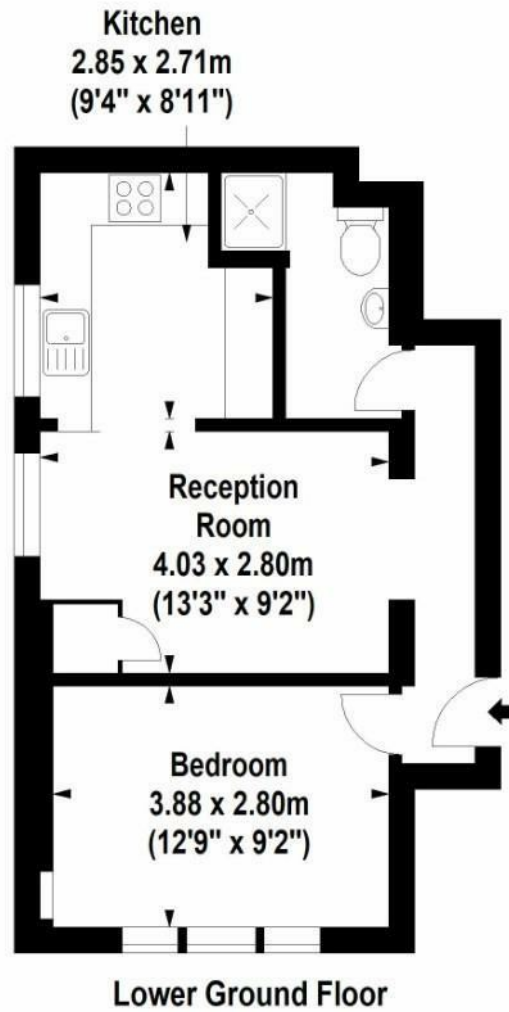
Leasehold – 99 years remaining
Service Charge – £2,700 per annum
Ground Rent – £200 per annum

Area Map





Floor Plan



For Identification Purposes Only. Not To Scale. © www.totalvista.uk 2024

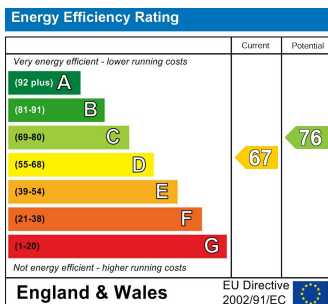


Coningham Road, W12

Approx. Gross Internal Area
39.58 Sq M - 426 Sq Ft



Energy Efficiency Graph



Viewing

Please contact our Sales SB Office on 0208 740 8740 if you wish to arrange a viewing appointment for this property or require further information.

- ONE BEDROOM FLAT
- WOOD FLOORING
- SPACIOUS DOUBLE BEDROOM
- WALKING DISTANCE TO WESTFIELD WHITE CITY
- GOOD CONDITION THROUGHOUT
- MODERN FITTED KITCHEN
- CENTRAL SHEPHERDS BUSH
- CENTRAL LINE OR HAMMERSMITH AND CITY LINE TUBES

For further information contact:

Sales SB, 234 Uxbridge Road, Shepherds Bush, London, W12 7JD

Tel: 0208 740 8740 Email: enquiries@jorgensenturner.com

<https://www.jorgensenturner.com/>

Disclaimer

These particulars, whilst believed to be accurate are set out as a general outline only for guidance and do not constitute any part of an offer or contract. Intending purchasers should not rely on them as statements of representation of fact, but must satisfy themselves by inspection or otherwise as to their accuracy. No person in this firm's employment has the authority to make or give any representation or warranty in respect of the property.