



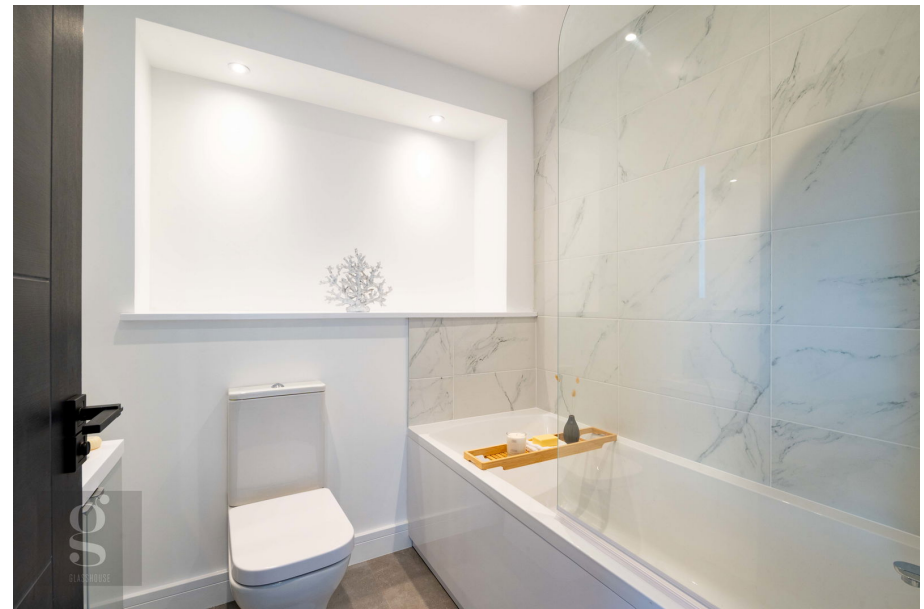
Holmer House Close, Hereford

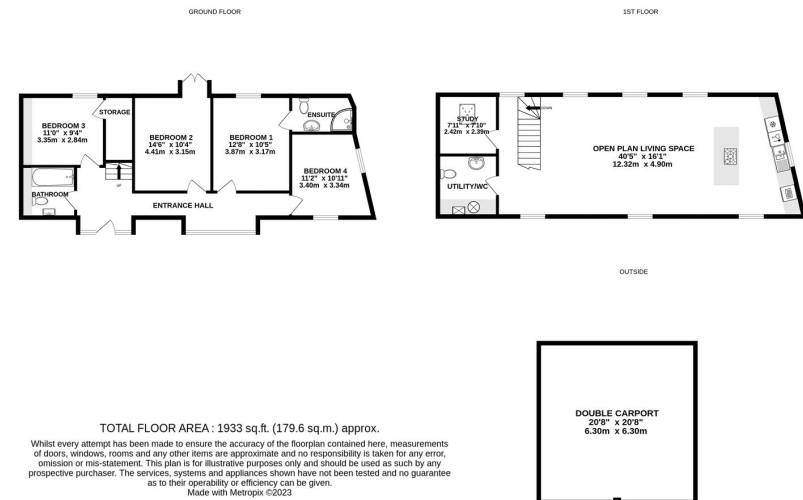
Guide Price £582,500

🛏️ 4 🚿 3 🚗 3



- Impressive Brand New Barn Conversion
- Exceptional Open Plan Living Space
- Very High Spec Finish Throughout
- Large Garden
- 4 Double Bedrooms; 1 with Ensuite
- Detached Double Carport Space
- Underfloor Heating to the Ground Floor
- 10 Year Structural Warranty





An Impressive Brand New 4 Double Bedroom Barn Conversion, finished to an exceptionally high standard and part of an exclusive cluster of just ten newly built and converted properties in Holmer, Hereford.

