



Apartment 4, Clyne Castle, Mill Lane, Blackpill, SA3 5BW

Two Bedrooms
Two Bathrooms
Grade II Listed Castle

LEASEHOLD with a
SHARE OF FREEHOLD

1,544 sqft

OFFERS IN THE REGION OF

£425,000

Historic grandeur, vast rooms and sunlight in one of Swansea's most prestigious addresses.







Apartment 4 is a magnificent ground-floor residence within the iconic Grade II listed Clyne Castle.

Extending to 1,658sqft, it offers extraordinary proportions, beautiful original detailing and an elegant modern finish — all set within the landscaped grounds of Clyne Gardens and moments from the seafront.







Built in 1791 and later refined by the Vivian family, Clyne Castle has long stood as one of Swansea's most distinguished residences, once welcoming guests such as Queen Victoria, Winston Churchill and King Edward VIII. Converted in 2005 into a collection of luxury apartments, the Castle retains its remarkable architectural presence, framed by its private gated entrance and mature communal gardens.

Apartment 4 offers 1,658sqft of beautifully appointed living space, notably generous in scale and flooded with natural light from its floor-to-ceiling windows. The main reception room is an exquisite space measuring 10.77m x 6.93m, showcasing original mahogany detailing, ornate ceiling plasterwork and a grand fireplace, all enhanced by dual-aspect glazing overlooking the gardens.



The kitchen is contemporary in style and fully fitted, designed to complement the classical backdrop. There are two spacious double bedrooms, including a luxurious principal suite with its own ensuite bathroom. A further family bathroom serves the second bedroom.

Throughout, the apartment blends period elegance with modern convenience, creating a home that feels both refined and exceptionally comfortable. The property is offered with no onward chain.



Tenure: Leasehold with a Share of Freehold
981 years left on the lease.
(Service charge totals
£9,112.80).

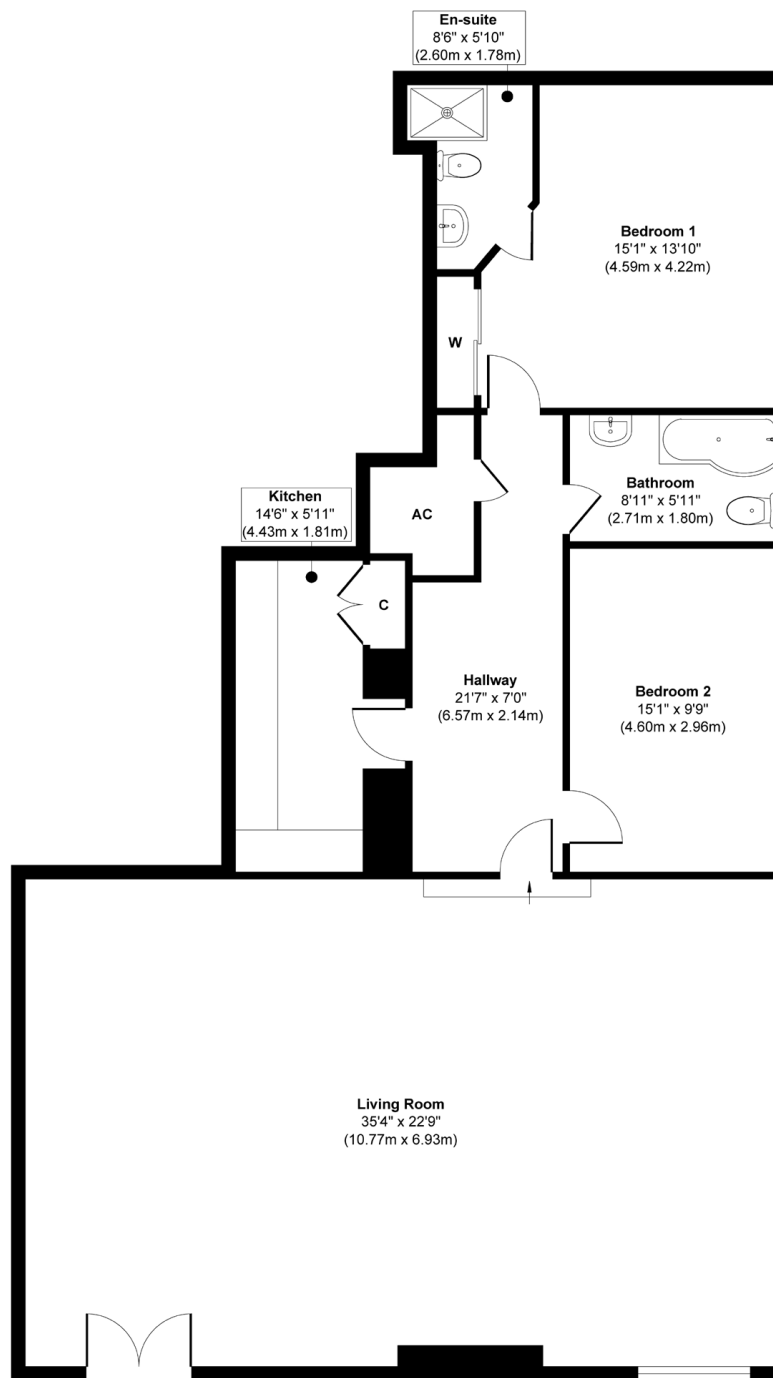
Services: Mains electricity,
water and drainage;
central heating.

Council Tax: Band G
(£3,571p.a.)

EPC Rating: Property is
exempt as it is Grade II
Listed.







Floor Plan

Approx. Gross Internal Floor Area 1544 sq. ft / 143.45 sq. m

Illustration for identification purposes only, measurements are approximate, not to scale.
Produced by Elements Property

The Location

Clyne Castle enjoys a privileged position at the edge of Clyne Gardens, one of Swansea's loveliest landscaped parks, celebrated for its botanical collection and peaceful walking routes. From the Castle's private gates, the Blackpill Promenade is just moments away, connecting Swansea Bay to the vibrant village of Mumbles with its cafés, boutiques, galleries and popular seafront restaurants.

The nearby coastal path stretches from the Marina to Mumbles Pier, while the sandy beaches of Langland and Caswell are easily reached within a few minutes by car. For commuting and wider travel, Swansea city centre lies approximately 3 miles away, and the M4 at junction 47 is around 6 miles. The location also provides excellent access to Swansea University and Singleton Hospital, both within 1.5 miles.

The setting is serene, sheltered within acres of mature woodland, yet wonderfully close to the amenities and coastline that define Swansea's southern edge.





THE
GREENROOM
ESTATE AGENCY

Telephone

01792 986099

Address

29-30 Dunns Lane
Mumbles
SA3 4AA

E-mail and Web

info@thegreenroomhomes.com
www.thegreenroomhomes.com.com

Whilst every effort has been made to ensure these details are accurate, they are for illustrative purposes only and should be read as a guide and not relied upon. Internal floorplans may be subject to alteration. Dimensions listed are maximum and approximate. computer generated images are for illustrative purposes only.