

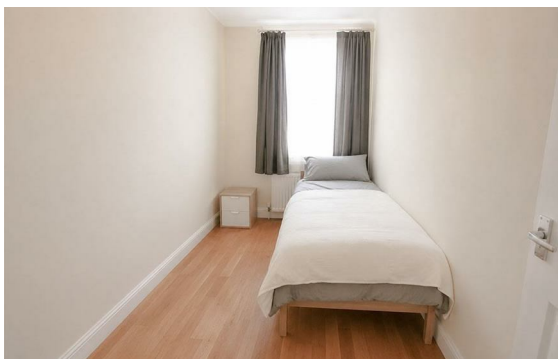


Bolsover Street, Fitzrovia, London, W1W

Rent £695 PCM

2 Bed | 1 Bath | 1 Reception

Please call us on 020 7724 2233 or email us info@newingtonstates.com to book a viewing.



Bright apartment in the heart of Fitzrovia. The property features a spacious reception room with large windows, a semi open-plan fitted kitchen, and two bedrooms comprising one double and one single. A family bathroom, separate guest WC, wooden flooring, and good storage enhance the comfort and functionality of the apartment.

Ideally located close to Warren Street Station and Goodle Street Station, with Charlotte Street, Oxford Street, and a wide range of cafés, restaurants, and local amenities within easy reach.

EPC Rating: C

Energy Efficiency Rating: C

Agents Note: Whilst every care has been taken to prepare these particulars, they are for guidance purposes only. All measurements are approximate and are for general guidance purposes only and whilst every care has been taken to ensure their accuracy, they should not be relied upon and potential buyers/tenants are advised to recheck the measurements.

NEWINGTON
— ESTATES —

60 Upper Montagu Street

London

W1H 1SN

020 7724 2233

info@newingtonstates.com

<http://www.newingtonstates.com>