



Rectory Lane, SW17

£3,300 Per calendar month

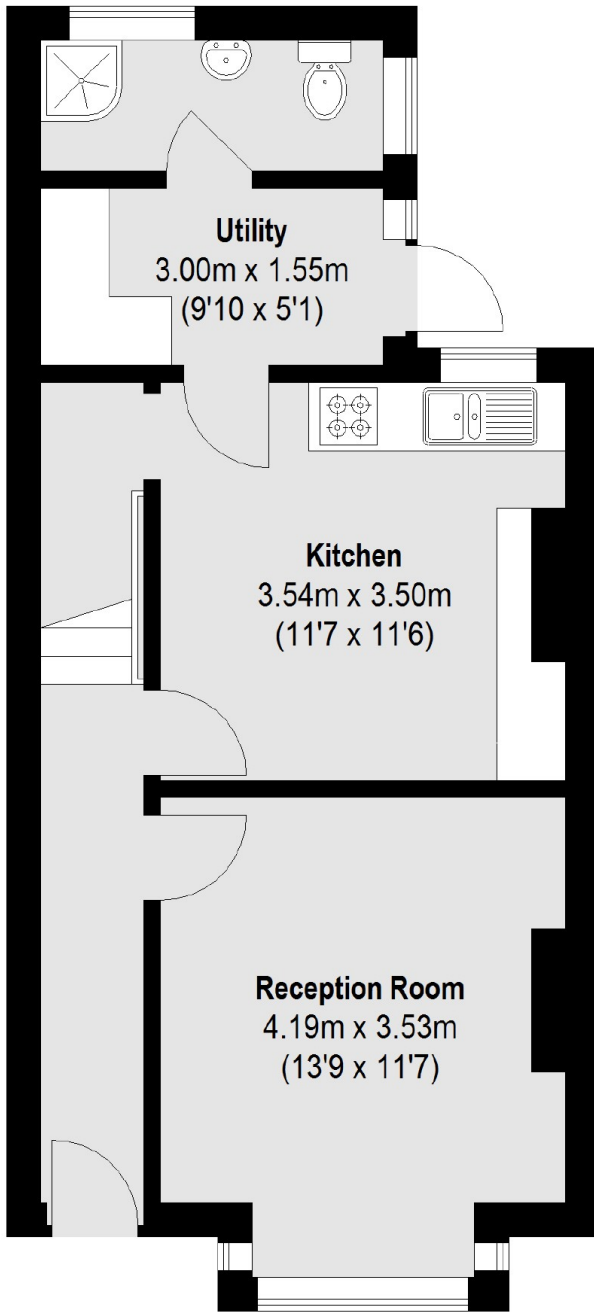
A well presented house with a bright reception room, separate eat-in kitchen, utility room, three double bedrooms, bathroom and private garden.

Rectory Lane is a residential street that offers easy access to the many bars, restaurants and shops of Tooting High Road and Furzedown Village. The vast open spaces of Tooting Bec Common are within walking distance, with Tooting Bec and Broadway Underground Stations close by.

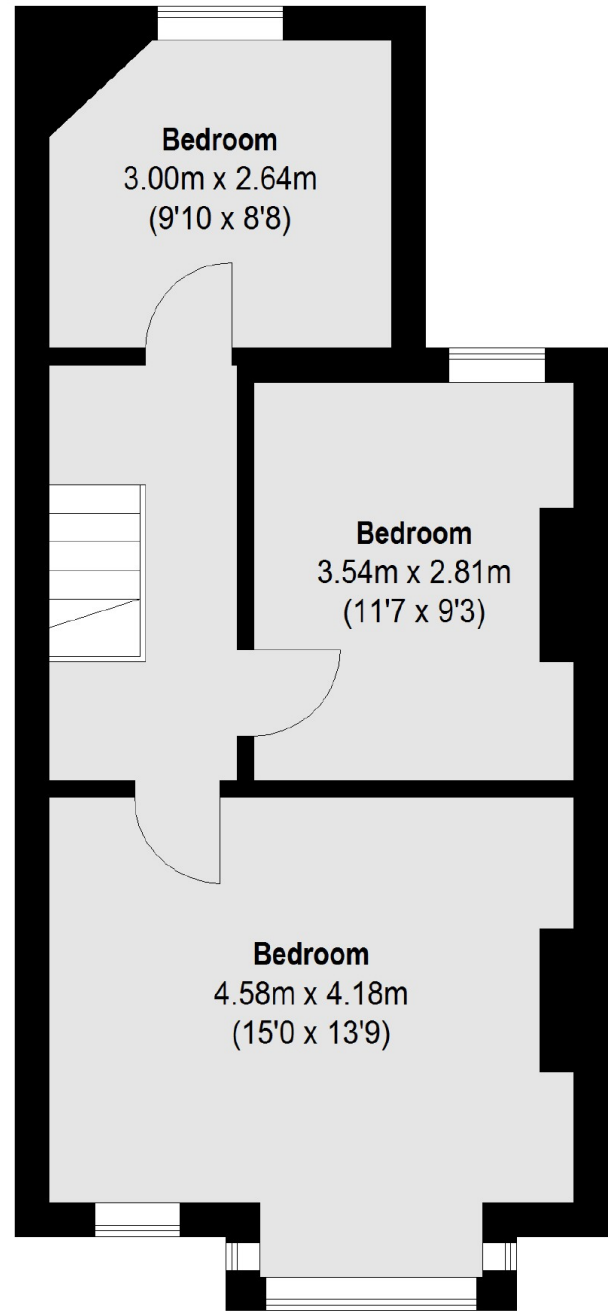
Features

- Terraced House
- Three Bedroom House
- Separate Reception Room
- Eat-In Kitchen
- Private Garden
- Tooting Commons

Rectory Lane, London, SW17



Ground Floor



First Floor

Total area (approx.): 87.12 sq. m (938 Sq. ft)