



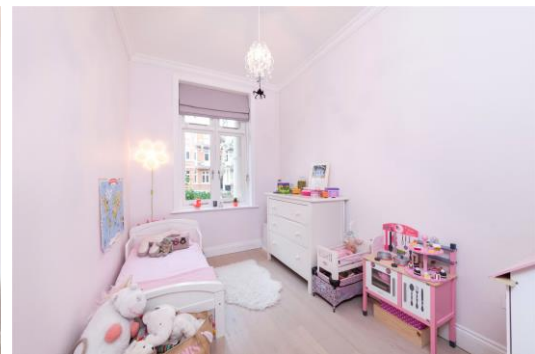
# Lauderdale Mansions

Lauderdale Road, W9

£4,250 per month  
(£980.77 per week)

An exceptional three bedroom flat on the raised ground floor of this beautiful mansion block, in the heart of Maida Vale. Finished to the highest standards throughout with excellent entertaining space & access to the lovely communal gardens.

**CHESTERTONS**



# Lauderdale Mansions

Lauderdale Road, W9

- Fantastic Mansion Block
- Spacious Reception With Underfloor Heating & Contemporary Kitchen
- Three Double Bedrooms & Two Modern Bathrooms
- Moments To Warwick Avenue Station

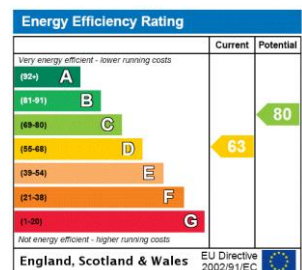


An exceptional three bedroom flat on the raised ground floor of this beautiful mansion block, in the heart of Maida Vale.

Finished to the highest standards throughout with excellent entertaining space & access to the lovely communal gardens, this property comprises of: Reception leading to contemporary integrated kitchen, large master bedroom with stylish en-suite, two further double bedrooms & family bathroom.

The property has underfloor heating throughout, high ceilings and an abundance of natural light throughout. Lauderdale Mansions is moments to Warwick Avenue underground & Lauderdale Parade

**Minimum Term:** 12 months  
**Deposit Required:** 6 weeks  
**Local Authority:** City Of Westminster  
**Council Tax Band:** F  
**EPC Rating:** D  
**Unfurnished**

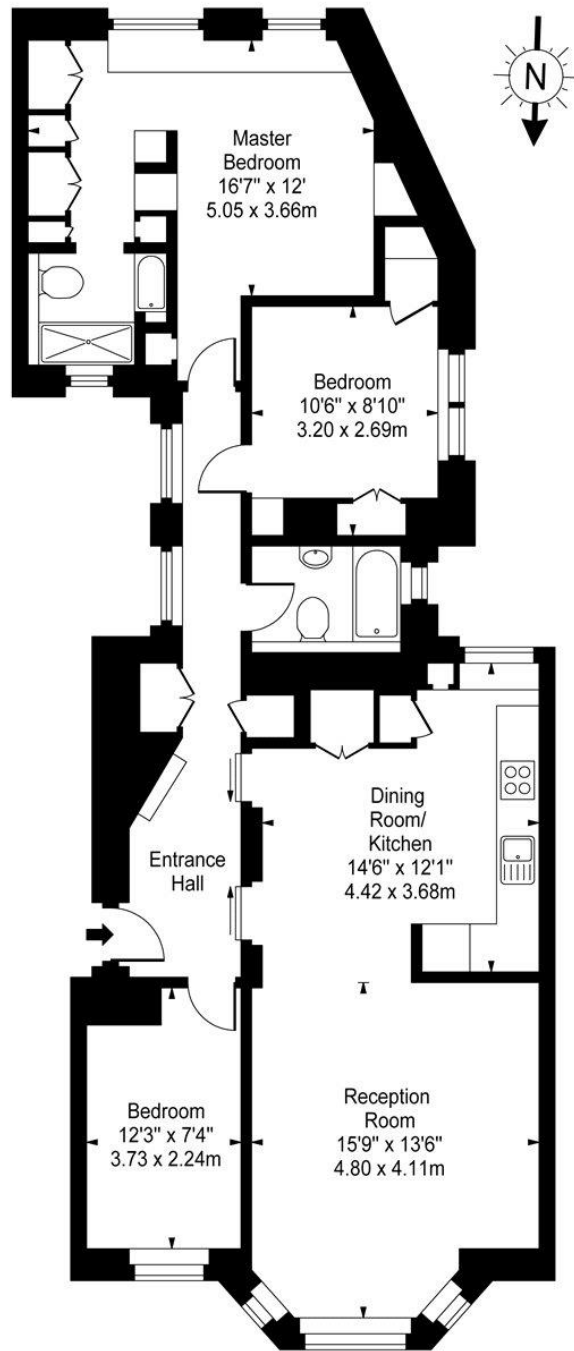


### *Chestertons Little Venice Lettings*

26 Clifton Road  
 Maida Vale  
 London  
 W9 1SX  
 littlevenicelettingsusers@chestertons.co.uk  
 02072662369  
 chestertons.co.uk

Additional tenant charges apply (fees apply to non-AST tenancies only)  
 Tenancy Agreement Fee: £300  
 References per Tenant/Guarantor: £60  
 Inventory check (approx. £100 – £250 inc. VAT)  
 chestertons.co.uk/property-to-rent/applicable-fees

# Lauderdale Mansions, W9



Raised Ground Floor

Approx Gross Internal Area **1005 Sq Ft - 93.36 Sq M**

For Illustration Purposes Only - Not To Scale

[www.goldlens.co.uk](http://www.goldlens.co.uk)

Ref. No. 002488

