



Smithdown Court  
Smithdown Lane |  
Liverpool | L7

---

# ***Exceptional freehold investment opportunity in the heart of Liverpool's thriving Knowledge Quarter.***

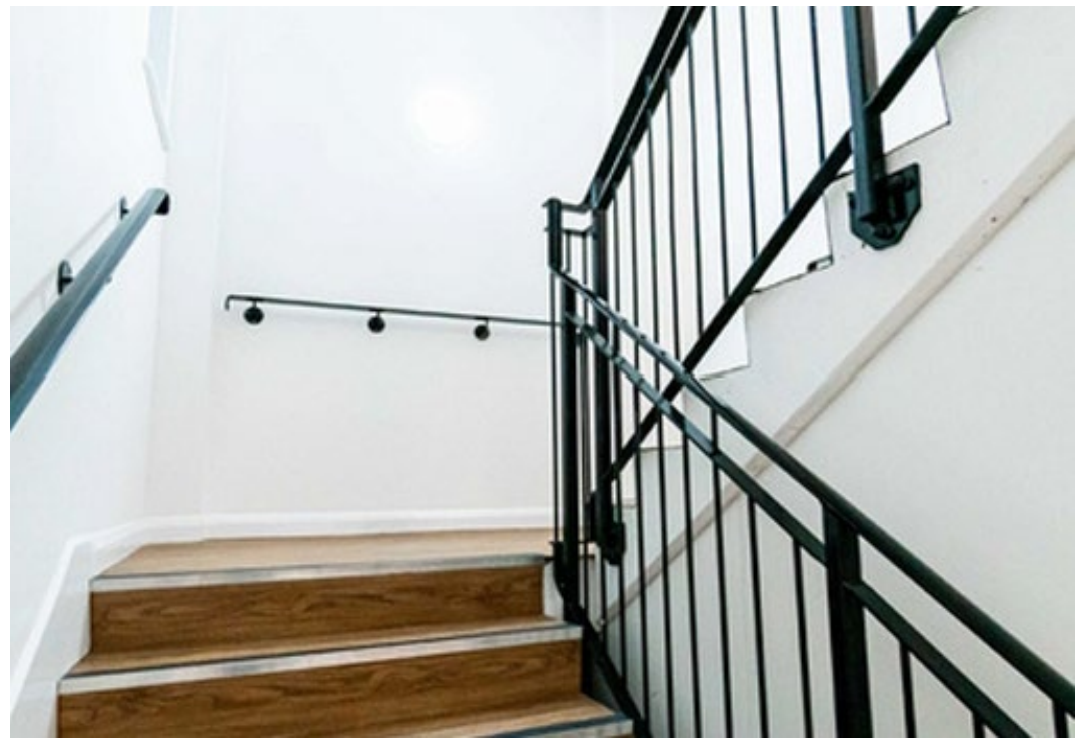
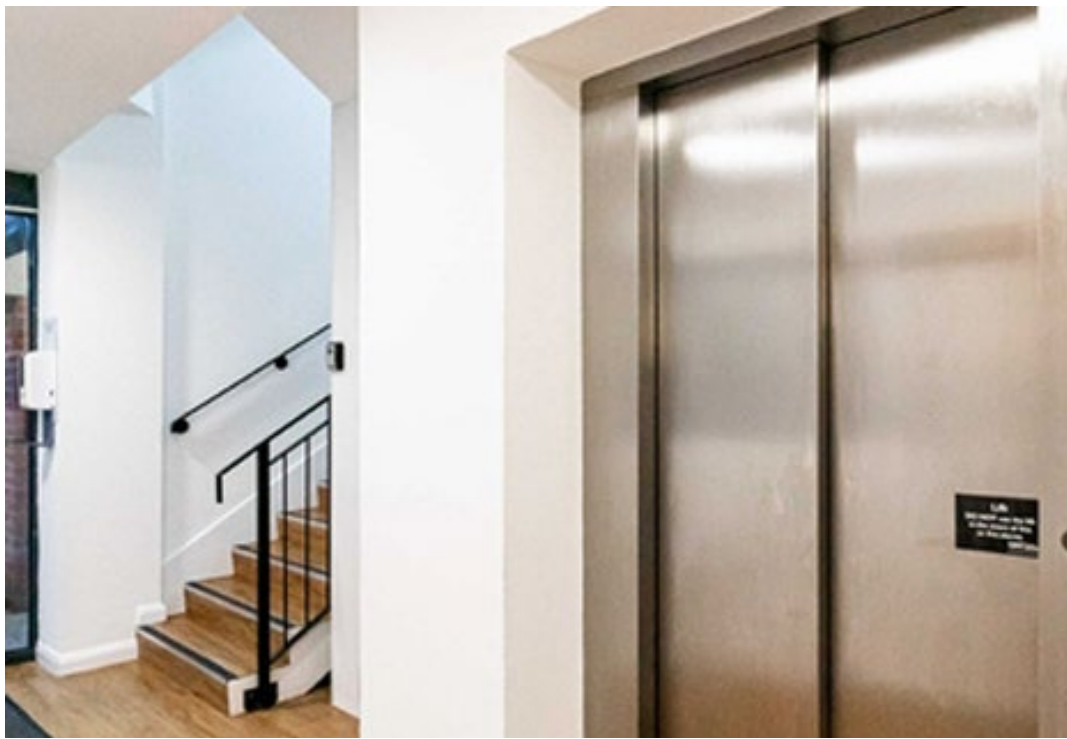
*10 Apartments | 61 En-Suite Rooms | 12 Parking Spaces | Great Location*

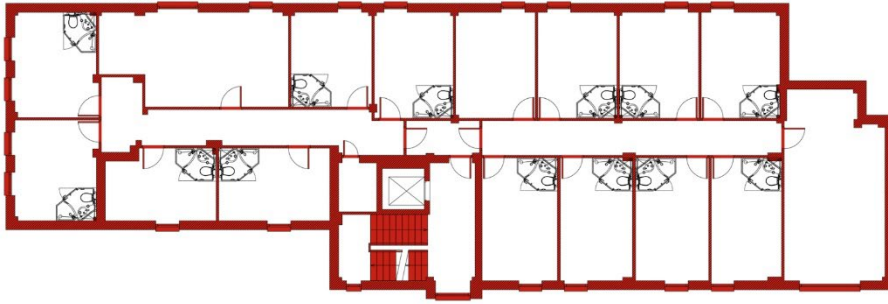
***Guide Price £5,000,000 | Freehold***

---

Exceptional freehold investment opportunity in the heart of Liverpool's thriving Knowledge Quarter. This substantial property comprises 10 self-contained apartments, offering a total of 61 en-suite bedrooms, together with 12 on-site parking spaces. Each apartment benefits from its own fully equipped kitchen and communal living area, making the property ideally suited for student accommodation, serviced accommodation, or Airbnb-style short-term lettings. Located within one of Liverpool's most sought-after rental locations, close to universities, hospitals, and major transport links, this asset presents significant income and growth potential. For further information or to arrange a viewing, contact the sole agents, Oliver & Akers, on 01727 580085.







First floor plan

## Oliver & Akers Estate Agents

Tytenhanger House, Courses Road, St Albans, Herts, AL4

01727 580085 | sales@oliverandakers.com | www.oliverandakers.com

Important Notice - These particulars have been prepared in good faith and they are not intended to constitute part of an offer or contract. We have not performed a structural survey on this property and the services, appliances and specific fittings have not been tested. All photographs, measurements, floor plans and distances referred to are given as a guide and should not be relied upon.

