



Taylor's
Est. 1992

Danvers Road, Mountsorrel, LE12 7JG
Loughborough

Offers Over
£280,000

Beautifully Renovated Detached Home in the Heart of Mountsorrel

If you're looking for a home that's already had the hard work done for you, this could be the one.

Set in an elevated position right in the heart of ever-popular Mountsorrel, this lovely bay-fronted semi-detached home has been renovated from top to bottom, blending character features with stylish modern living. Better still, you're just a short stroll from the village centre, supermarket, doctor's surgery and all the day-to-day essentials.

Step inside and you're greeted by a welcoming entrance hall leading to a cosy bay-fronted lounge, complete with a cast iron fireplace that's practically begging for winter evenings and a good box set.

To the rear sits the real showstopper - a fantastic open-plan kitchen diner. The kitchen features sleek high-gloss units, solid oak worktops and integrated appliances, while the dining area centres around a multi-fuel stove and French style doors opening onto the garden. It's the sort of space where everyone inevitably ends up during a party... despite your best efforts to keep them in the lounge.

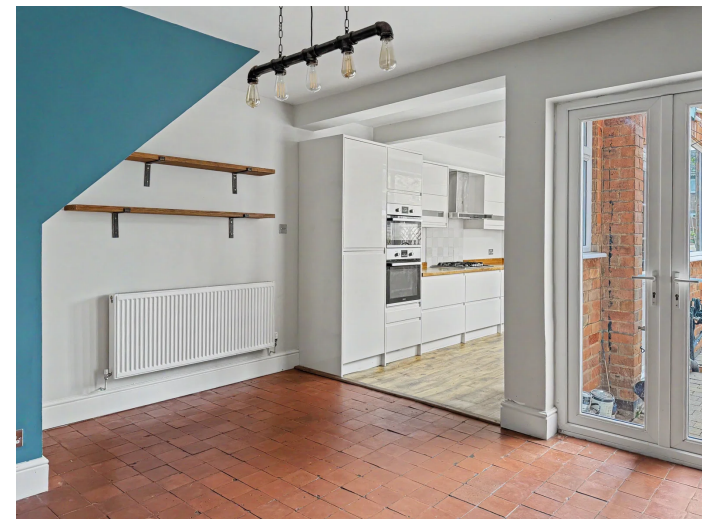
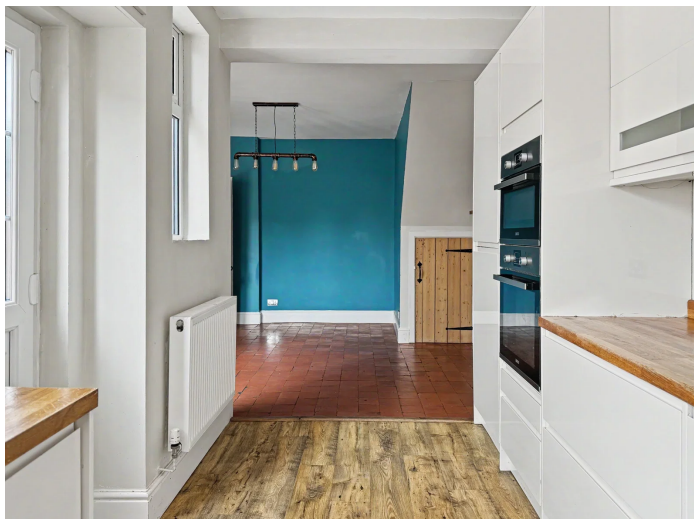
Upstairs you'll find two genuinely generous double bedrooms (yes, actual doubles, not estate agent doubles), including a principal bedroom enjoying elevated views to the front. The family bathroom is fitted with both a bath and separate shower, while a separate WC helps avoid those morning queues.

Outside, the property keeps on giving. The front garden is neatly presented with gated side access leading through to a substantial rear garden. Mature and well established, it offers an initial paved area, a shaped lawn and stone patio that's perfect for a morning coffee or an evening glass of something cold.

There are also useful brick-built outbuildings providing excellent storage or ideal for muddy boots, gardening enthusiasts or anyone who simply refuses to throw anything away "just in case".

With further potential to extend into the loft space (subject to the relevant permissions), this is a home that not only looks great now but offers exciting possibilities for the future too.

A fantastic character home, a great garden, a brilliant village location and great views, this is a home that





Beautifully renovated bay-fronted semi-detached home in the heart of Mountsorrel. Offering two double bedrooms, a stunning open-plan kitchen/dining room, character features throughout and a generous mature garden, with exciting potential to extend into the loft space (STPP).

- No Chain
- Stunning Renovated Bay-Fronted Semi-Detached Home
- Two Generous Double Bedrooms
- Contemporary Open-Plan Kitchen/Dining Room
- French Doors Opening onto Rear Garden
- Beautifully Presented Family Bathroom
- Stunning Garden
- Sought-After Mountsorrel Village Location
- Walking Distance to Shops, Cafés, Schools & Local Amenities
- Potential for Loft Conversion/Extension (STPP)

Council Tax Band: B

Tenure: Freehold

Property Type: Semi Detached House





Taylor's Estate Agency

4 Woodgate Rothley

0116 326 6464

hello@taylorsestate.agency

<https://taylorsestate.agency/>

