



Sunningfields Crescent, NW4

£450,000

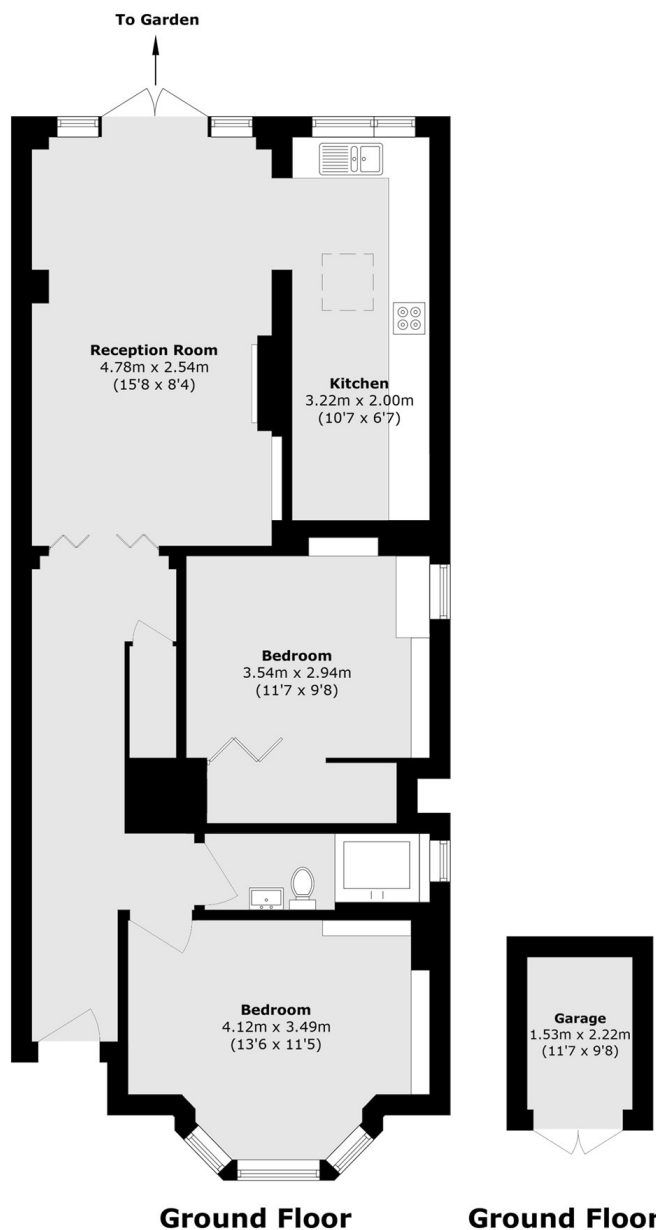
A spacious ground floor, two double bedroom maisonette. This beautiful flat is offered in great condition, with a private back garden and off street parking on the driveway facing Sunny Hill Park.

Sunningfields Crescent is ideally located facing Sunny Hill Park, within close access of Brent Street's shopping and transport facilities, and Hendon Central Underground Station.

Features

- Private Entrance
- Ground Floor
- Two Double Bedrooms
- Off Street Parking
- Private Garden
- Period Property

Sunningfields Crescent, Hendon, NW4



Total area (approx.): 80.6 sq. m (867.5 sq. ft)

Garage area (approx.): 3.39 sq. m (36.4 sq. ft)

Dexters

Hendon
18 Central Circus
London
NW4 3AS
Sales
020 8545 8586

Energy Rating: D. We aim to make our particulars both accurate and reliable. However they are not guaranteed; nor do they form part of an offer or contract. If you require clarification on any points then please contact us, especially if you're traveling some distance to view. Please note that appliances and heating systems have not been tested and therefore no warranties can be given as to their good working order.

 **RICS** | Regulated
Estate Agent
and Letting Agent

[dexters.co.uk](https://www.dexters.co.uk)