



Meadway Court, Hampstead Garden Suburb, NW11

Leasehold

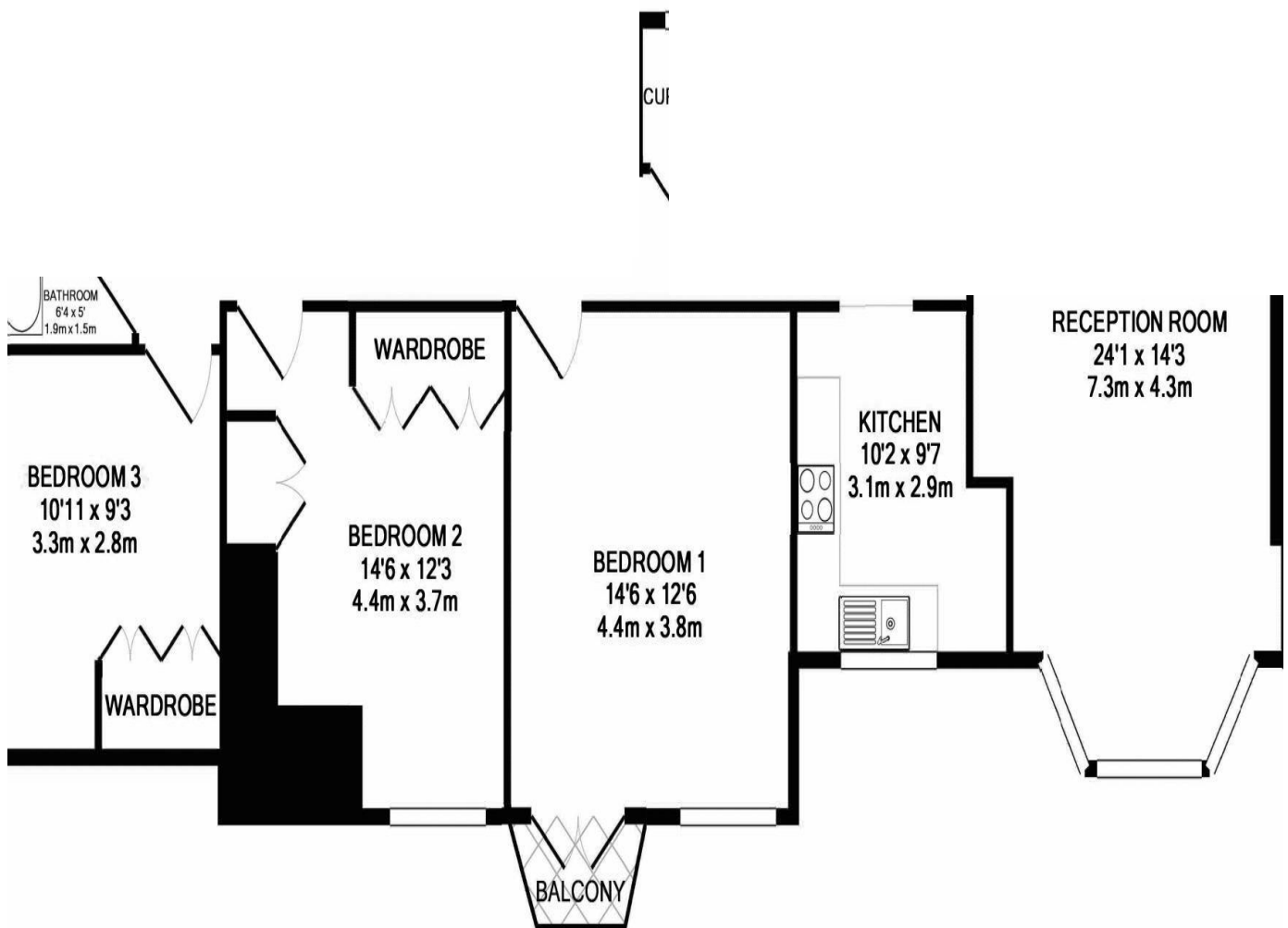
Offers in Excess of £375,000





ATTENTION CASH BUYERS AND INVESTORS. A super large first floor 3 bedroom flat offering over 1100ft². This popular Grade II listed block is arranged around a garden square being well placed within a short walk to the Heath Extension and to Golders Green tube. The property requires modernisation throughout and once done would make a charming home in an outstanding location. PLEASE NOTE THAT THERE IS 49 YEARS REMAINING ON THE LEASE Joint auctioneers with Allsop on 28th May unless previously sold.

3 Bedrooms | Reception Room | Kitchen | Bathroom | Shower Room | Communal gardens | 1st Floor | EPC=C | Call for open house times | EPC- C



23 MEADWAY COURT, MEADWAY, LONDON, NW11 6PN
 TOTAL APPROX. FLOOR AREA 1153 SQ.FT. (107.1 SQ.M.)

Whilst every attempt has been made to ensure the accuracy of the floor plan contained here, measurements of doors, windows, rooms and any other items are approximate and no responsibility is taken for any error, omission, or mis-statement. This plan is for illustrative purposes only and should be used as such by any prospective purchaser. The services, systems and appliances shown have not been tested and no guarantee as to their operability or efficiency can be given

Made with Metropix ©2019

For similar properties please visit our website www.litchfields.com

Or call us on 020 8458 5000