

## WESTVIEW CLOSE, HANWELL



£599,950

Tuffin & Wren are delighted to offer for sale a quite stunning, link-terrace family home tucked away in this quiet, yet very convenient cul-de-sac, overlooking the Brent Valley. The property has been extended, extensively remodelled and refurbished and now boasts smart, bright and very stylish accommodation that simply must be seen! Features include 2 double bedrooms, generous living spaces that are open-plan with a wonderful, integrated kitchen/dining room. Other benefits include the two stylish shower rooms one on each floor, a paved rear garden and handy off street parking to front.

# TUFFIN & WREN

*Independent Estate Agents*



## Further Information

For more details please call us on **020 8840 0993** or send an email to [homes@tuffin-wren.co.uk](mailto:homes@tuffin-wren.co.uk).

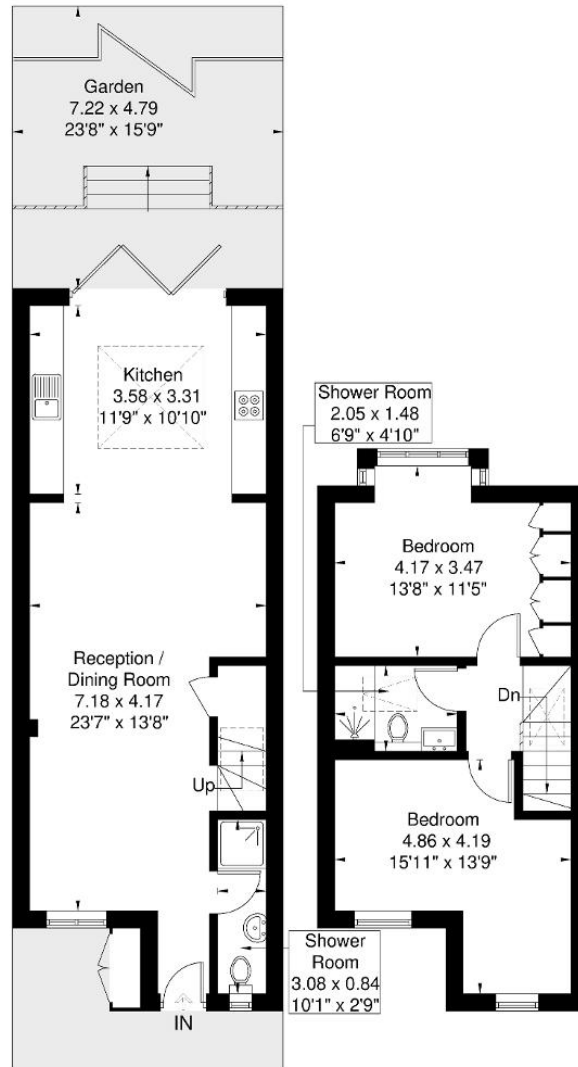
Please note it is not our company policy to test services, heating systems and domestic appliances, therefore we cannot verify that they are in working order. Prospective purchasers are advised to obtain verification from their solicitors and/or surveyors.

# TUFFIN & WREN

Independent Estate Agents

## Westview Close

Approximate Gross Internal Area = 81.7 sq m / 879 sq ft



Although every attempt has been made to ensure accuracy, all measurements are approximate.  
The floorplan is for illustrative purposes only and not to scale.  
© www.perspective.co.uk

Score	Energy rating	Current	Potential
92+	A		
81-91	B		87 B
69-80	C	75 C	
55-68	D		
39-54	E		
21-38	F		
1-20	G		