



Priory Road, Watton Thetford IP25 6PQ

welcome to

Priory Road, Watton Thetford

>> Attractive detached chalet house, ideally located in the heart of Watton, close to local schools, shops, and amenities. The property offers versatile accommodation, ample off-road parking with garage, and a generous rear garden featuring patio areas, mature shrubs and useful outbuildings.



Lounge

Carpet flooring, Multi fuel burner, Radiator, Fitted blinds, Double glazed window to the front aspect

Kitchen

LVT wood flooring, Double glazed window to the rear aspect, Double glazed sliding door to the rear aspect, Integrated fridge freezer and dishwasher, Induction hob, Double oven, Range of wall mounted low-level units, Quartz top worksurfaces, Large pantry with new consumer unit fitted, Space for low-level fridge freezer in pantry

Utility Room

Tiled flooring, glazed windows to the side and rear aspect, Space for washing machine and tumble dryer, Range of wall mounted low-level units, Complimentary rolled edge worksurfaces, recently replaced combi boiler and double glazed door to rear aspect

Conservatory

LVT wood flooring, Radiator, Double glazed UPVC windows to the rear aspect

First Floor Landing

Carpet flooring, Loft access

Bedroom One

Carpet flooring, Radiator, Double glazed window to the rear aspect, Fitted wardrobe, Vaulted ceilings

Bedroom Two

Carpet flooring, Radiator, Double glazed window to the front aspect, Fitted blinds

Bedroom Three

Wood effect flooring, Double glazed window to the front aspect, Radiator, Fitted blinds

Bedroom Four/Study

Carpet flooring, Radiator, Double glazed window to the side aspect

Bathroom

Vinyl flooring, Frosted double glazed window to the side aspect, double walk in shower cubicle, Low-level WC, Pedestal handwash basin, Free-standing bath, wall mounted hand towel rail

Office/Gym

Single glazing, Spotlights, Door to the side aspect

Shower Room

Tiled flooring, Frosted double glazed window to the front aspect Low-level WC, Pedestal, Handwash basin, Double shower cubicle, Wall-mounted heated towel rail

Garage

Electric roller door, Power and lighting

Outside

Rear garden laid to lawn with patio area, plum and cherry trees mature shrubs and vegetable beds. Stepped patio area with pergola, greenhouse, wooden shed with power and recently replaced fencing and side gate



view this property online williamhbrown.co.uk/Property/WAT109036

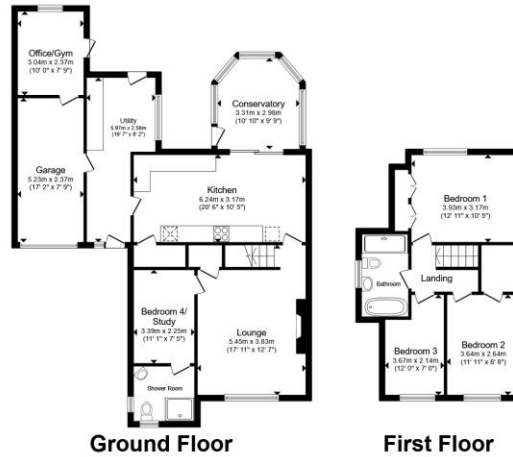


welcome to

Priory Road, Watton Thetford

- Spacious Four Bedroom Chalet House
- Downstairs bedroom with en-suite
- Conservatory
- Large Brick weave Driveway
- Garage

Tenure: Freehold EPC Rating: D
Council Tax Band: C



£375,000

Total floor area 143.0 m² (1,539 sq.ft.) approx
This floor plan is for illustrative purposes only. It is not drawn to scale. Any measurements, floor areas (including any total floor area), openings and orientation are approximate. No details are guaranteed; they cannot be relied upon for any purpose and they do not form part of any agreement. No liability is taken for any error, omission or misstatement. A party must rely upon its own inspection(s). Powered by www.propertybox.io



Please note the marker reflects the postcode not the actual property

view this property online [williamhbrown.co.uk/Property/WAT109036](https://www.williamhbrown.co.uk/Property/WAT109036)



Property Ref:
WAT109036 - 0006

1. MONEY LAUNDERING REGULATIONS Intending purchasers will be asked to produce identification documentation at a later stage and we would ask for your co-operation in order that there is no delay in agreeing the sale. 2. These particulars do not constitute part or all of an offer or contract. 3. The measurements indicated are supplied for guidance only and as such must be considered incorrect. Potential buyers are advised to recheck measurements before committing to any expense. 4. We have not tested any apparatus, equipment, fixtures or services and it is in the buyers interest to check the working condition of any appliances. 5. Where an EPC, or a Home Report (Scotland only) is held for this property, it is available for inspection at the branch by appointment. If you require a printed version of a Home Report, you will need to pay a reasonable production charge reflecting printing and other costs. 6. We are not able to offer an opinion either written or verbal on the content of these reports and this must be obtained from your legal representative. 7. Whilst we take care in preparing these reports, a buyer should ensure that his/her legal representative confirms as soon as possible all matters relating to title including the extent and boundaries of the property and other important matters before exchange of contracts.

william h brown



01953 881951



Watton@williamhbrown.co.uk



9 High Street, Watton, THETFORD, Norfolk,
IP25 6AB



[williamhbrown.co.uk](https://www.williamhbrown.co.uk)