



BRITISH
PROPERTY
AWARDS

2021
2024

★ ★ ★ ★ ★

GOLD WINNER

ESTATE AGENT
IN BARNET



£1,750 pcm

Golden Court, Park Road EN4

Bedrooms : 2

Bathrooms : 1

Reception Rooms : 1

**OPEN PLAN LIVING
FIRST FLOOR**

**TWO DOUBLE BEDROOMS
PARKING**

**CLOSE TO LOCAL AMENITIES
EASY ACCESS TO NEW
BARNET TRAIN STATION**

Mantlestates

2A Church Hill Road, East Barnet, EN4 8TB

office@mantlestates.com | 0208 275 1555

Website: <https://mantlestates.com/>



The flat is designed to maximise space and light, offering a welcoming environment for residents. The kitchen is well-equipped, providing all necessary appliances for daily living. The property includes parking facilities, ensuring ease of access for vehicle owners.

Golden Court is situated in Hertfordshire, EN4, a location that offers a blend of suburban tranquillity and urban convenience. Residents can enjoy easy access to local shops, cafes, and public transport options, making commuting and daily errands straightforward. The flat is part of a well-maintained building, contributing to a pleasant living experience.

The property's location in the United Kingdom offers access to a range of amenities and services. East Barnet is known for its community feel and proximity to green spaces, providing opportunities for outdoor activities.

This flat is an excellent choice for those seeking a practical and well-located residence in East Barnet, with convenient access to both local amenities and transport links.

ENTRANCE HALL: 14' 05" x 2' 10" (4.39m x 0.86m)

Entry phone, laminate floor, two storage cupboards.

LOUNGE: 14' 00" x 17' 00" (4.27m x 5.18m)

ACTUAL MEASUREMENTS - 14'00" > 7'09" X 17'00" > 11'08" Dual aspect double glazed windows to rear and side, two electric heaters, carpet, coving to ceiling

KITCHEN: 10' 00" x 5' 03" (3.05m x 1.60m)

Two double glazed windows to side aspect, wall and base units, electric cooker, electric oven, washing machine, stainless steel sink with drainer and mixer taps, fridge freezer.

BEDROOM: 12' 01" x 9' 03" (3.68m x 2.82m)

Double-glazed window to rear aspect, carpet, electric heater, storage cupboard.

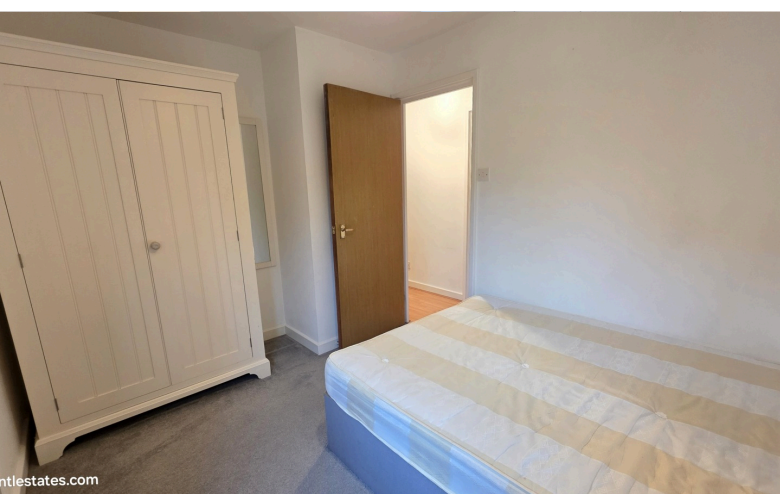
BEDROOM: 11' 02" x 8' 04" (3.40m x 2.54m)

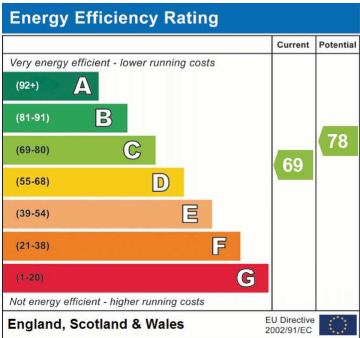
Double-glazed window to side aspect, carpet

BATHROOM: 6' 02" x 5' 06" (1.88m x 1.68m)

Low-level flush W/C, wash hand basin with mixer taps and vanity unit, walk in shower, tiled floors, tiled walls, heated towel rail.







Address: Golden Court, EN4





First Floor