

Church Leys, CM18 6DB
Harlow





Church Leys, CM18 6DB

Discover refined living - an elegant residence finished to an exceptional standard throughout. This beautifully appointed home offers generous, light-filled interiors, seamlessly blending contemporary design with a warm, inviting atmosphere. High-quality fixtures, stylish décor, and a thoughtfully designed layout create a sense of modern sophistication.

The ground floor hosts a spacious entrance hall fitted with mirrored storage and large window which overlooks the stunning open plan living/dining area, a second kitchen, downstairs WC plus a 6th bedroom/study/playroom.

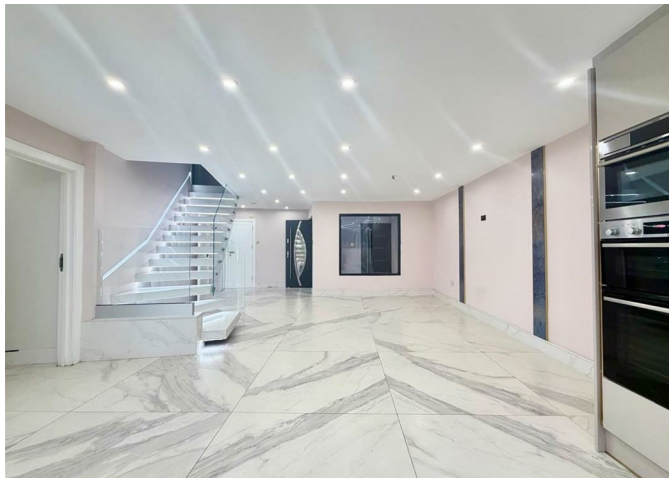
Outside, the private garden provides a tranquil space for relaxation or entertaining. The garden also offers an outbuilding fitted with a gym, bar and toilet. The garden also offers an outdoor tap with hot and cold water.

With 5 bedroom located upstairs - some of which are fitted with wardrobes and floating style built in beds.

Perfectly positioned close to premium local amenities and excellent transport links - parking for 1 car on the drive located at the front of the property, also offering a locked storage area for bins and parcels.

Enquire today to book into our open day.

£2,600 Per Month



- **AVAILABLE NOW**
- **2 kitchens**
- **6 bedrooms**
- **Outbuilding gym/bar**
- **EPC Rating C**

- **High standard luxurious interior**
- **3 bathrooms**
- **Large garden**
- **Council tax band C**
- **Located near excellent schools**







