



TOOTING BEC ROAD, SW17

£2,950 per month

Two Bedrooms
Split Level Flat
Immaculately Presented
Ideal Location
Transport Links
853 Sq. Ft.

@marshandparsons
marshandparsons.co.uk

MARSH &
PARSONS



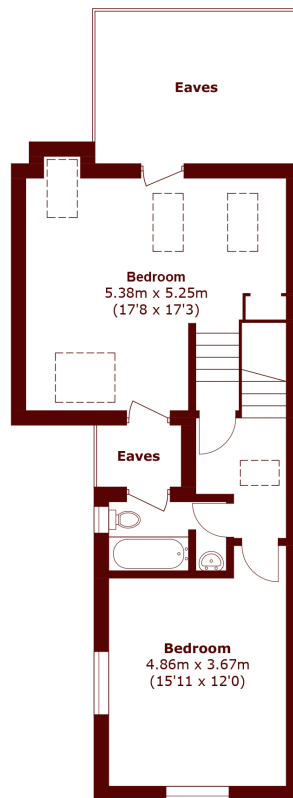
ABOUT THE PROPERTY

This gorgeous two bedroom flat is split over two levels and immaculately presented throughout. The ground floor comprises one double bedroom, a beautifully decorated bathroom, separate kitchen and living room with space for dining. The first floor includes a generously sized second double bedroom that can be also used as a second reception room/cinema room.

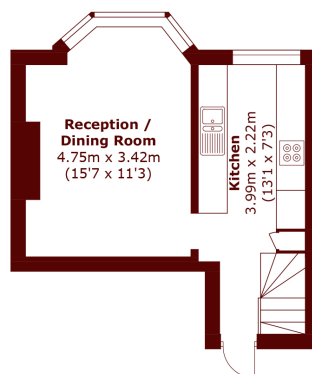
Situated a short walk from the shops, cafés and restaurants of both Tooting and Balham and the green open spaces of Tooting Bec Common, the running track and the lido. Transport links are excellent with the Northern Line at Tooting Bec (Northern line, Zone 3) just a short stroll away and overground trains running from



STEP INSIDE TOOTING BEC ROAD



First Floor



Ground Floor

Total area (approx.): 79.2 sq. m (852.5 sq. ft)
(Excluding Eaves)

Tooting
020 8772 9210

Energy Rating: C We aim to make our particulars both accurate and reliable. However, they are not guaranteed; nor do they form part of an offer or contract. If you require clarification on any points then please contact us, especially if you're traveling some distance to view. Please note that appliances and heating systems have not been tested and therefore no warranties can be given as to their good working order

**MARSH &
PARSONS**