

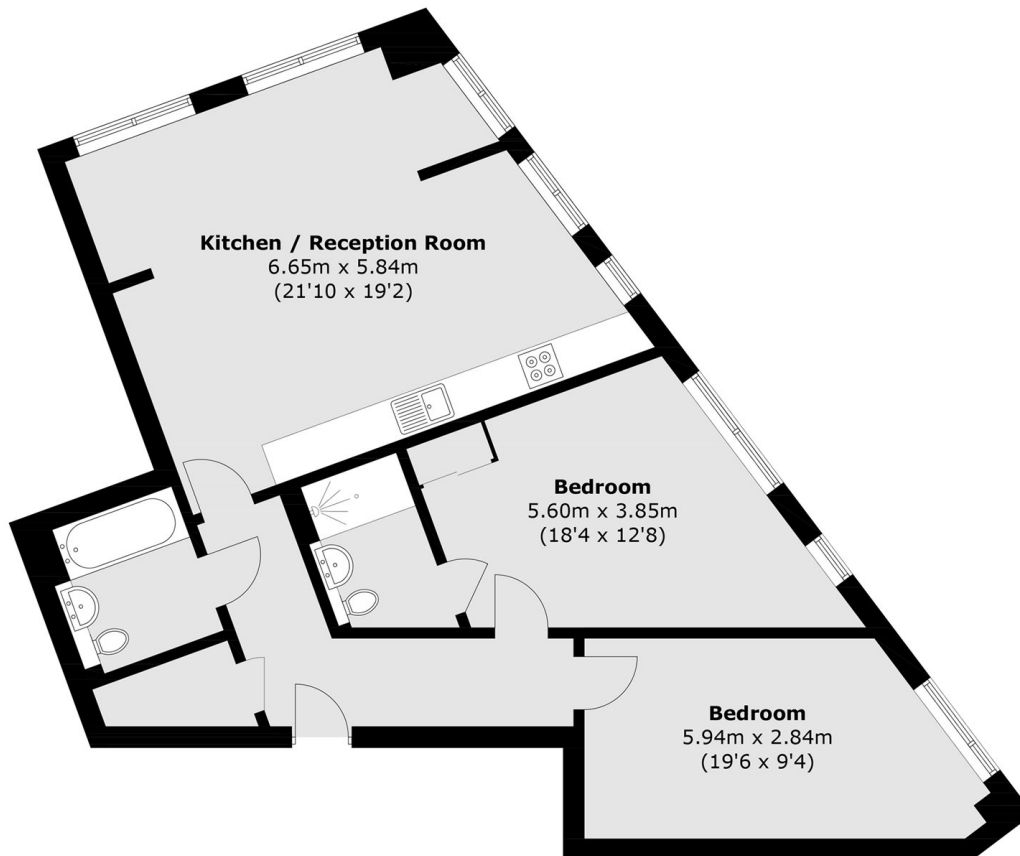


SKY VIEW TOWER, E15

£460,000

2 bedroom, 2 bathroom, 753 sq/ft. Apartment. The Capital Towers development comprises of the 14-level City West Tower and 34-level Sky View Tower, together making up a landmark collection of 191 all private luxury residences.

- 24 HR Concierge
- Gym
- Service Charge : £400
- Ground Rent: £2,300



Total area (approx.): 85.4 sq. m (919.2 sq. ft)

LiFE RESIDENTIAL

16 Royal Crest Avenue,
London, E16 2TQ
Sales: 020 3846 3332
Lettings: 020 3846 3311

Energy Rating: . We aim to make our particulars both accurate and reliable. However they are not guaranteed; nor do they form part of an offer or contract. If you require clarification on any points then please contact us, especially if you're traveling some distance to view. Please note that appliances and heating systems have not been tested and therefore no warranties can be given as to their good working order.