



FLAT 4, 2 DOURO ROAD, CHELTENHAM, GLOUCESTERSHIRE, GL50 2PQ

A VERY SPACIOUS TOP FLOOR APARTMENT SET WITHIN THIS NOTABLE VILLA IN LANSDOWN COMMANDING A FAR REACHING VIEW. IT OFFERS THREE BEDROOMS AND A LARGE RECEPTION ROOM OVERLOOKING THE GARDEN.

THE APARTMENT

Douro Road is without doubt one of the most sought after premier addresses in Lansdown. The apartment is located on the second floor within this notable Grade II listed period villa and has been refurbished by the current vendor with the attention to detail notably high.

ACCOMODATION

On entering the apartment the hall provides access off to all rooms. The main reception room is L-shaped and is a lovely place to relax. Blessed with natural light and a view over the communal garden. It has a fireplace with inset living flame stove.

The kitchen is fitted with a range of units and space for free standing appliances and has a counter bar for socialising and dining.

BEDROOMS

There are 3 double bedrooms, 2 with fitted wardrobes, sharing a bright shower room. The principle bedroom has a very smart ensuite bathroom.

OUTSIDE

The apartment has allocated parking to the front of the building and full use of the walled communal garden.

LEASEHOLD INFORMATION

Tenure: Leasehold

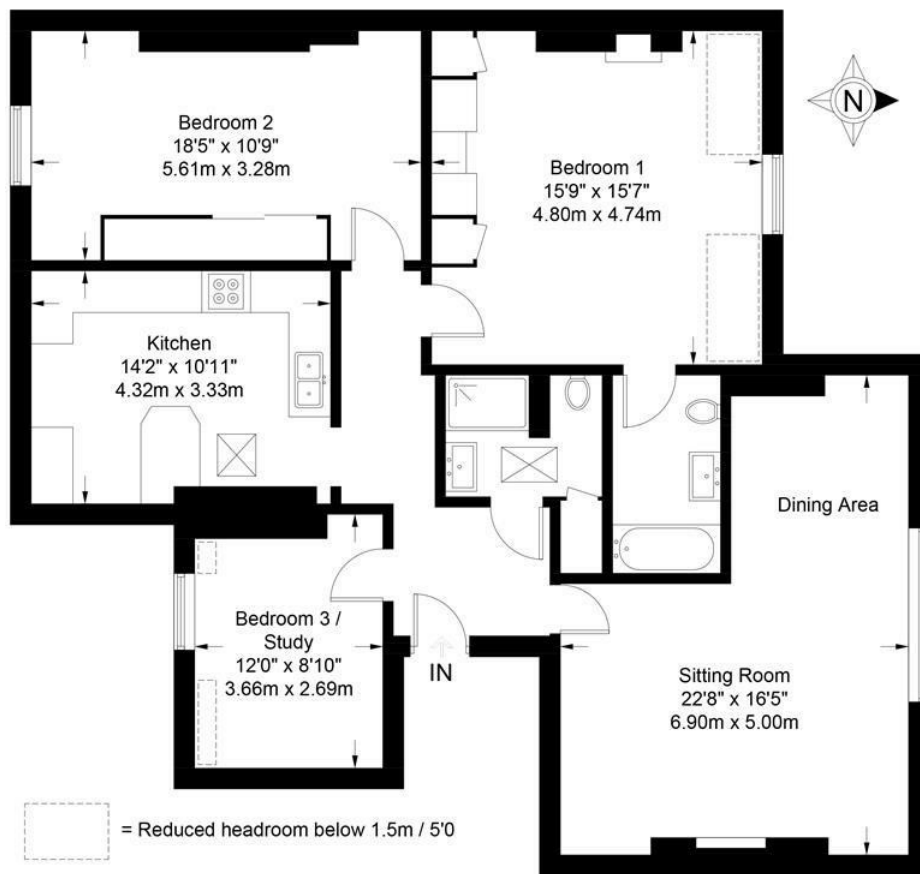
Lease: 125 years from 2024

Service Charge: £3154.48 p.a. for 2025/26.

Ground Rent: £100.00 p.a







Approximate Gross Internal Area = 1246 sq ft / 115.8 sq m

Illustration for identification purposes only, measurements are approximate and are not to scale.
Please check all details before making any decisions reliant upon them.
Copyright Read Maurice. (ID1268904)



EPC: Band E

Rating: 46

Council Tax: D

Area: 1248.00 sq ft

readmaurice 

48 Andover Road, Cheltenham, GL50 2TL

Tel: 01242 241122

Email: post@readmaurice.co.uk

www.readmaurice.co.uk

FLAT 4, 2 DOURO ROAD, CHELTENHAM, GLOUCESTERSHIRE, GL50 2PQ

These particulars, whilst believed to be accurate are set out as a general outline only for guidance and do not constitute any part of an offer or contract. Intending purchasers should not rely on them as statements or representation of fact, but must satisfy themselves by inspection or otherwise as to their accuracy. We have not carried out a detailed survey nor tested the services, appliances and specific fittings. Room sizes should not be relied upon for carpets and furnishings. The measurements given are approximate. No person in this firm's employment has the authority to make or give any representation or warranty in respect of the property. PRN: 19524565 - Date of printing 7th February 2026