



## Limpsfield Avenue, CR7

£2,600 Per calendar month

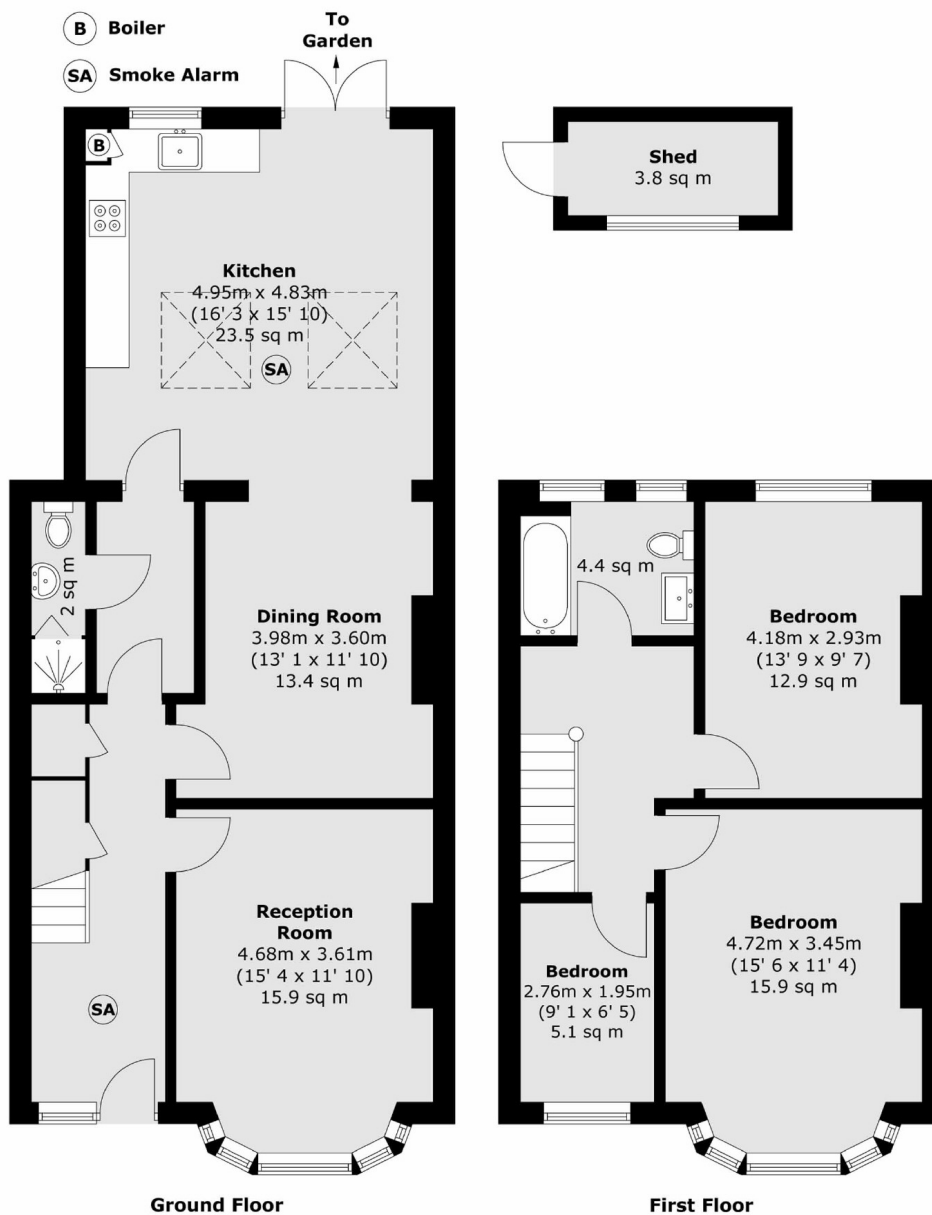
A newly refurbished three bedroom house finished to an impeccable standard throughout. This property benefits from a double reception room, modern kitchen and private garden.

The property is situated in a residential road in Thornton Heath, within close proximity to Thornton Heath Station which has direct links to London Victoria and London Bridge.

### Features

House  
Three Bedrooms  
Double Reception Room  
Modern Kitchen  
Private Garden  
Ideal Location

# Limpsfield Avenue, Thornton Heath, CR7



Total area (approx.) : 120.3 sq. m (1295 sq. ft)  
Total shed area (approx.) : 3.8 sq. m (41 sq. ft)

## Dexters

Norbury  
1341 London Road  
Norbury  
SW16 4BE  
Lettings  
020 8629 8029

Energy Rating: C. We aim to make our particulars both accurate and reliable. However they are not guaranteed; nor do they form part of an offer or contract. If you require clarification on any points then please contact us, especially if you're traveling some distance to view. Please note that appliances and heating systems have not been tested and therefore no warranties can be given as to their good working order.

**RICS** Regulated  
Estate Agent  
and Letting Agent

dexters.co.uk