



Belmont Street | Chalk Farm | London | NW1

Asking Price - £10,400 Per month



- Spacious 4 bedrooms
- 2 large reception rooms
- 2917 sq ft of space
- Close to schools and parks
- Viewing highly recommended
- 4 modern bathrooms
- Detached house on Belmont St
- Prime London location
- Easy access to transport

Nestled in the desirable area of Belmont Street, London, this stunning detached house offers a perfect blend of modern living and spacious comfort. The property boasts an impressive 2,917 square feet of living space, making it an ideal choice for families or those who enjoy entertaining.

Upon entering, you are greeted by two elegantly designed reception rooms that provide ample space for relaxation and social gatherings. The layout is thoughtfully arranged, allowing for both privacy and connectivity throughout the home. With four generously sized bedrooms, each with its own ensuite bathroom, this residence ensures that everyone has their own personal sanctuary.

The contemporary design and high quality finishes throughout the house reflect a commitment to luxury and style. The bathrooms are equipped with modern fixtures, providing a spa like

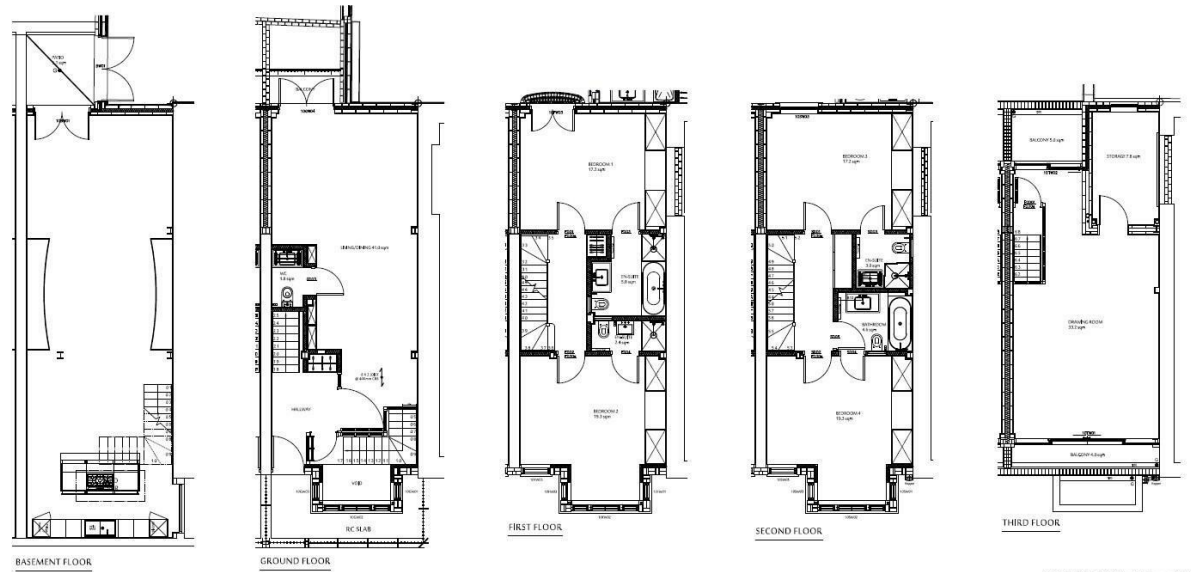




experience in the comfort of your own home. The spacious bedrooms offer plenty of natural light, creating a warm and inviting atmosphere.

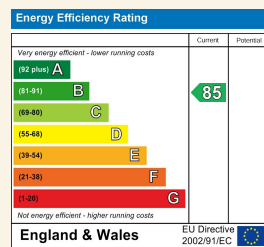
The location in London provides easy access to local amenities, schools, and transport links, making it convenient for daily living. Whether you are looking to enjoy the vibrant city life or seeking a peaceful retreat, this home caters to all your needs.

This exceptional detached house on Belmont Street is a rare find, combining modern elegance with practical living spaces. It is a perfect opportunity for those seeking a luxurious family home in one of London's most sought after areas.



BASEMENT FLOOR: 65.2 sqm / 702 sqft
 GROUND FLOOR: 56.7 sqm / 610 sqft
 FIRST FLOOR: 56.5 sqm / 608 sqft
 SECOND FLOOR: 56.5 sqm / 608 sqft
 THIRD FLOOR: 36.1 sqm / 389 sqft
Total: 271.0 sqm / 2917 sqft

Council Tax Band **H** EPC Rating **B**



24 Bristol Gardens
 London
 W9 2JQ
 hello@draperlondon.com
 0203 143 1900