



King Street, Covent Garden, WC2E  
*£750 pw*

> 1 Bedroom > 1 Bathroom > Furnished

**TAVISTOCKBOW**  
RESIDENTIAL



- › One bedroom
- › One shower room
- › Second floor (walk-up)
- › Open plan kitchen
- › High ceilings
- › Furnished
- › Bedrooms with views to St Pauls Church Gardens
- › Wifi installed and can be included in rent
- › Available mid June
- › Close to Covent Garden tube station

Situated on the second floor of an elegant period building on one of Covent Garden's most desirable streets, this one bedroom apartment has been interior designed to a fantastic standard and features high ceilings, classic sash windows, a beautiful kitchen & modern shower room. The open plan living room looks on to King Street with the bedroom to the rear of the property overlooking the

tranquil St Pauls Church Gardens . Available mid June on a furnished basis, 1 to 3 year contract, straight or with a minimum 6 months mutual break clause as negotiated.

Council tax band F

King Street is one of Covent Garden's most sought after addresses and benefits from being fully pedestrianised for 20 hours a

day. Multiple transport options are within easy reach, including Covent Garden (Piccadilly line – 49 minutes to Heathrow), Leicester Square (Piccadilly and Northern lines) and Charing Cross (National Rail, Northern and Bakerloo lines) stations.

Leading to the Piazza and historic Market Building, the street plays host to a variety of luxury retail brands





including Ralph Lauren, Sandro and Hackett, with others such as Apple, Glossier, Chanel and Dior in the immediate vicinity. A choice of coffee shops and delis can be found within a 100m radius of the flat, along with award winning restaurants such as Clos Maggiore, La Goccia, Oystermen, Sushi Samba and Frenchie. There are also 5 gyms within a 5 minute walk.

The Covent Garden Estate is a globally recognised destination situated in London's West End, within striking distance of Soho, Oxford Street and South Bank. Although in the heart of this vibrant part of central London, the Estate is pedestrianised for 20 hours a day, making it a clean, safe and inviting environment in which to live. Actively managed to a world class standard, all buildings on the Estate are maintained to the highest standard, both internally and externally, with particular care and attention given to the public realm and greening. This is all supported by an onsite team of cleaners, gardeners and 24 hour a day security, while the Estate facilities and property management teams are also based on site.

#### **WHAT WE LOVE:**

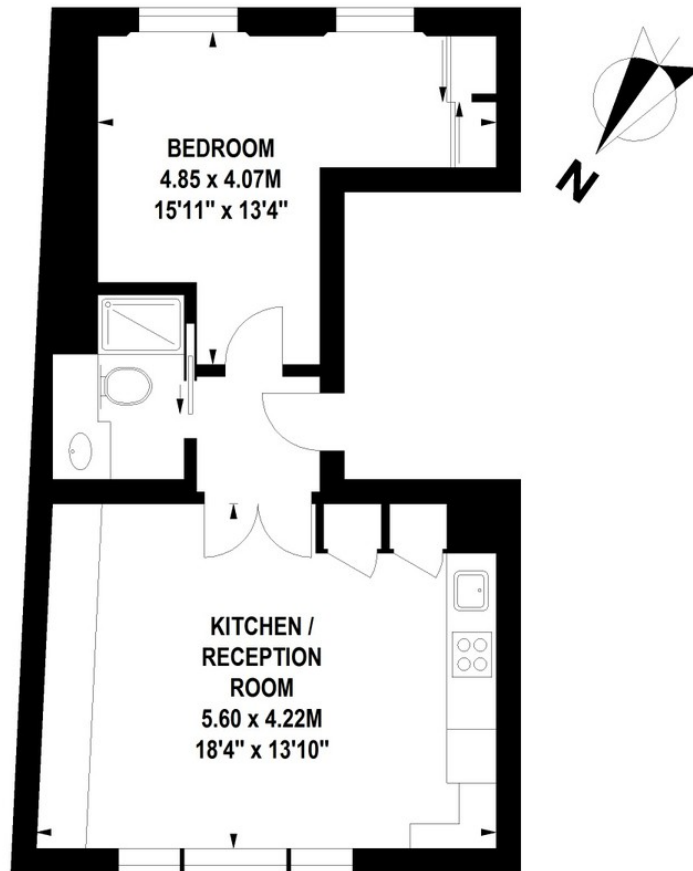
- Beautifully furnished
- Opposite the fantastic Petersham Nurseries & Deli
- Great ceiling height
- Bedroom overlooks St Pauls Church Gardens
- Seconds from the Piazza.

#### **WHAT YOU NEED TO KNOW:**

- Open plan living space
- 2nd Floor
- Walk Up
- Secondary Glazing
- 24 hour security office close by.

## King Street, WC2

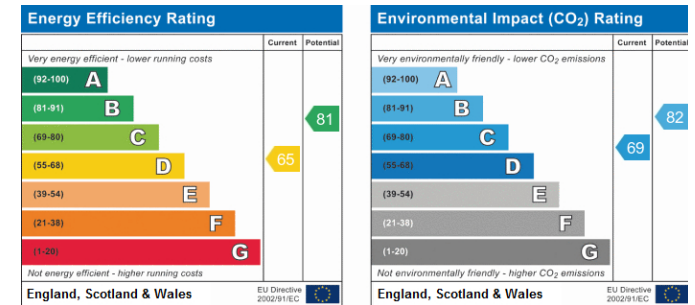
Approximate Gross Internal Area 43 sq m / 463 sq ft



### Second Floor

Floor Plan produced for Tavistock Bow by Mays Floorplans © . Tel 020 3397 4594  
Illustration for identification purposes only, not to scale  
All measurements are maximum, and include wardrobes and window bays where applicable


## EPC





## About Us

Tavistock Bow is an independent residential agency based in Covent Garden. We are niche, boutique, creative, knowledgeable, professional and approachable. We love what we do and that's why we do it.

## Contact Us

- a.** 21 New Row, Covent Garden, WC2N 4LE
  - t.** 020 7477 2177
  - e.** hello@tavistockbow.com
  - w.** tavistockbow.com
-   
[/tavistockbow](#)

  
[/tavistockbow](#)

  
[@tavistockbow](#)