

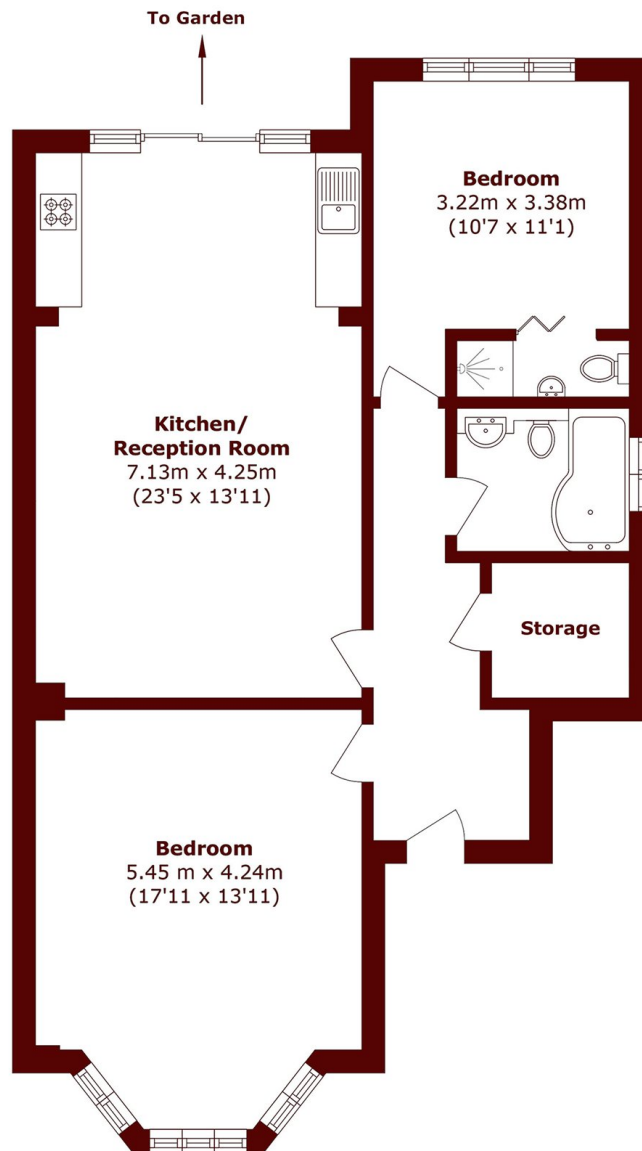


## Lyndale Avenue, NW2

£2,345 pcm



- Two Double Bedroom
- Ground Floor Flat
- Garden Flat
- Two Bathroom
- High Ceilings
- Close to High Street



Total area (approx.): 83.4 sq. m (897.7 sq. ft)

## Marsh & Parsons Queens Park

56 Salusbury Road, London,  
NW6 6NN  
020 7624 4513