



RENA ANDRONICOU

exp

2 Lodgefields Drive, £220,000

🛏 2 🚿 2 🚗 1

- Semi Detached Dormer Bungalow
- Large Driveway
- Outbuilding
- Two Bathrooms
- Modern
- Conservatory
- Eclosed Garden
- No Chain
- Freehold
- Epc Rating D

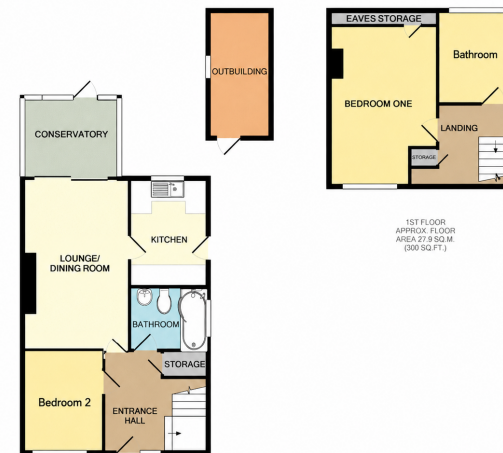


Two bedroom dormer bungalow with outbuilding and expansive driveway, beautifully presented and modernised.

This charming semi-detached dormer bungalow offers comfortable and contemporary living spaces, perfectly suited for those seeking a stylish and convenient residence. The property immediately impresses with its modern and thoughtful design.

Situated in a desirable location with Queens park being a short walk away, close to Leighton Hospital and Bentley Motors, this home offers easy access to local amenities and transport links. Discover the blend of modern comfort and convenience this delightful dormer bungalow provides. Arrange a viewing today!





GROUND FLOOR
APPROX. FLOOR
AREA 97.2 SQ.M.
(915 SQ.FT.)

TOTAL APPROX. FLOOR AREA 85.0 SQ.M. (915 SQ.FT.)

While every attempt has been made to ensure the accuracy of the floor plan contained herein, measurements of doors, windows, rooms and any other items are approximate and no responsibility is taken for any error, omission, or misstatement. This plan is for illustrative purposes only and should be used as such by any prospective purchaser. The services, systems and appliances shown have not been tested and no guarantee as to their condition or efficiency can be given.
Made with Metropix (2019)



| Energy Efficiency Rating | | |
|--|----------------------------|-----------|
| | Current | Potential |
| <i>Very energy efficient - lower running costs</i> | | |
| (92 plus) A | | |
| (81-91) B | | 86 |
| (69-80) C | | |
| (55-68) D | 58 | |
| (39-54) E | | |
| (21-38) F | | |
| (1-20) G | | |
| <i>Not energy efficient - higher running costs</i> | | |
| England & Wales | EU Directive 2002/91/EC | |

RENA ANDRONICOU

exp