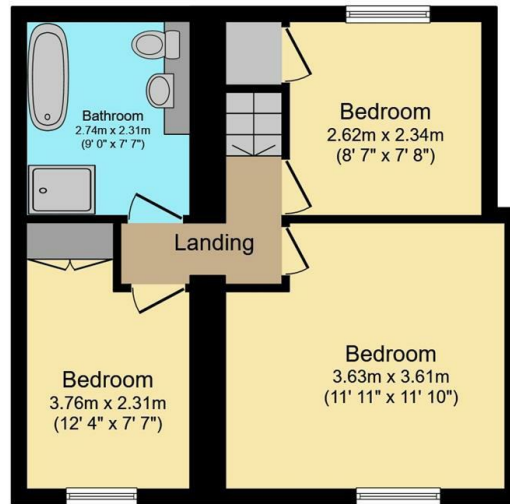
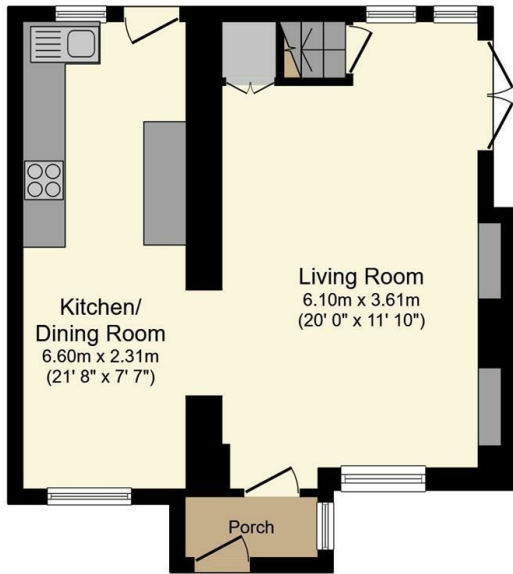




297 Lydgate Lane, Sheffield, S10 5FR

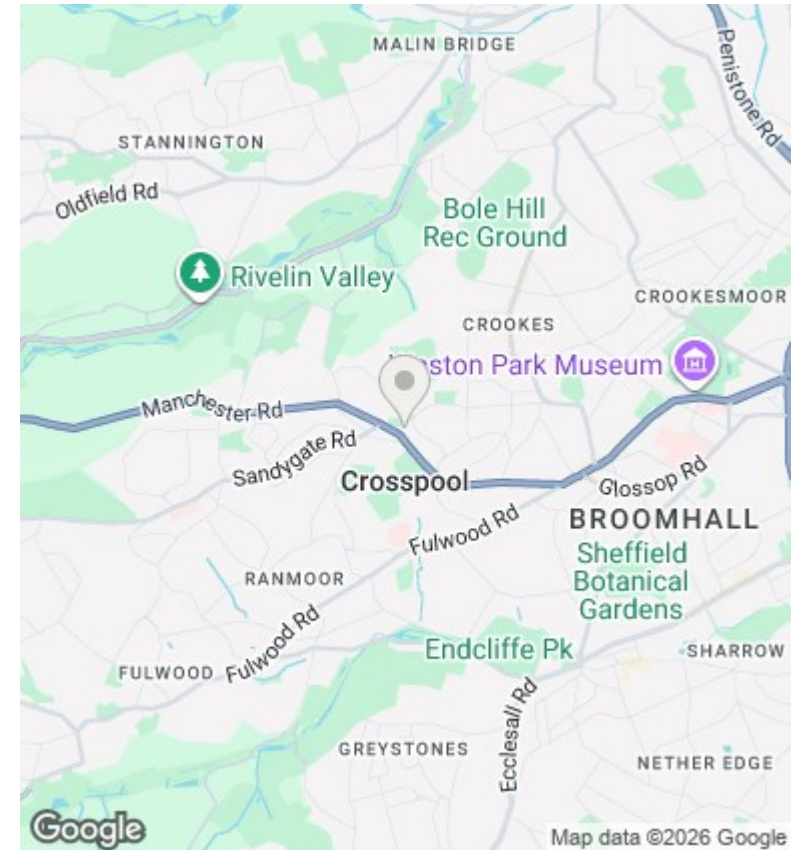
Offers Over £400,000

- Complete chain above
- Cosy living room with woodburner
- Useful loft space
- Short walk to local shops, cafes and restaurants
- Cottage dating back to 1820's
- Three bedrooms
- Private and enclosed south facing garden
- Beautiful finish inside
- Spacious modern bathroom
- Off street parking



Total floor area: 88.4 sq.m. (951 sq.ft.)

This floor plan is for illustrative purposes only. It is not drawn to scale. Any measurements, floor areas (including any total floor area), openings and orientations are approximate. No details are guaranteed, they cannot be relied upon for any purpose and do not form any part of any agreement. No liability is taken for any error, omission or misstatement. A party must rely upon its own inspection(s). Powered by www.Propertybox.io



Directions

Viewings

Viewings by arrangement only. Call 01142 687777 to make an appointment.

Council Tax Band

B

EPC Rating:

D

Energy Efficiency Rating		Current	Potential
<i>Very energy efficient - lower running costs</i>			
(92 plus)	A		
(81-91)	B		87
(69-80)	C		
(55-68)	D	58	
(39-54)	E		
(21-38)	F		
(1-20)	G		
<i>Not energy efficient - higher running costs</i>			
England & Wales		EU Directive 2002/91/EC	