



## Cromwell Road, SW7

£600 Per week

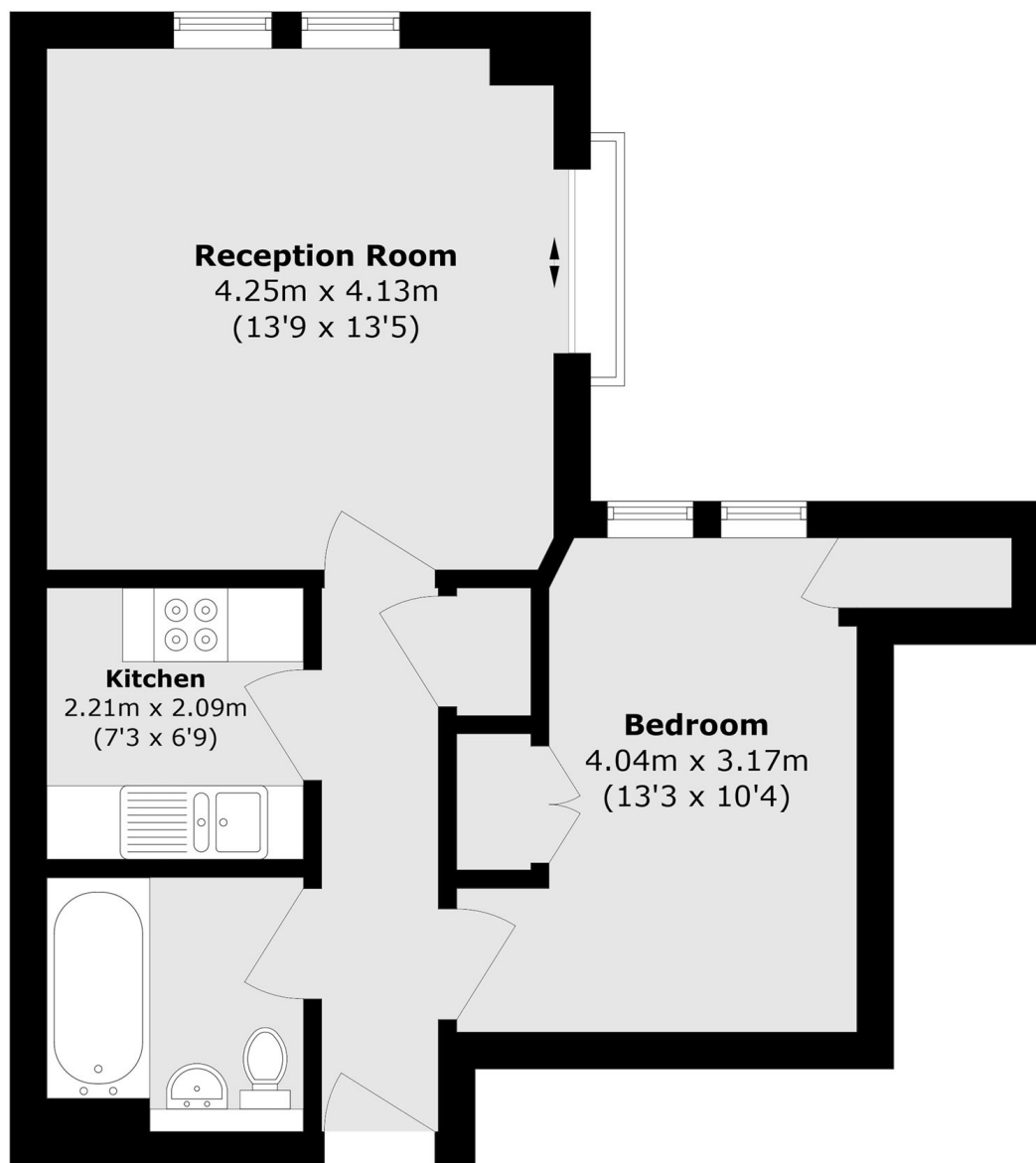
A well-maintained one bedroom property on the ninth floor of a portered building. The property has a private balcony, a separate kitchen and secure underground parking.

The property is conveniently located a few minutes' walk from Gloucester Road Station, with shops such as Waitrose and Sainsbury's within easy reach, and is also close to Hyde Park.

### Features

- Spacious Double Bedroom
- Ninth Floor (Lift Access)
- Modern Kitchen
- Private Balcony
- 24-hour Porter
- Underground Parking

# Cromwell Road, London, SW7



## Ninth Floor

Total area (approx.): 46.4 sq. m (499.4 sq. ft)