

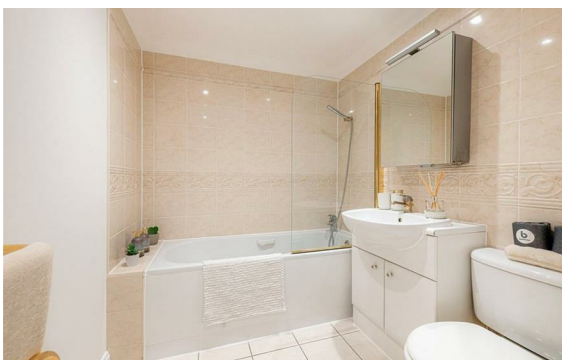


Allsop Place, Marylebone, London, NW1

Rent £1,065 PCM

2 Bed | 2 Bath | 1 Reception

*Please call us on 020 7724 2233 or email us [info@newingtonstates.com](mailto:info@newingtonstates.com) to book a viewing.*



A spacious and newly refurbished Unfurnished two-bedroom apartment offering modern interiors and a well-balanced layout in a prime central London location. The property features a bright reception room, a large fully fitted kitchen, and two well-proportioned bedrooms. The principal bedroom benefits from an en-suite bathroom, complemented by a separate shower room.

Ideally located close to Oxford Street and Marylebone High Street, with excellent transport links via Baker Street Station and Marylebone Station. The open green spaces of Regent's Park are also within easy reach.

EPC Rating: B

## Energy Efficiency Rating: D

Agents Note: Whilst every care has been taken to prepare these particulars, they are for guidance purposes only. All measurements are approximate and are for general guidance purposes only and whilst every care has been taken to ensure their accuracy, they should not be relied upon and potential buyers/tenants are advised to recheck the measurements.

**NEWINGTON**  
— ESTATES —

60 Upper Montagu Street

London

W1H 1SN

020 7724 2233

[info@newingtonestates.com](mailto:info@newingtonestates.com)

<http://www.newingtonestates.com>