



JUSTIN CLOSE, TW8

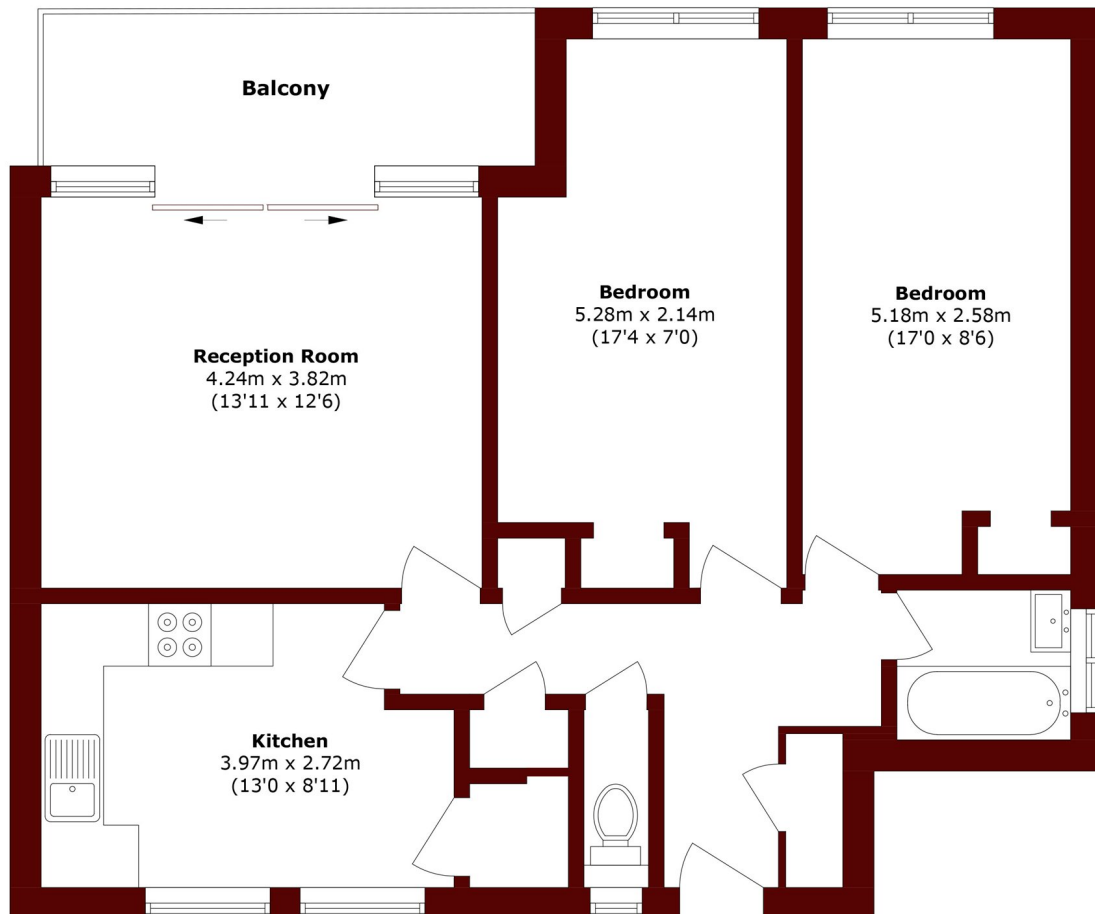
£2,200 per month

A stunning newly refurbished two-bedroom apartment in the sought-after Marcus Court, Brentford Dock.

Two bedrooms
Direct river views
Modern interior

Allocated parking
Some bills included
Energy rating: d

STEP INSIDE JUSTIN CLOSE



Total area (approx.): 69.9 sq. m (752.4 sq. ft)

Balcony area (approx.): 7.2 sq. m (77.5 sq. ft)

Chiswick
020 8629 0900

Energy Rating: D We aim to make our particulars both accurate and reliable. However, they are not guaranteed; nor do they form part of an offer or contract. If you require clarification on any points then please contact us, especially if you're traveling some distance to view. Please note that appliances and heating systems have not been tested and therefore no warranties can be given as to their good working order

MARSH &
PARSONS