



Stuart Tower

, Maida Vale, W9 1UQ

£525 Per Week

A well presented bright one double bedroom apartment on the NINTH FLOOR (WITH LIFTS) of this refurbished smart and popular portered building only moments walk to Maida Vale underground station, easy distance to Little Venice and Warwick Avenue. This delightful property benefits from having wooden flooring, fitted modern kitchen, reception/dining room and with large picture window/door out to west facing private balcony. Large double bedroom with westerly facing windows, fitted wardrobe, ample of storage throughout. Inner hallway into bathroom/WC. Affording 24 hour porter and offered Furnished (flexible arrangement) and will be available from mid July.

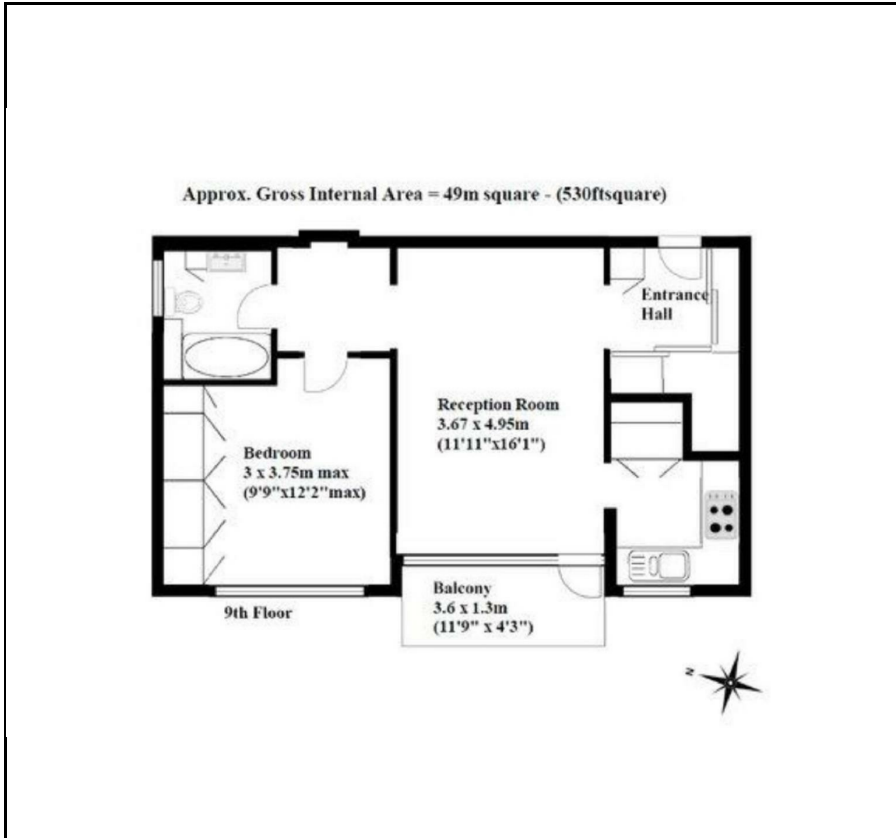
- One Double Bedroom
- Ninth Floor
- 24 Hour Porter
- Private Balcony
- Close to Maida Vale tube

Viewing

Please contact our Messila Residential Office on 020 7586 6699 if you wish to arrange a viewing appointment for this property or require further information.



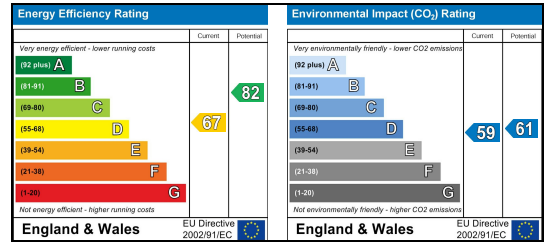
Floor Plan



Area Map



Energy Efficiency Graph



These particulars, whilst believed to be accurate are set out as a general outline only for guidance and do not constitute any part of an offer or contract. Intending purchasers should not rely on them as statements of representation of fact, but must satisfy themselves by inspection or otherwise as to their accuracy. No person in this firm's employment has the authority to make or give any representation or warranty in respect of the property.

Messila Residential

137 Park Road, London, NW8 7HT

T: 020 7586 6699 E regentspark@messilaresidential.com W: messilaresidential.com