



**Guide Price**  
**£450,000**

**Freehold**

5x  3x  2x 

**Mongeham Way, Deal,  
Kent, CT14**

*Wards*  
Helping you move forwards



## Accommodation

### GROUND FLOOR

Entrance Hallway

Cloakroom

Kitchen/Diner : 20'9 x 11'6 (6.33m x 3.51m)

Utility Area: 6'9 x 4'5 (2.06m x 1.35m)

Lounge : 20'8 x 12'2 (6.30m x 3.71m)

### FIRST FLOOR

Landing

Bedroom 1: 14'4 x 12'2 (4.37m x 3.71m)

En-suite Shower Room

Bedroom 2: 11'8 x 10'6 (3.56m x 3.20m)

En-suite Shower Room

Bedroom 3: 12'3 x 12'0 (3.74m x 3.66m)

Bathroom

### SECOND FLOOR

Landing

Bedroom 5: 9'10 x 7'8 (3.00m x 2.34m)

Bedroom 4: 12'0 x 11'8 (3.66m x 3.56m)

### OUTSIDE

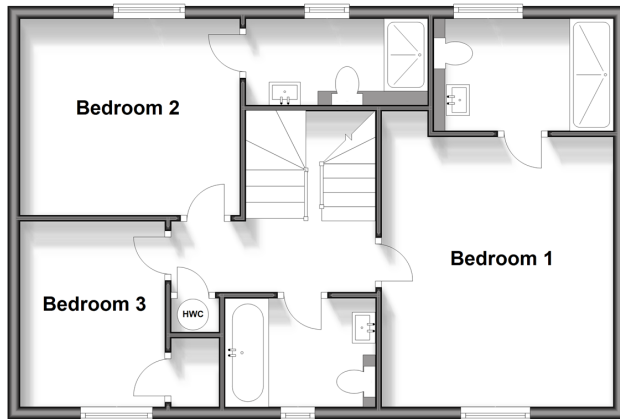
Front and Rear Gardens

Car Barn

Driveway

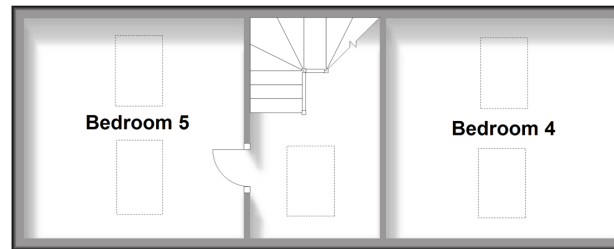
#### First Floor

Approx. 59.6 sq. metres (642.0 sq. feet)



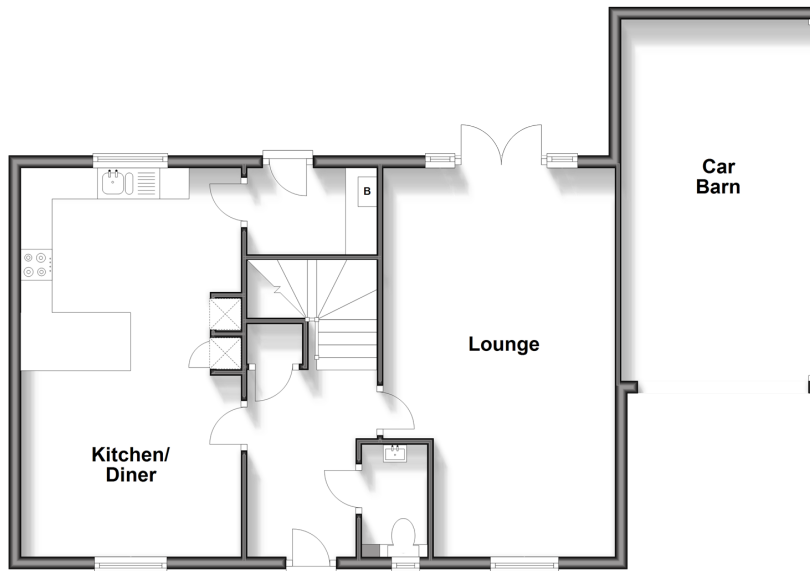
#### Second Floor

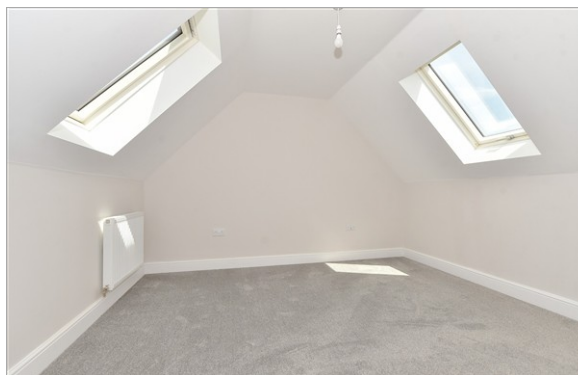
Approx. 33.8 sq. metres (363.8 sq. feet)



#### Ground Floor

Approx. 59.6 sq. metres (642.0 sq. feet)





## Main features

- Brand New Home - no chain
- Off road parking and downstairs cloakroom
- Private garden to the rear
- Versatile living space over three floors with 2 en-suites
- Situated within a modern development with Walmer station nearby



### Nearest Schools

Primary Schools: The Downs C of E Primary 0.5 miles, St Mary's Catholic Primary 0.8 miles, Deal Parochial C of E Primary 1.0 miles

Secondary Schools: Goodwin Academy 0.4 miles,



### Transport Information

Train Stations: Walmer 0.1 miles, Deal 1.6 miles, Martin Mill 2.5 miles



### Address

Mongeham Way, Deal, Kent, CT14



### Directions

For directions to this property please contact us.





Call Deal Branch 01304 361420 ■ [wardsofkent.co.uk](http://wardsofkent.co.uk)



■ Legal advice should be taken to verify fixtures/fittings, planning, alterations and/or lease details ■ Appliances & services are untested, dimensions are approximate and floor plans are not to scale



10635071/20250930/SG/WSM